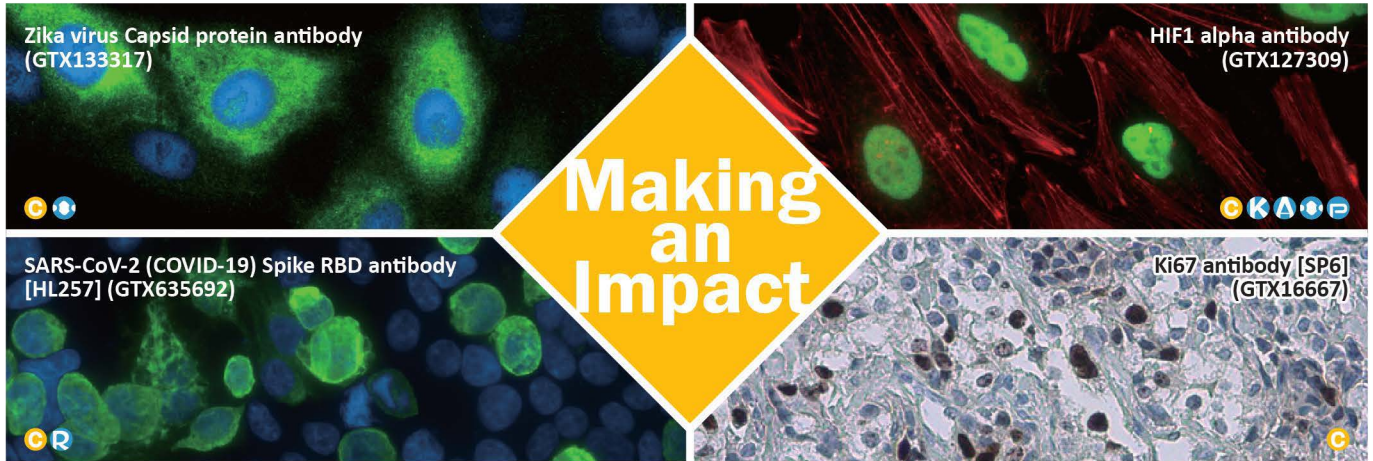


Cited Antibodies -2023 Q4

Your Expertise

Our Antibodies

Accelerated Discovery



Highlighted Publications

 Citation Support
  Recombinant
  KO/KD Validation
  Comparable Abs
  IP/MS Analysis
  Orthogonal Validation
  Protein Overexpression

Infectious Diseases

SARS-CoV / SARS-CoV-2 (COVID-19) spike antibody [1A9] (GTX632604)

Nature. 2023 Jul;619(7971):819-827.
Nat Genet. 2023 Apr;55(4):595-606.
Natl Sci Rev. 2023 Apr 14;10(5):nwac034.
Nat Microbiol. 2023 Jan;8(1):121-134.
Nat Commun. 2023 Sep 18;14(1):5666.
Sci Adv. 2023 Aug 4;9(31):eadg212.
Cell Rep Med. 2023 Aug 15;4(8):101127.
Cell Rep Med. 2023 Jun 20;4(6):101079.
Brain. 2023 Mar 1;146(3):1175-1185.
Cell Discov. 2023 Apr 11;9(1):40.

SARS-CoV-2 (COVID-19) Nucleocapsid antibody [HL344] (GTX635679)

Signal Transduct Target Ther. 2023 Feb 3;8(1):53.
Sci Transl Med. 2023 Jan 18;15(679):eabq4064.
Sci Adv. 2023 Sep 22;9(38):eadj1736.

Zika virus Envelope protein antibody (GTX133314)

Signal Transduct Target Ther. 2023 May 9;8(1):194.
Nat Commun. 2023 Sep 8;14(1):5541.
Cell Rep Med. 2023 Aug 15;4(8):101127.

Zika virus Capsid protein antibody (GTX133317)

Nat Commun. 2023 May 10;14(1):2698.

Zika virus NS3 protein antibody (GTX133309)

Signal Transduct Target Ther. 2023 May 9;8(1):194.
Nat Commun. 2023 May 10;14(1):2698.

Zika virus NS5 protein antibody (GTX133312)

Signal Transduct Target Ther. 2023 May 9;8(1):194.

Influenza A virus Nucleoprotein antibody (GTX125989)

Signal Transduct Target Ther. 2023 May 9;8(1):194.
Nat Commun. 2023 Mar 30;14(1):1763.
Nat Commun. 2023 Feb 11;14(1):787.

Influenza A virus PB2 protein antibody (GTX125926)

Nat Commun. 2023 Oct 10;14(1):6135.
Sci Adv. 2023 Jul 14;9(28):eadg5175.
Nat Commun. 2023 Feb 11;14(1):787.

Influenza A virus PB1 protein antibody (GTX125923)

Nat Commun. 2023 Oct 10;14(1):6135.
Nat Commun. 2023 Feb 11;14(1):787.

Dengue virus NS3 protein antibody (GTX124252)

Signal Transduct Target Ther. 2023 May 9;8(1):194.

Enterovirus D68 VP1 antibody (GTX132313)

Cell Rep Med. 2023 May 16;4(5):101024.

Cancer

alpha Smooth Muscle Actin antibody (GTX100034)

Nat Commun. 2023 May 13;14(1):2759.

alpha Tubulin antibody [GT114] (GTX628802)

Nat Commun. 2023 Aug 28;14(1):5241.

ATR antibody (GTX128146)

Nat Commun. 2023 Aug 17;14(1):4991.

beta Actin antibody (GTX109639)

Nat Commun. 2023 Aug 18;14(1):5016.

Caspase 3 antibody (GTX110543)

Sci Adv. 2023 Apr 14;9(15):eade3422.

CD81 antibody (GTX101766)

Sci Adv. 2023 Apr 14;9(15):eade5041.

COMMD7 antibody (GTX112076)

Cell. 2023 May 11;186(10):2219-2237.e29.

E-Cadherin antibody (GTX100443)

J Exp Clin Cancer Res. 2023 Aug 10;42(1):204.

GAPDH antibody [GT239] (GTX627408)

Nature. 2023 Oct;622(7982):359-366.

Iba1 antibody [GT10312] (GTX632426)

Sci Adv. 2023 May 12;9(19):eade3559.

Ki67 antibody [SP6] (GTX16667)

Nat Commun. 2023 Sep 6;14(1):5195.

Lamin A + C antibody (GTX101127)

Sci Adv. 2023 Apr 14;9(15):eade3422.

MAP2 antibody (GTX133109)

Nat Commun. 2023 Aug 24;14(1):5150.

MMP2 antibody (GTX104577)

Sci Adv. 2023 Apr 14;9(15):eade3422.

PCNA antibody (GTX100539)

Nat Genet. 2023 Apr;55(4):595-606.

p63 antibody [N2C1], Internal (GTX102425)

Nat Microbiol. 2023 May;8(5):875-888.

Rad51 antibody [14B4] (GTX70230)

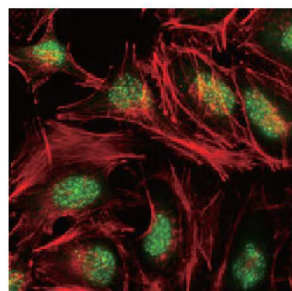
Cells. 2023 Oct 9;12(19):2420.

SLUG antibody (GTX128796)

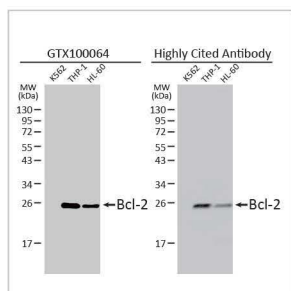
Sci Adv. 2023 Apr 14;9(15):eade3422.

Top-cited Products

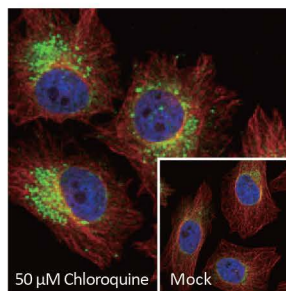
Cancer



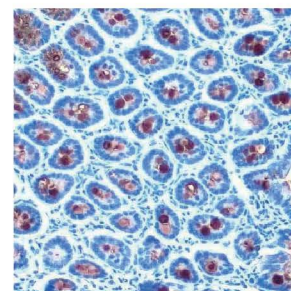
ATR (phospho Thr1989) antibody (GTX128145)



Bcl-2 antibody [N1N2], N-term (GTX100064)



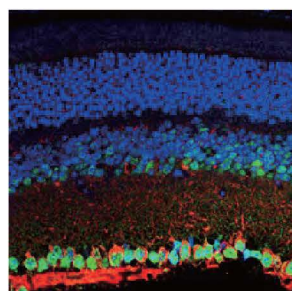
LC3B antibody (GTX127375)



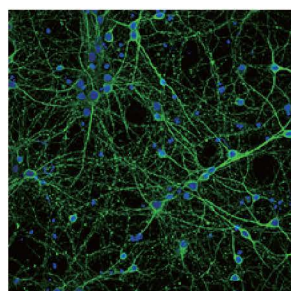
MUC2 antibody [C3], C-term (GTX100664)



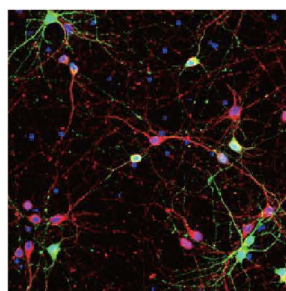
Neuroscience



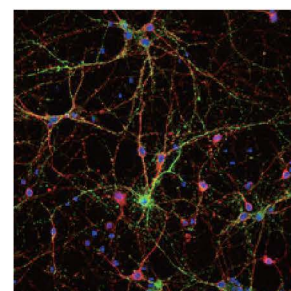
BDNF antibody (GTX132621)



beta Tubulin 3/ Tuj1 antibody (GTX130245)



GABA antibody (GTX125988)



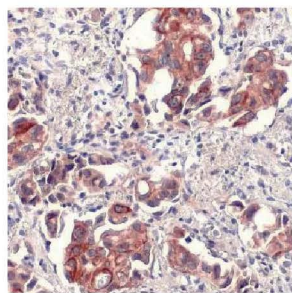
Synaptophysin antibody (GTX100865)



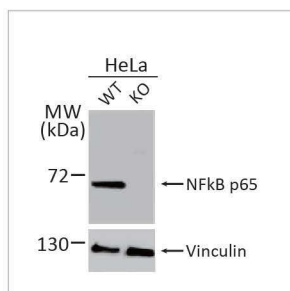
Highlighted Products

Cat. No.	Product Name	Clonality	Reactivity	Applications
GTX41980	8-Hydroxyguanosine antibody [15A3]	Ms mAb		Activation, Dot, ELISA, FACS, ICC/IF, IHC, IHC-Fr, IHC-P, IP
GTX128414	AKT (phospho Ser473) antibody	Rb pAb	Hu, Ms, Pig, Rat	ICC/IF, IHC-P, IP, WB
GTX121937	AKT antibody [N3C2], Internal	Rb pAb	Hu, Japanese Medaka, Ms, Pig, Rat	ICC/IF, IHC-Fr, IHC-P, IP, WB
GTX100034	alpha Smooth Muscle Actin antibody	Rb pAb	Hu, Ms, Rat, Zfsh	ICC/IF, IHC-Fr, IHC-P, WB
GTX112141	alpha Tubulin antibody	Rb pAb	C. elegans, Chk, Dm, Hu, Mosq, Ms, Rat, Tetrahymena	ICC/IF, IHC-Fr, IHC-P, WB
GTX109242	Arginase 1 antibody	Rb pAb	Hu, Ms, Rat	ELISA, FACS, ICC/IF, IHC-Fr, IHC-P, IP, Sandwich ELISA, WB
GTX128145	ATR (phospho Thr1989) antibody	Rb pAb	Hu, Ms	ICC/IF, IHC-P, IP, WB
GTX128146	ATR antibody	Rb pAb	Hu, Ms	ICC/IF, IHC-P, IP, WB
GTX109683	Bax antibody [N1N2], N-term	Rb pAb	Hu, Ms, Rat	ICC/IF, IHC-Fr, IHC-P, IP, WB
GTX100064	Bcl-2 antibody [N1N2], N-term	Rb pAb	Cat, Dog, Hu, Ms, Rat, Zfsh	ICC/IF, IHC-P, WB
GTX132621	BDNF antibody	Rb pAb	Hu, Ms, Rat	ICC/IF, IHC-Fr, IHC-P, WB
GTX101435	beta Catenin antibody [N1N2-2], N-term	Rb pAb	Cat, Dog, Hu, Ms, Rat, Rb, Zfsh	ChIP assay, FACS, ICC/IF, IHC, IHC-Fr, IHC-P, IHC-Wm, IP, WB
GTX130245	beta Tubulin 3/ Tuj1 antibody	Rb pAb	Hu, Ms, Rat	FACS, ICC/IF, IHC-Fr, IHC-P, IP, WB
GTX632041	C9orf72 antibody [GT779]	Ms mAb	Hu, Ms, Rat	ICC/IF, IHC-P, IP, WB
GTX110543	Caspase 3 antibody	Rb pAb	Hu, Ms, Rat	Dot, IHC-Fr, IHC-P, IP, WB
GTX26308	Collagen I antibody [COL-1]	Ms mAb	Bov, Deer, Hu, Ms, Pig, Rat, Rb	Dot, ELISA, ICC/IF, IHC, IHC-Fr, IHC-P, IP, WB
GTX37732	Collagen X antibody	Rb pAb	Hu, Ms, Rat, Rb	IHC, IHC-P, WB
GTX116011	DNMT1 antibody [N1], N-term	Rb pAb	Hu, Ms	ChIP assay, ICC/IF, IHC-P, IP, WB
GTX129125	DNMT3A antibody	Rb pAb	Hu, Ms, Rat	EM, ICC/IF, IHC-P, IP, WB
GTX100443	E-Cadherin antibody	Rb pAb	Dog, Hu, Ms, Rat, Zfsh	ICC/IF, IHC-P, IHC-Wm, IP, PLA, WB
GTX112794	Fibronectin antibody [N1N2], N-term	Rb pAb	Hu, Ms, Rat	ELISA, ICC/IF, IHC-Fr, IHC-P, IP, WB
GTX100277	FOXO3A antibody [C3], C-term	Rb pAb	Hu, Ms, Rat, Squirrel, Xenopus	ICC/IF, IHC-P, IP, WB
GTX125988	GABA antibody	Rb pAb	Dm, Hu, Ms, Rat	Dot, ICC/IF, IHC, IHC-Fr, IHC-P
GTX108711	GFAP antibody	Rb pAb	Hu, Ms, Rat	ICC/IF, IHC, IHC-Fr, IHC-P, WB
GTX109679	HDAC3 antibody [C3], C-term	Rb pAb	Dm, Hu, Ms, Rat	ChIP assay, ICC/IF, IHC-P, IP, WB
GTX101147	Heme Oxygenase 1 antibody	Rb pAb	Hu, Mk, Ms, Rat	ELISA, ICC/IF, IHC-P, Sandwich ELISA, WB
GTX127309	HIF1 alpha antibody	Rb pAb	Bov, Hu, Ms, Rat, Rb	ChIP assay, ICC/IF, IHC-Fr, IHC-P, IP, WB
GTX122148	Histone H3 antibody	Rb pAb	Dm, Fungi, Golden Syrian Hamster, Hu, Mk, Ms, Pig, Rat, Rice	ChIP assay, ICC/IF, IHC, IHC-P, IP, WB
GTX100042	Iba1 antibody	Rb pAb	Hu, Ms, Rat	FACS, ICC/IF, IHC, IHC (Free Floating), IHC-Fr, IHC-P, WB
GTX632426	Iba1 antibody [GT10312]	Ms mAb	Hu, Ms, Rat, Zfsh	FACS, ICC/IF, IHC (Free Floating), IHC-P, WB
GTX130021	IL1 beta antibody	Rb pAb	Hu	ICC/IF, WB

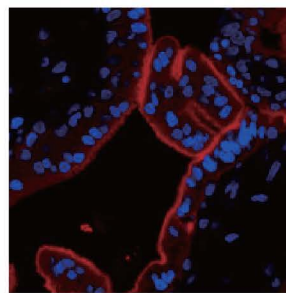
Immunology



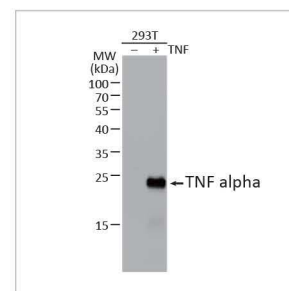
IL6 antibody (GTX110527)



NFKB p65 antibody (GTX102090)



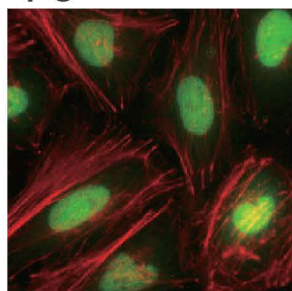
PD-L1 antibody [HL1041] (GTX635975)



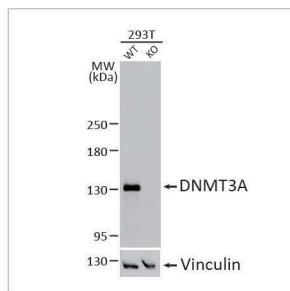
TNF alpha antibody (GTX110520)



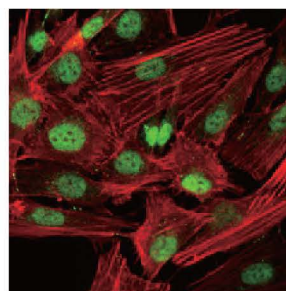
Epigenetics



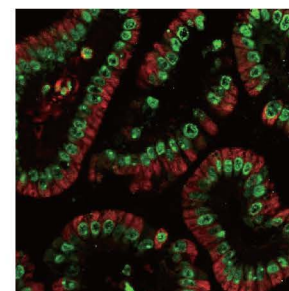
DNMT1 antibody [N1], N-term (GTX116011)



DNMT3A antibody (GTX129125)



HDAC3 antibody [C3], C-term (GTX109679)



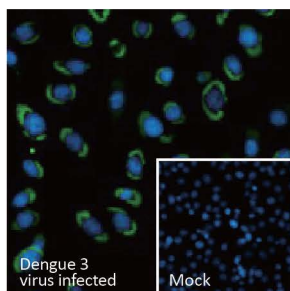
Histone H3 antibody (GTX122148)



Highlighted Products

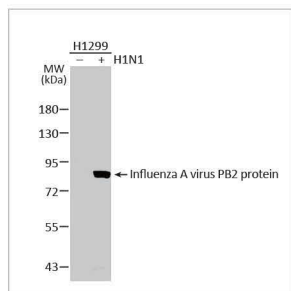
Cat. No.	Product Name	Clonality	Reactivity	Applications
GTX74034	IL1 beta antibody	Rb pAb	Hu, Ms, Rat	ELISA, ICC/IF, IHC, IHC-Fr, IHC-P, WB
GTX110527	IL6 antibody	Rb pAb	Hu, Ms, Rat	ICC/IF, IHC-Fr, IHC-P, WB
GTX130246	iNOS antibody	Rb pAb	Ms, Rat	ICC/IF, IHC-P, WB
GTX16667	Ki67 antibody [SP6]	Rb mAb	Chk, Hu, Ms, Pig, Rat	FACS, ICC/IF, IHC, IHC-Fr, IHC-P, WB
GTX127375	LC3B antibody	Rb pAb	Gpig, Hu, Mosq, Ms, Pig, Rat	FACS, ICC/IF, IHC-Fr, IHC-P, IP, WB
GTX104577	MMP2 antibody	Rb pAb	Hu, Ms, Pig, Rat	ICC/IF, IHC-Fr, IHC-P, IP, WB
GTX100458	MMP9 antibody [N2C1], Internal	Rb pAb	Bov, Hu, Ms, Rat	ICC/IF, IHC, IHC-Fr, IHC-P, IHC-Wm, WB
GTX128379	Mpx antibody	Rb pAb	Atlantic salmon, Zfish	IHC, IHC-Fr, IHC-P, IHC-Wm
GTX70212	Mre11 antibody [12D7]	Ms mAb	Hu, Rat	ELISA, Functional Assay, ICC/IF, IHC-P, IP, PLA, WB
GTX132803	mTOR (phospho Ser2448) antibody	Rb pAb	Hu, Ms, Rat	ICC/IF, IHC-P, WB
GTX100664	MUC2 antibody [C3], C-term	Rb pAb	Hu, Ms, Pig, Rat	FISH, ICC/IF, IHC, IHC-Fr, IHC-P, WB
GTX127345	N-Cadherin antibody	Rb pAb	Hu, Mk, Ms, Rat	ICC/IF, IHC-Fr, IHC-P, WB
GTX102090	NFKB p65 antibody	Rb pAb	Hu, Ms, Rat	ChIP assay, ICC/IF, IHC-Fr, IHC-P, IP, WB
GTX103322	NRF2 antibody [N2C2], Internal	Rb pAb	Allg, Bird, Hu, Ms, Plant, Rat, Zfish	ChIP assay, FACS, ICC/IF, IHC-P, IP, WB
GTX70220	Nuclear Matrix Protein p84 antibody [5E10]	Ms mAb	Hm, Hu, Mk, Ms, Rat	ChIP assay, ICC/IF, IHC, IHC-P, IP, WB
GTX101497	Oct4 antibody	Rb pAb	Hu, Ms, Rat	FACS, ICC/IF, IHC-Fr, IHC-P, IP, WB
GTX100539	PCNA antibody	Rb pAb	Dm, Golden Syrian Hamster, Hu, Ms, Rat	FISH, ICC/IF, IHC, IHC-Fr, IHC-P, IP, WB
GTX635975	PD-L1 antibody [HL1041]	Rec Rb mAb	Hu	ICC/IF, IHC-P, WB
GTX37356	PGC1 alpha antibody	Rb pAb	Hu, Ms, Rat	WB
GTX70228	Rad50 antibody [13B3]	Ms mAb	Hu, Mk, Ms, Rat	ICC/IF, IHC, IHC-P, in vitro, IP, WB
GTX70230	Rad51 antibody [14B4]	Rec Ms mAb	Chk, Hu, Ms, Rat	ICC/IF, IHC, IHC-P, IP, PLA, WB
GTX118619	RBPM5 antibody	Rb pAb	Hu, Mk, Ms, Rat	ICC/IF, IHC, IHC-Fr, IHC-P, IHC-Wm, WB
GTX128796	SLUG antibody	Rb pAb	Hu, Ms	IHC-P, WB
GTX100554	SOD1 antibody	Rb pAb	Allg, Bird, Hu, Ms, Rat	ELISA, ICC/IF, IHC-P, Sandwich ELISA, WB
GTX101507	SOX2 antibody [N1C3]	Rb pAb	Ceratotherium simum, Frg, Hu, Ms, Rat	FACS, ICC/IF, IHC-Fr, IHC-P, IP, WB
GTX100685	SQSTM1 / P62 antibody [N3C1], Internal	Rb pAb	Bov, Honeybee, Hu, Mosq, Ms, Rat, Zfish	FACS, ICC/IF, IHC-P, IP, PLA, WB
GTX100865	Synaptophysin antibody	Rb pAb	Hu, Ms, Rat	ICC/IF, IHC-Fr, IHC-P, IHC-Wm, WB
GTX21279	TGF beta antibody [TB21]	Ms mAb	Bov, Hu, Mink, Ms, Mtd, Rat, Rb, Sheep	ELISA, FACS, IHC, IHC-Fr, IHC-P, Neutralizing/Inhibition, WB
GTX110520	TNF alpha antibody	Rb pAb	Bov, Hu, Ms, Rat	ICC/IF, IHC-Fr, IHC-P, WB
GTX70255	TSG101 antibody [4A10]	Rec Ms mAb	Dog, Hm, Hu, Mk, Ms, Pig, Rat, Zfish	ELISA, EM, FACS, ICC/IF, IHC, IHC (Free Floating), IHC-P, IP, WB
GTX100619	Vimentin antibody	Rb pAb	Cat, Dog, Hu, Ms, Rat	ELISA, ICC/IF, IHC, IHC-Fr, IHC-P, IP, Sandwich ELISA, WB

Infectious Diseases



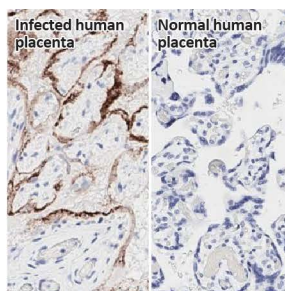
Dengue virus NS3 protein antibody (GTX124252)

C



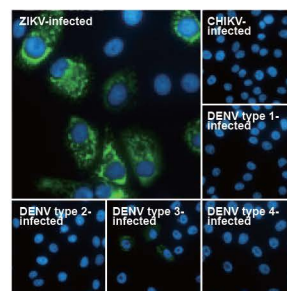
Influenza A virus PB2 protein antibody (GTX125926)

C K A



SARS-CoV-2 (COVID-19) Nucleocapsid antibody [HL344] (GTX635679)

C R C



Zika virus Envelope protein antibody (GTX133314)

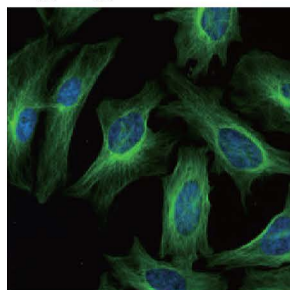
C C

Cat. No.	Product Name	Clonality	Reactivity	Applications
GTX127277	Dengue virus Envelope protein antibody	Rb pAb	DENV2	ELISA, ICC/IF, IHC-P, IHC-P (cell pellet), WB
GTX124252	Dengue virus NS3 protein antibody	Rb pAb	DENV2	FACS, ICC/IF, IHC, IHC-P, IP, WB
GTX132313	Enterovirus D68 VP1 antibody	Rb pAb	EVD68	FACS, ICC/IF, IHC-P, WB
GTX57154	Flavivirus group antibody [D1-4G2-4-15 (4G2)]	Ms mAb	Flavivirus	ELISA, FACS, ICC/IF, IHC-Fr, IHC-P, WB
GTX125989	Influenza A virus Nucleoprotein antibody	Rb pAb	Influenza A virus	ELISA, ICC/IF, IHC-P, IP, Sandwich ELISA, WB
GTX125932	Influenza A virus PA protein antibody	Rb pAb	Influenza A virus	ICC/IF, WB
GTX125923	Influenza A virus PB1 protein antibody	Rb pAb	Influenza A virus	ICC/IF, WB
GTX125926	Influenza A virus PB2 protein antibody	Rb pAb	H1N1, Influenza A virus	ICC/IF, IP, WB
GTX125867	Japanese encephalitis virus Envelope antibody	Rb pAb	JEV	ICC/IF, IHC-P, IHC-P (cell pellet), WB
GTX632604	SARS-CoV / SARS-CoV-2 (COVID-19) spike antibody [1A9]	Ms mAb	SARS-CoV, SARS-CoV-2	ELISA, EM, FACS, ICC/IF, IHC-Fr, IHC-P..... ①
GTX635679	SARS-CoV-2 (COVID-19) Nucleocapsid antibody [HL344]	Rec Rb mAb	SARS-CoV-2	ELISA, ICC/IF, IHC-Fr, IHC-P..... ②
GTX133317	Zika virus Capsid protein antibody	Rb pAb	ZIKV	ICC/IF, IHC-P (cell pellet), WB
GTX133314	Zika virus Envelope protein antibody	Rb pAb	ZIKV	ICC/IF, IHC-P, WB
GTX133307	Zika virus NS1 protein antibody	Rb pAb	ZIKV	ELISA, ICC/IF, Sandwich ELISA, WB
GTX133305	Zika virus prM protein antibody	Rb pAb	ZIKV	ICC/IF, IP, WB

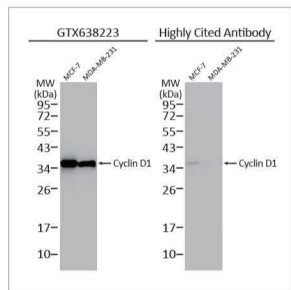
① ELISA, EM, FACS, ICC/IF, IHC-Fr, IHC-P, IHC-P (cell pellet), IP, Neutralizing/Inhibition, Sandwich ELISA, WB

② ELISA, ICC/IF, IHC-Fr, IHC-P, IHC-P (cell pellet), Sandwich ELISA, WB

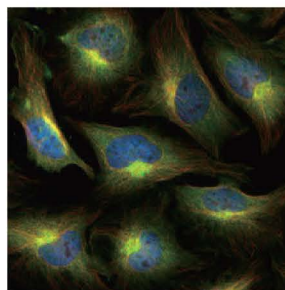
Highlighted Recombinant Rabbit Monoclonal Antibodies



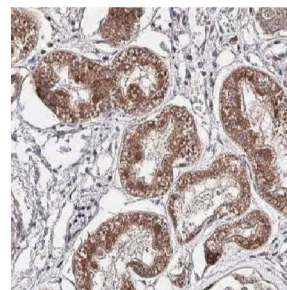
alpha Tubulin antibody [HL2162] (GTX638140)



Cyclin D1 antibody [HL2219] (GTX638223)



mTOR antibody [HL2216] (GTX638220)



VEGFA antibody [HL1755] (GTX637405)

Cat. No.	Product Name	Clonality	Reactivity	Applications
GTX638140	alpha Tubulin antibody [HL2162]	Rec Rb mAb	Hu, Ms, Rat	ICC/IF, IHC-P, WB
GTX638219	Angiogenin antibody [HL2215]	Rec Rb mAb	Hu, Rat	ICC/IF, IHC-P, WB
GTX638316	COX4 antibody [HL2264]	Rec Rb mAb	Hu, Ms, Rat, Zfish	ICC/IF, IHC-P, WB
GTX638223	Cyclin D1 antibody [HL2219]	Rec Rb mAb	Dog, Hu, Ms, Rat	IHC-P, WB
GTX638311	ETS2 antibody [HL2259]	Rec Rb mAb	Hu, Ms	ICC/IF, WB
GTX638268	FN3K antibody [HL2223]	Rec Rb mAb	Hu, Ms, Rat	IHC-P, WB
GTX638303	G3BP1 antibody [HL2254]	Rec Rb mAb	Hu, Ms, Rat	ICC/IF, IHC-P, WB
GTX638321	KLF5 antibody [HL2269]	Rec Rb mAb	Hu, Ms, Rat	IHC-P, WB
GTX638220	mTOR antibody [HL2216]	Rec Rb mAb	Hu, Ms, Rat	ICC/IF, IHC-P, WB
GTX638222	PAI2 antibody [HL2218]	Rec Rb mAb	Hu, Ms	IHC-P, WB
GTX638271	PKC gamma antibody [HL2226]	Rec Rb mAb	Hu, Ms, Rat	IHC-P, WB
GTX638322	PSAT1 antibody [HL2270]	Rec Rb mAb	Hu, Ms, Rat	IHC-P, WB
GTX638267	RelB antibody [HL2222]	Rec Rb mAb	Hu, Ms, Rat	IHC-P, WB
GTX638215	RUNX1 antibody [HL2211]	Rec Rb mAb	Hu, Ms, Rat	ICC/IF, IHC-P, WB
GTX638273	S100 beta antibody [HL2228]	Rec Rb mAb	Hu, Ms, Rat	IHC-P, WB
GTX638275	SIGMAR1 antibody [HL2230]	Rec Rb mAb	Hu, Ms, Rat	IHC-P, WB
GTX638277	SLC27A2 antibody [HL2232]	Rec Rb mAb	Hu, Ms, Rat	IHC-P, WB
GTX638332	TMPPRS2 antibody [HL2279]	Rec Rb mAb	Hu, Ms, Rat	IHC-P, WB
GTX637405	VEGFA antibody [HL1755]	Rec Rb mAb	Cat, Dog, Hu, Ms	ICC/IF, IHC-P, WB
GTX638294	ZEB1 antibody [HL2245]	Rec Rb mAb	Hu, Ms, Rat	ICC/IF, IHC-P, WB