

Monoamine degradation pathway

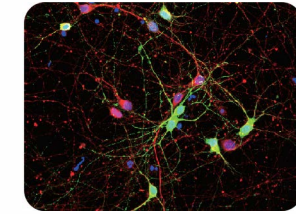
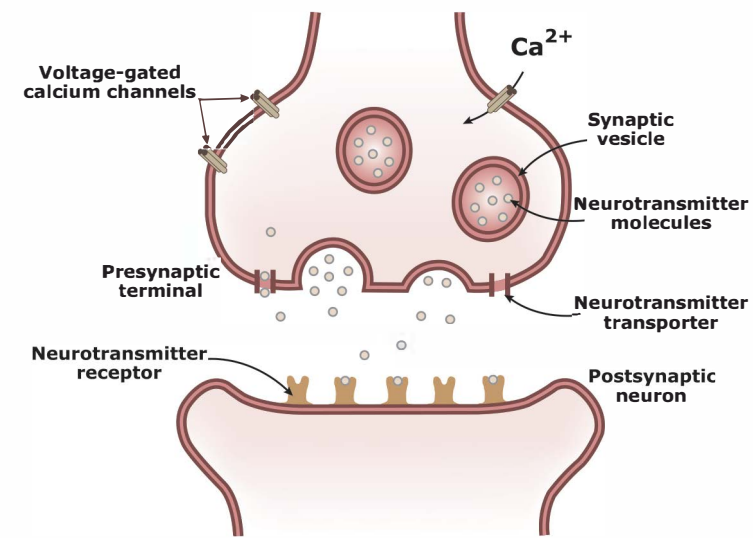
Cat. No.	Product Name	Host & Clonality	Reactivity	Application
GTX101289	Monoamine Oxidase A antibody [N2C3]	Rb pAb	Hu, Ms	IHC-P, WB
GTX105970	Monoamine Oxidase B antibody [N2C3]	Rb pAb	Hu, Ms	ELISA, ICC/IF, IHC-P, WB
GTX113771	Monoamine Oxidase B antibody [N1N3]	Rb pAb	Hu, Rat	ICC/IF, IHC-P, WB
GTX101233	COMT antibody	Rb pAb	Hu, Ms	ELISA, IHC-P, WB
GTX114062	COMT antibody	Rb pAb	Hu, Rat	IHC-P, WB

Glutamate

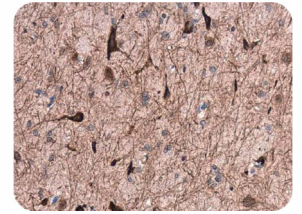
Citation Support KO/KD Validated

	Cat. No.	Product Name	Host & Clonality	Reactivity	Application
Glutamate	GTX12437	L. Glutamate antibody [GT9019]	Ms mAb	Other	ELISA, ICC/IF, IHC
	GTX12497	L. Glutamate antibody	Rb pAb	Other	ELISA, ICC/IF, IHC
AMPA receptor	GTX31031	GluR1 antibody	Rb pAb	Hu, Ms, Mk, Rat	ICC/IF, IHC, IHC-P, WB
	GTX40961	GluR1 (phospho Ser831) antibody	Rb pAb	Rat	WB
	GTX50729	GluR1 (phospho Ser836) antibody	Rb pAb	Hu, Ms, Rat	WB
	GTX30221	GluR1 (phospho Ser845) antibody	Rb pAb	Rat	ICC/IF, IHC, WB
	GTX60613	GluR2 antibody [7G6]	Ms mAb	Hu	ELISA, FACS, WB
	GTX54971	GluR2 (phospho Ser880) antibody	Rb pAb	Hu, Ms, Rat	IHC-P, WB
	GTX32626	GluR3 antibody	Rb pAb	Hu, Ms, Rat	ICC/IF, IHC-P, WB
	GTX31032	GluR4 antibody	Rb pAb	Hu, Ms, Rat	IHC, IHC-P, WB
	GTX32189	GluR4 (phospho Ser862) antibody	Rb pAb	Hu, Ms, Rat	WB
	GTX31033	GluR5/GRIK1 antibody	Rb pAb	Hu, Ms, Rat	ELISA, IHC, IHC-P, WB
Kainate receptor	GTX55640	GluR6 antibody	Rb pAb	Hu, Ms, Rat	ICC/IF, IHC-P, WB
	GTX108489	GluR7 antibody [C3], C-term	Rb pAb	Hu	WB
	GTX31035	GluR7 antibody	Rb pAb	Hu, Ms, Rat	ELISA, IHC-P, WB
	GTX85044	KA1/GRIK4 antibody	Rb pAb	Hu, Ms, Rat	ELISA, ICC/IF, IHC-P, WB
	GTX85043	KA2/GRIK5 antibody	Rb pAb	Hu, Ms, Rat	ELISA, ICC/IF, IHC-P, WB
Metabotropic receptor	GTX37416	mGluR1 antibody	Rb pAb	Hu, Ms, Rat	ELISA, IHC-P, WB
	GTX31057	mGluR2 antibody	Rb pAb	Hu	ICC/IF, IHC, IHC-Fr, IHC-P, WB
	GTX31056	mGluR2/3 antibody	Rb pAb	Hu, Ms, Rat	ELISA, IHC, IHC-P, WB
	GTX54120	mGluR3 antibody	Rb pAb	Hu, Ms	ICC/IF, IHC-P, WB
	GTX55859	mGluR4 antibody	Rb pAb	Hu, Ms, Chk, Mk, Rat	ICC/IF, IHC, IHC-P, WB
	GTX133288	mGluR5 antibody	Rb pAb	Ms, Rat	WB
	GTX108234	mGluR6 antibody	Rb pAb	Hu	ICC/IF, IHC-P, WB
	GTX31060	mGluR7 antibody	Gt pAb	Hu	WB
NMDA receptor	GTX82651	mGluR7 (phospho Ser862) antibody	Rb pAb	Ms, Rat	WB
	GTX31061	mGluR8 antibody	Rb pAb	Hu, Ms, Rat	ELISA, IHC, IHC-P, WB
	GTX133097	NMDAR1 antibody	Rb pAb	Ms, Rat	ICC/IF, IHC-Fr, IHC-P, WB
	GTX31090	NMDAR1 (phospho Ser897) antibody	Rb pAb	Hu, Ms, Rat	IHC, IHC-P
	GTX103558	NMDAR2A antibody	Rb pAb	Hu, Ms, Rat	ICC/IF, IHC-P, WB
	GTX133099	NMDAR2B antibody	Rb pAb	Ms, Rat	ICC/IF, WB
	GTX109713	NMDAR2B antibody [C2C3], C-term	Rb pAb	Hu, Ms, Rat	ICC/IF, WB
	GTX130183	NMDAR2B (phospho Tyr1472) antibody	Rb pAb	Ms, Rat	WB
	GTX82629	NMDAR2C antibody	Rb pAb	Hu, Ms, Rat	IHC, IP, WB
	GTX37591	NMDAR2D antibody	Rb pAb	Hu, Ms, Rat	ELISA, IHC-P, WB
Transporter	GTX22639	NMDAR3A + NMDAR3B antibody	Ms mAb	Hu	WB
	GTX53549	NMDAR3B antibody	Rb pAb	Hu	IHC-P, WB
	GTX133148	VGLUT1 antibody	Rb pAb	Ms, Rat	ICC/IF, IHC-Fr, IHC-P, WB
	GTX133142	VGLUT2 antibody	Rb pAb	Ms, Rat	WB
Synthesis	GTX54872	VGLUT3 antibody	Rb pAb	Ms, Rat	IHC-Fr, WB
	GTX30043	ALDH4A1 antibody	Rb pAb	Hu, Ms, Rat	ICC/IF, IHC-P, WB
	GTX114982	Glutaminase antibody [C1C3]	Rb pAb	Ms	WB
	GTX81012	GLS antibody, C-term	Rb pAb	Hu, Ms	FACS, ICC/IF, IHC-P, WB
	GTX133242	GLS2 antibody	Rb pAb	Ms, Rat	WB
	GTX131263	Glutaminase C antibody	Rb pAb	Hu, Ms	ICC/IF, IHC-P, IP, WB
	GTX632317	Glutaminase C antibody [GT3211]	Ms mAb	Hu, Ms	ICC/IF, IHC-P, WB
	GTX131259	Glutaminase isoform 2 specific antibody	Rb pAb	Hu	IP, WB
	GTX105765	Glutamate Dehydrogenase antibody	Rb pAb	Hu, Ms, Rat	ELISA, ICC/IF, IHC-P, WB
	GTX112361	Glutamate Dehydrogenase 1+2 antibody	Rb pAb	Hu, Ms, Rat	ICC/IF, IHC-P, WB
	GTX88164	Glutamate Dehydrogenase antibody, Internal	Gt pAb	Hu, Ms	ICC/IF, IHC, IHC-P, WB
GTX112952	GPT antibody [N2C2], Internal	Rb pAb	Hu, Ms	IHC-P, WB	

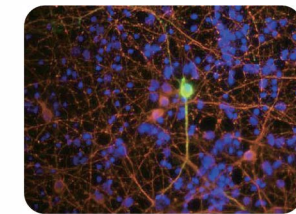
Neurotransmission



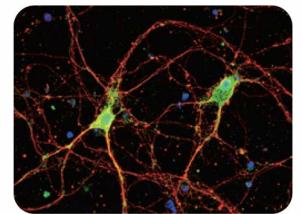
GABA antibody [GTX125988]



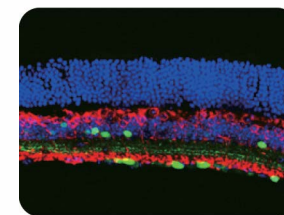
GABA A Receptor alpha 1 antibody [N1C1] (GTX104027)



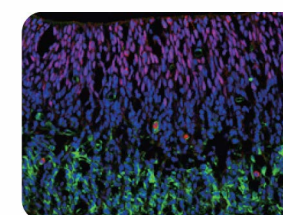
Serotonin antibody [5-HT-H209] (GTX31099)



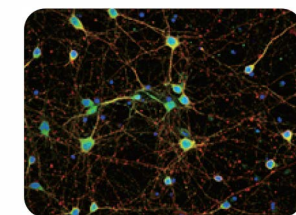
5-HT1B receptor antibody [C1C3] (GTX100009)



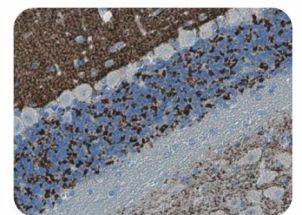
ChAT antibody [N1N3] (GTX113164)



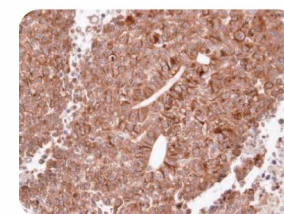
Tyrosine Hydroxylase antibody [N1C1] (GTX102424)



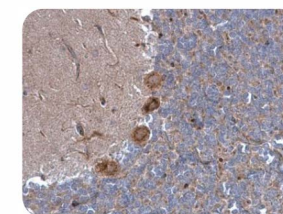
NMDAR1 antibody (GTX133097)



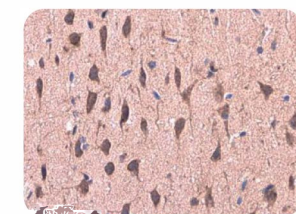
VGLUT1 antibody (GTX133148)



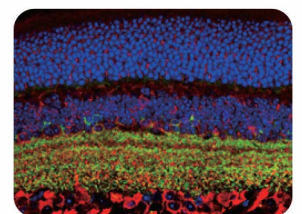
Histamine H2 Receptor (GTX108152)



alpha 1a Adrenergic Receptor antibody (GTX100190)



COMT antibody (GTX114062)



GAD65 antibody (GTX133156)

Dopamine

Citation Support

	Cat. No.	Product Name	Host & Clonality	Reactivity	Application
Dopamine	GTX21001	Dopamine antibody	Ms mAb	Other	Blocking, IHC-Fr, IHC-P
	GTX12511	Dopamine antibody	Rb pAb	Other	ELISA, ICC/IF, IHC
Receptor	GTX100354	Dopamine Receptor D1 antibody [C2C3], C-term	Rb pAb	Hu, Ms, Rat	IHC-Fr, IHC-P, WB
	GTX71747	Dopamine receptor D2 antibody	Rb pAb	Hu	IHC-P
	GTX30996	Dopamine receptor D3 antibody	Rb pAb	Hu	IHC-P
	GTX108178	Dopamine Receptor D4 antibody [N1], N-term	Rb pAb	Hu, Ms	IHC-Fr, WB
	GTX132084	Dopamine Receptor D4 antibody	Rb pAb	Hu	WB
	GTX77969	Dopamine receptor D5 antibody	Rb pAb	Hu, Ms	IHC-Fr, IHC-P, WB
Transporter	GTX133152	Dopamine Transporter antibody	Rb pAb	Ms	WB
	GTX30998	Dopamine Transporter antibody, C-Term	Rb pAb	Hu, Ms, NHuPrm	IHC, WB
Synthesis	GTX30448	DOPA Decarboxylase antibody	Rb pAb	Ms, Rat	ICC/IF, IHC, IHC-Fr, WB
	GTX113016	Tyrosine Hydroxylase antibody	Rb pAb	Hu, Ms, Rat, Vole	ICC/IF, IHC-Fr, IHC-P, WB
	GTX102424	Tyrosine Hydroxylase antibody [N1C1]	Rb pAb	Hu, Ms, Rat	ICC/IF, IHC-Fr, IHC-P, WB, IHC-Wm
	GTX10372	Tyrosine Hydroxylase antibody [185]	Ms mAb	Hu, Ms, Rat	ICC/IF, IHC-Fr, IHC-P, WB
	GTX16557	Tyrosine Hydroxylase (phospho Ser40) antibody	Rb pAb	Hu, Ms, Mk, Pig, Rat, Bird, QI	ICC/IF, IHC, IHC-Fr, WB
	GTX56286	Cytochrome P4502D6 antibody	Rb pAb	Hu, Ms, Mk, Rat	WB

Histamine



	Cat. No.	Product Name	Host & Clonality	Reactivity	Application
Histamine	GTX12894	Histamine antibody [GT9016]	Ms mAb	Other	ELISA, IHC
	⊕ GTX102924	Histamine H1 Receptor/HRH1 antibody	Rb pAb	Hu	IHC-P, WB
	⊕ GTX108152	Histamine H2 Receptor antibody [N1], N-term	Rb pAb	Hu, Rat	FACS, ICC/IF, IHC, IHC-P, WB
Receptor	⊕ GTX100187	Histamine H3 Receptor antibody	Rb pAb	Hu	IHC-P, WB
	⊕ GTX100387	Histamine H4 Receptor antibody [N1N2], N-term	Rb pAb	Hu	WB
	⊕ GTX130116	Histamine H4 Receptor antibody	Rb pAb	Hu	WB
Synthesis	GTX112435	HDC antibody [N3C2], Internal	Rb pAb	Hu	WB
	GTX32647	HDC antibody	Rb pAb	Hu, Ms, Rat	IHC-P, WB

Norepinephrine / Epinephrine (NE / Epi)



	Cat. No.	Product Name	Host & Clonality	Reactivity	Application
NE/Epi	GTX13211	Adrenaline antibody	Rb pAb	Other	ELISA
Receptor	GTX100190	alpha 1a Adrenergic Receptor antibody	Rb pAb	Hu, Ms, Rat	ICC/IF, IHC-P, WB
	GTX100177	alpha 1b Adrenergic Receptor antibody	Rb pAb	Ms	WB
	GTX80804	alpha 2a Adrenergic Receptor antibody	Rb pAb	Hu, Ms, Rat	ICC/IF, IHC-Fr
	GTX81169	alpha 2b Adrenergic receptor antibody, Internal	Rb pAb	Hu	FACS, ICC/IF, IHC-P, WB
	GTX100334	alpha 2c Adrenergic Receptor antibody [C2C3], C-term	Rb pAb	Hu	IHC-P, WB
	GTX108366	beta 1 Adrenergic Receptor antibody [C3], C-term	Rb pAb	Hu	ICC/IF, IHC-P, WB
	⊕ GTX23546	beta 1 Adrenergic Receptor antibody	Rb pAb	Hu, Ms, Rat, Cat, NHuPm	ICC/IF, IHC, IP, WB
	⊕ GTX100040	beta 2 Adrenergic Receptor antibody [C2C3], C-term	Rb pAb	Hu, Rat	IHC-P, WB
	GTX54925	beta 3 Adrenergic Receptor antibody	Rb pAb	Hu, Ms, Rat	WB
	Transporter	GTX82626	Norepinephrine Transporter antibody [NET-05]	Ms mAb	Ms, Rat
GTX83635		VMAT2 antibody [9E11]	Ms mAb	Hu, Dog, Mk, Rat	FACS, ICC/IF, IHC, IHC-P, WB
Synthesis	GTX101616	Dopamine beta Hydroxylase antibody	Rb pAb	Hu, Ms, Rat	IHC-P, WB
	GTX114098	PNMT antibody [N2C3]	Rb pAb	Hu	IHC-P, WB

Serotonin (5-HT)



	Cat. No.	Product Name	Host & Clonality	Reactivity	Application
Serotonin (5-HT)	⊕ GTX31099	Serotonin antibody [5-HT-H209]	Ms mAb	Hu, Ms, Gpig	ICC/IF, IHC-Fr, IHC-P
	GTX12454	Serotonin antibody	Rb pAb	Other	ELISA, ICC/IF, IHC
Receptor	⊕ GTX104703	5-HT1A receptor antibody [N3C1], Internal	Rb pAb	Hu, Ms, Rat	ICC/IF, IHC-P, WB
	⊕ GTX100009	5-HT1B receptor antibody [C1C3]	Rb pAb	Hu, Rat	ICC/IF, WB
	GTX100321	5-HT1F receptor antibody [C2C3], C-term	Rb pAb	Hu	IHC-P, WB
	⊕ GTX37799	5-HT2A receptor antibody	Rb pAb	Hu, Ms, Rat	ELISA, IHC-P, WB
	⊕ GTX70503	5-HT2B receptor antibody	Rb pAb	Hu, Rat	IHC, IHC-P, WB
	GTX100329	5-HT2C receptor antibody	Rb pAb	Hu, Ms, Rat	IHC-P, WB
	⊕ GTX13897	5-HT3A receptor antibody	Rb pAb	Hu, Ms, Rat	IHC-P, WB
	GTX131835	5-HT4 receptor antibody	Rb pAb	Ms	WB
	⊕ GTX34002	5-HT6 receptor antibody	Rb pAb	Hu, Ms, Rat	ELISA, WB
	GTX108157	5-HT7 receptor antibody [N1], N-term	Rb pAb	Hu	ICC/IF, WB
Transporter	GTX133101	Serotonin Transporter antibody	Rb pAb	Rat	WB
	GTX31103	Serotonin Transporter antibody, Internal	Gt pAb	Hu, Rat	ICC/IF, WB
Synthesis	GTX109027	TPH1 antibody	Rb pAb	Hu	ICC/IF, WB
	GTX101962	TPH2 antibody [N3C3]	Rb pAb	Hu, Ms	WB

Trace amines

	Cat. No.	Product Name	Host & Clonality	Reactivity	Application
Trace amines	GTX12562	Octopamine antibody	Rb pAb	Other	ELISA, ICC/IF
	GTX12572	Tyramine antibody	Rb pAb	Other	ELISA, ICC/IF
	GTX12455	Tryptamine antibody	Rb pAb	Other	ELISA, ICC/IF, IHC
Receptor	GTX70597	Trace Amine receptor 1 antibody	Rb pAb	HuHu	IHC-P
	GTX71785	Trace Amine receptor 3 antibody	Rb pAb	Hu	IHC, IHC-P
	GTX70803	Trace Amine receptor 4 antibody	Rb pAb	Hu, Ms	IHC, IHC-P
	GTX108240	Trace Amine receptor 5/TAAR5 antibody [C2C3], C-term	Rb pAb	Hu	ICC/IF, WB
	GTX71819	GPCR GPR58 antibody	Rb pAb	Hu	IHC, IHC-P
GTX13281	GPCR GPR102 antibody	Rb pAb		IHC-P	

γ-aminobutyric acid (GABA)



	Cat. No.	Product Name	Host & Clonality	Reactivity	Application
GABA	GTX125988	GABA antibody	Rb pAb	Hu, Ms, Rat	Dot, ICC/IF, IHC-Fr, IHC-P
Receptor	GTX133261	GABA A Receptor alpha 1 antibody	Rb pAb	Ms, Rat	WB
	GTX104027	GABA A Receptor alpha 1 antibody [N1C1]	Rb pAb	Hu, Rat	IHC-P, WB
	⊕ GTX82689	GABA A Receptor alpha 2 antibody	Rb pAb	Ms, Rat	WB
	GTX105282	GABA A Receptor alpha 2 antibody [N1C2]	Rb pAb	Hu, Rat	WB
	⊕ GTX31001	GABA A Receptor alpha 3 antibody	Rb pAb	Ms, Rat	WB
	GTX80430	GABA A Receptor alpha 4 antibody, Internal	Rb pAb	Hu	FACS, IHC-P, WB
	GTX118345	GABA A Receptor alpha 5 antibody [N2C2], Internal	Rb pAb	Hu, Ms	IHC-P, WB
	GTX31006	GABA A Receptor beta 1 antibody	Rb pAb	Hu, Ms, Rat	ELISA, IHC, IHC-P
	GTX54094	GABA A Receptor beta 2 antibody	Rb pAb	Hu, Ms	IHC-P, WB
	⊕ GTX31009	GABA A Receptor beta 3 antibody	Rb pAb	Hu, Rat, Bov	IHC-Fr, WB
	⊕ GTX82680	GABA A Receptor beta 3 (phospho Ser408/409) antibody	Rb pAb	Rat	WB
	GTX31013	GABA A Receptor gamma 2 antibody	Rb pAb	Hu, Ms, Rat, Bov	IP, WB
	GTX13861	GABA A Receptor gamma 3 antibody	Rb pAb	Hu, Ms, Rat	WB
	GTX80429	GABA A Receptor delta antibody, Internal	Rb pAb	Hu	FACS, IHC-P, WB
	GTX102511	GABA B Receptor 1 antibody [N2C1], Internal	Rb pAb	Hu, Ms, Rat	ICC/IF, IHC-P, WB
	GTX133165	GABA B Receptor 1 antibody	Rb pAb	Ms, Rat	WB
	GTX105986	GABA B Receptor 2 antibody [N2C1], Internal	Rb pAb	Hu, Rat	IHC-Fr, WB
	Synthesis	GTX100281	GAD65 antibody [C2C3], C-term	Rb pAb	Hu, Ms, Rat
GTX133156		GAD65 antibody	Rb pAb	Hu, Ms, Rat	IHC-P, WB
⊕ GTX101881		GAD67 antibody	Rb pAb	Hu, Ms, Rat	ICC/IF, IHC-Fr, IHC-P, WB
GTX633816		GAD67 antibody [GT1982]	Ms mAb	Ms	WB

Glycine



	Cat. No.	Product Name	Host & Clonality	Reactivity	Application
Glycine	GTX12433	Glycine antibody	Rb pAb	Other	Dot, ELISA, ICC/IF, IHC
Receptor	GTX106112	Glycine Receptor alpha 1 antibody [N1C1]	Rb pAb	Hu	IHC-P, WB
	⊕ GTX105634	Glycine Receptor alpha 2 antibody	Rb pAb	Hu, Ms	IHC-Fr, IHC-P, WB
	GTX108513	Glycine Receptor alpha 3 antibody	Rb pAb	Hu	WB
Synthesis & Degradation	GTX81751	AMT antibody, N-term	Rb pAb	Hu	FACS, IHC-P, WB
	GTX101245	DLD antibody	Rb pAb	Hu, Ms, Rat	ICC/IF, IHC-P, WB
	GTX110267	Glycine dehydrogenase antibody [N3C2-2], Internal	Rb pAb	Hu, Ms, Rat	ICC/IF, IHC-P, IP, WB
	GTX103195	SHMT1 antibody	Rb pAb	Hu	WB
⊕ GTX125939	SHMT2 antibody	Rb pAb	Hu	ICC/IF, IHC-P, WB	

Acetylcholine (ACh)



	Cat. No.	Product Name	Host & Clonality	Reactivity	Application
Acetylcholine	GTX12585	Acetylcholine antibody [GT9014]	Ms mAb	Other	ELISA, ICC/IF
Nicotinic Receptor (nAChR)	GTX22804	AChR antibody [88B]	Ms mAb	Hu, Ms, Chk, Rat, Amph, Fsh, Rb, Vt, Torpedo	ELISA, ICC/IF, IHC, IHC-F, IHC-Fr, IP, WB
	GTX32423	AChR alpha 1 antibody	Rb pAb	Hu, Ms, Rat	ICC/IF, IHC-P, WB
	GTX105495	AChR alpha 3 antibody	Rb pAb	Hu	ICC/IF, WB
	⊕ GTX113653	AChR alpha 4 antibody [N1C1]	Rb pAb	Hu, Hm	IHC-P, WB
	GTX55490	AChR alpha 5 antibody	Rb pAb	Hu, Ms, Rat	IHC-P, WB
	GTX32988	AChR beta 1 antibody	Rb pAb	Hu, Ms, Rat	IHC, IHC-P, WB
	⊕ GTX113654	AChR beta 2 antibody [N1C1]	Rb pAb	Ms, Rat	IHC-P, WB
	GTX88687	AChR beta 3 antibody, Internal	Gt pAb	Hu	WB
	GTX31080	AChR beta 4 antibody	Rb pAb	Hu	IHC, WB
	GTX118362	AChR gamma antibody	Rb pAb	Hu	WB
	GTX77688	AChR epsilon antibody, N-term	Rb pAb	Hu	WB
Muscarinic Receptor (mAChR)	⊕ GTX31062	mAChR M1 antibody, C-term	Gt pAb	Hu	WB
	⊕ GTX22805	mAChR M2 antibody [31-1D1]	Ms mAb	Hu, Ms, Pig, Rat	ELISA, FACS, ICC/IF, IHC-P, IP, WB
	⊕ GTX111637	mAChR M3 antibody	Rb pAb	Hu	ICC/IF, WB
Transporter	GTX71305	mAChR M4 antibody	Rb pAb	Hu	IHC, IHC-P
	GTX53955	mAChR M5 antibody	Rb pAb	Hu, Ms, Rb	ICC/IF, IHC-P, WB
Synthesis & Degradation	GTX133251	Vesicular Acetylcholine Transporter antibody	Rb pAb	Ms	WB
GTX113164	Choline Acetyltransferase antibody [N1N3]	Rb pAb	Hu, Ms, Rat	ICC/IF, IHC-Fr, IHC-P, WB	
GTX101648	AChE antibody	Rb pAb	Hu, Ms, Rat	ICC/IF, IHC-Fr, IHC-P, WB	