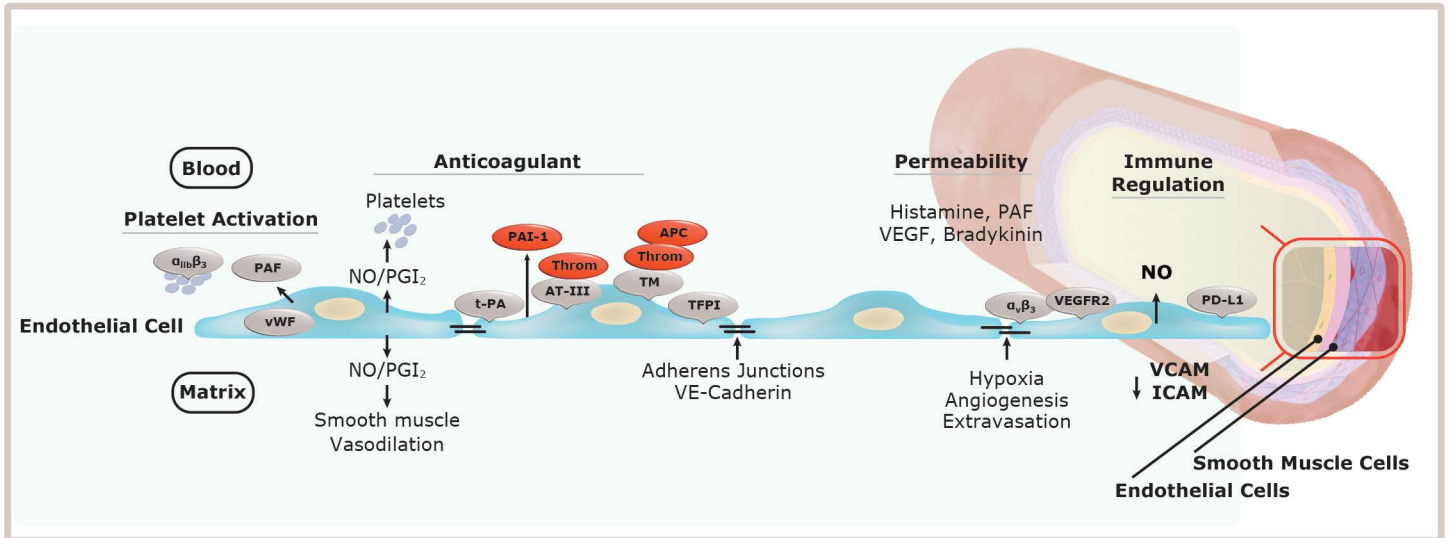


Endothelial Cell Markers

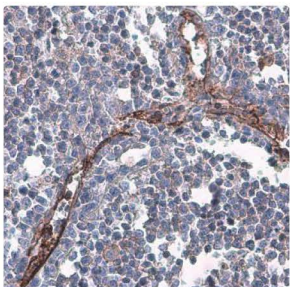
- Your Expertise
- Our Antibodies
- Accelerated Discovery

www.genetex.com

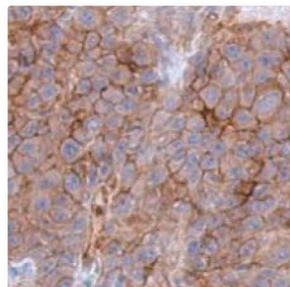


Endothelial Cell Markers

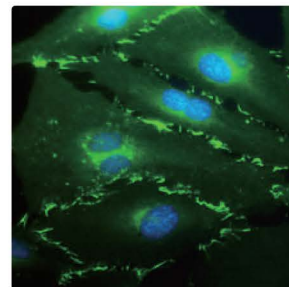
Citation Support KO/KD Validated



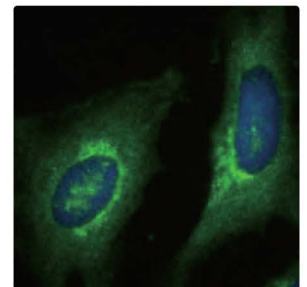
CD31 antibody [N3C2]
Internal (GTX110602)



CD146 antibody [C1C3]
(GTX108777)



VE-cadherin antibody
[GT1369] (GTX633705)



eNOS (phospho Ser1177)
antibody (GTX129058)

Highlighted Products

Citation Support

Cat. No.	Product Name	Clonality	Reactivity	Application
GTX632645	CD31 antibody [GT0010]	Hm mAb	Ms, Rat	FACS, IHC-P
GTX110602	CD31 antibody [N3C2], Internal	Rb pAb	Hu	IHC-P, WB
GTX28158	CD34 antibody [MEC14.7]	Rat mAb	Hu, Ms, Rb	ELISA, FACS, ICC/IF, IHC, IHC-Fr, IHC-P, IP, WB
GTX129843	eNOS antibody	Rb pAb	Hu	ICC/IF, WB
GTX78387	ICAM1 / CD54 antibody [1H4]	Ms mAb	Hu	FACS, ICC/IF, IHC-Fr, IHC-P, WB
GTX107505	TIE2 antibody	Rb pAb	Hu	IHC-P, WB
GTX110684	VCAM1 / CD106 antibody [N1N2], N-term	Rb pAb	Hu	IHC-P, WB
GTX633705	VE-Cadherin antibody [GT1369]	Ms mAb	Hu	ICC/IF, WB
GTX129943	VEGF Receptor 2/KDR antibody	Rb pAb	Hu	WB
GTX26994	VWF antibody	Rb pAb	Hu	IHC-P, WB

Highlighted Products



Cat. No.	Product Name	Clonality	Reactivity	Application
GTX11738	ACE antibody [9B9]	Ms mAb	Hu, Mk, Rat, Cat, Hm	ELISA, FACS, IHC-Fr, IP
GTX78404	CD105 antibody [MEM-229]	Ms mAb	Hu, Pig	FACS, ICC/IF, WB
GTX79974	CD105 antibody [MEM-229] (FITC)	Ms mAb	Hu, Pig	FACS, ICC/IF, WB
GTX79975	CD105 antibody [MEM-229] (PE)	Ms mAb	Hu, Pig	FACS, ICC/IF, WB
GTX100508	CD105 antibody [N3C3]	Rb pAb	Hu	IHC-P, WB
GTX60775	CD146 antibody [6C3E6]	Ms mAb	Hu	ELISA, FACS, IHC, IHC-P, WB
GTX108777	CD146 antibody [C1C3]	Rb pAb	Hu, Ms, Rat	ICC/IF, IHC-P, WB
GTX42394	CD151 antibody [11G5a]	Ms mAb	Hu	ELISA, FACS, IHC-Fr, IHC-P, IP, WB
GTX75455	CD151 antibody [11G5a] (FITC)	Ms mAb	Hu	FACS, ICC/IF
GTX110602	CD31 antibody [N3C2], Internal	Rb pAb	Hu	IHC-P, WB
GTX20218	CD31 antibody [WM59]	Ms mAb	Hu, Ms, Chk, RMK, CIMK	FACS, ICC/IF, IHC, IHC-P, IP
GTX75411	CD34 antibody [MEC14.7] (FITC)	Rat mAb	Hu, Ms	FACS, ICC/IF, IHC
GTX42057	CD34 antibody [MEC14.7] (Low endotoxin, azide free)	Rat mAb	Hu, Ms	FACS, ICC/IF, IHC, IHC-P, IP
GTX75414	CD34 antibody [MEC14.7] (PE)	Rat mAb	Hu, Ms, Rb	FACS, ICC/IF, IHC
GTX100642	CD36 antibody [C1C3]	Rb pAb	Hu, Ms	ICC/IF, IHC-P, WB
GTX54691	CD62E antibody	Rb pAb	Hu, Ms, Rat	ICC/IF, IHC-P, WB
GTX133729	CD62P antibody	Rb pAb	Hu	WB
GTX33947	c-Kit antibody	Rb pAb	Hu, Ms, Rat	ICC/IF, IHC-P, WB
GTX124232	CTGF antibody	Rb pAb	Hu, Ms, Rat, Bb, Bov	IHC-P, WB
GTX124233	CTGF antibody	Rb pAb	Hu, Ms, Rat	IHC-P, WB
GTX31630	CXCR4 antibody	Rb pAb	Hu	ELISA, FACS, ICC/IF, IP, WB
GTX100024	EDG1 antibody [C2C3], C-term	Rb pAb	Hu, Ms	ICC/IF, IHC-P, WB
GTX108199	EDG3 antibody [C2C3], C-term	Rb pAb	Hu	WB
GTX116033	Endothelin 1 antibody [C1C3]	Rb pAb	Hu	ICC/IF, IHC, WB
GTX129113	eNOS antibody	Rb pAb	Hu	WB
GTX133404	eNOS antibody	Rb pAb	Hu	WB
GTX125912	EPCR antibody	Rb pAb	Hu, Ms	WB
GTX100450	ICAM1 / CD54 antibody [N1C2]	Rb pAb	Hu	IHC-P, WB
GTX100789	Integrin alpha V antibody [C2C3], C-term	Rb pAb	Hu, Ms	ELISA, IHC-P, WB
GTX102397	NRP2 antibody [N2N3]	Rb pAb	Hu	WB
GTX106354	SCARF1 antibody	Rb pAb	Hu	WB
GTX116035	Thrombin Receptor antibody [N1N2], N-term	Rb pAb	Hu	IHC-P, WB
GTX107818	TIE1 antibody	Rb pAb	Hu, Ms	IHC-P, WB
GTX107838	TIE2 antibody [C1C3]	Rb pAb	Hu, Ms	IHC-P, WB
GTX110684	VCAM1 / CD106 antibody [N1N2], N-term	Rb pAb	Hu	IHC-P, WB
GTX132982	VE-Cadherin antibody	Rb pAb	Hu	WB
GTX128969	VEGF Receptor 1 antibody	Rb pAb	Hu	WB
GTX129943	VEGF Receptor 2/KDR antibody	Rb pAb	Hu	WB
GTX17530	VEGF Receptor 2/KDR antibody	Chk pAb	Hu, Ms, Rat, Bov	IHC, WB
GTX100807	VEGF Receptor 3 antibody	Rb pAb	Hu, Ms	WB
GTX26994	VWF antibody	Rb pAb	Hu	IHC-P, WB
GTX28822	VWF antibody (FITC)	Shp pAb	Hu, Ms	FACS, ICC/IF, IHC-Fr, IHC-R



INTERNATIONAL

Tel 886.3.6208988
Fax 886.3.6208989

Address 6F-2, No.89, Dongmei Rd., Hsinchu 300, Taiwan (R.O.C.)
E-mail international@genetex.com

USA

Toll-free 1.877.GeneTex(1.877.436.3839)
Fax 1.949.309.2888

Address 2456 Alton Parkway, Irvine, CA 92606 USA
E-mail info@genetex.com

www.genetex.com

PD-C010-171227