

# Mouse PTHrP protein, His tag

**Cat. No. GTX00047-pro**

**Applications** Functional Assay

**Species** Mouse

**Package**

10 µg

## Applications

### Application Note

PTHrP (Parathyroid Hormone Related Protein) is a neuroendocrine peptide which is a critical regulator of cellular and organ growth, development, migration, differentiation and survival and of epithelial calcium ion transport. Regulates endochondral bone development and epithelial-mesenchymal interactions during the formation of the mammary glands and teeth. A binding ELISA assay was conducted to detect the association of PTHrP with PTHR1. Briefly, PTHrP were diluted serially in PBS, with 0.01% BSA (pH 7.4). Duplicate samples of 100 µl PTHrP were then transferred to PTHR1-coated microtiter wells and incubated for 2h at 37°C. Wells were washed with PBST and incubated for 1h with anti-PTHrP pAb, then aspirated and washed 3 times. After incubation with HRP labelled secondary antibody, wells were aspirated and washed 3 times. With the addition of substrate solution, wells were incubated 15-25 minutes at 37°C. Finally, add 50 µl stop solution to the wells and read at 450nm immediately. The binding activity of PTHrP and PTHR1 was in a dose dependent manner.

**Observed MW (kDa)** 18/19 kDa.

## Properties

**Form** Lyophilized powder

**Buffer** Reconstitute with 20mM Tris and 150mM NaCl to 0.1-1.0mg/ml. Do not vortex. Lyophilized from 20mM Tris, 150mM NaCl, 1mM EDTA, 1mM DTT, 0.01% SKL, 5% Trehalose.

**Preservative** ProClin 300

**Storage** For short-term storage (1-2 weeks), store at 4°C. For long-term storage, store at -20°C or below. After reconstitution, keep as concentrated solution. Avoid freeze-thaw cycles.

**Region/Sequence** N-terminal His-Tag; Ala37~His175

**Expression System** E. coli

**Purity** > 95%

**Endotoxin** < 1 EU/µg

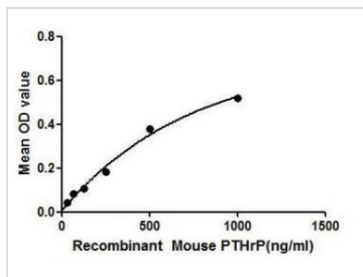
**Conjugation** Unconjugated

**Note** For laboratory use only. Not for any clinical, therapeutic, or diagnostic use in humans or animals. Not for animal or human consumption.



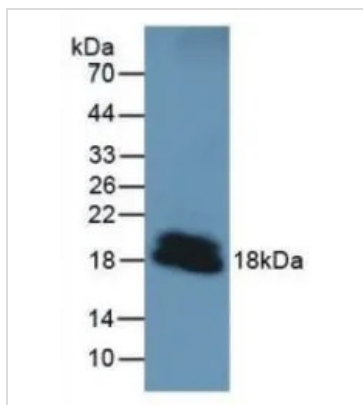
For full product information, images and publications, please visit our [website](#).

DATA IMAGES



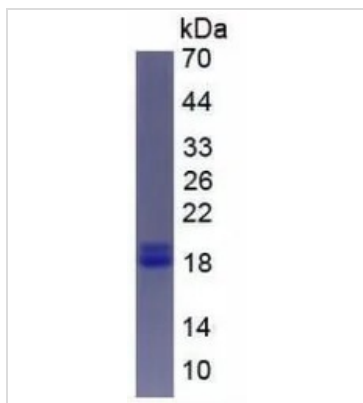
**GTX00047-pro Functional Assay Image**

Functional ELISA analysis of GTX00047-pro Mouse PTHrP protein which can bind immobilized PTHR1 protein.



**GTX00047-pro Image**

WB analysis of GTX00047-pro Mouse PTHrP protein.



**GTX00047-pro Image**

SDS-PAGE analysis of GTX00047-pro Mouse PTHrP protein.



For full product information, images and publications, please visit our [website](#).