

## Rat EndoG protein, His and GST tag

**Cat. No. GTX00057-pro****Applications** Functional Assay**Species** Rat**Package**

10 µg

## Applications

**Application Note**

ENDO G (Endonuclease G) is a mitochondrial enzyme that cleaves DNA at double-stranded (DG)n. (DC)n and at single-stranded (DC)n tracts. This protein also has ribonuclease (RNase) and RNase H activities. It has been reported that EndoG forms complexes with some other proteins, including HSP70 (Heat shock 70 kDa protein). Besides, mouse HSPA1A (Heat shock 70 kDa protein 1A) shares similarities with rat HSP1A1 in amino acid sequence with the identity of 98.44%. Thus, a binding ELISA assay was conducted to detect the association of recombinant rat ENDOG with recombinant mouse HSPA1A. Briefly, ENDOG were diluted serially in PBS with 0.01% BSA (pH 7.4). Duplicate samples of 100 µl were then transferred to HSP1A1-coated microtiter wells and incubated for 2h at 37°C. Wells were washed with PBST and incubated for 1h with anti-ENDOG pAb, then aspirated and washed 3 times. After incubation with HRP labelled secondary antibody, wells were aspirated and washed 3 times. With the addition of substrate solution, wells were incubated 15-25 minutes at 37°C. Finally, add 50 µl stop solution to the wells and read at 450nm immediately. The binding activity of ENDOG with HSP1A1 was in a dose dependent manner.

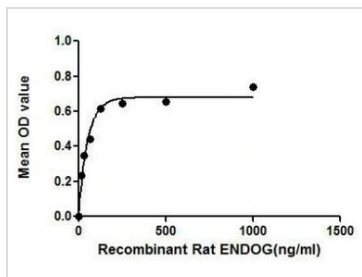
**Observed MW (kDa)** 62 kDa.

## Properties

**Form** Lyophilized powder**Buffer** Reconstitute with 20mM Tris and 150mM NaCl to 0.1-1.0mg/ml. Do not vortex. Lyophilized from 20mM Tris, 150mM NaCl, 1mM EDTA, 1mM DTT, 0.01% SKL, 5% Trehalose.**Preservative** ProClin 300**Storage** For short-term storage (1-2 weeks), store at 4°C. For long-term storage, store at -20°C or below. After reconstitution, keep as concentrated solution. Avoid freeze-thaw cycles.**Region/Sequence** Full length protein, N-terminal His and GST-Tag; Met1~Lys294 (NP\_001030110.1)**Expression System** E. coli**Purity** > 90%**Endotoxin** < 1 EU/µg**Conjugation** Unconjugated**Note** For laboratory use only. Not for any clinical, therapeutic, or diagnostic use in humans or animals. Not for animal or human consumption.

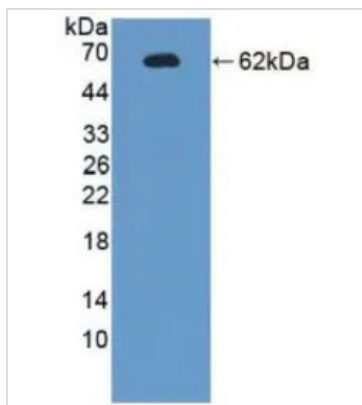
For full product information, images and publications, please visit our [website](#).

DATA IMAGES



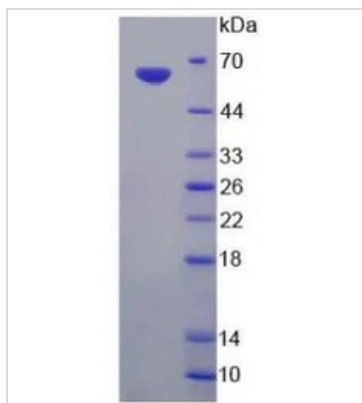
**GTX00057-pro Functional Assay Image**

Functional ELISA analysis of GTX00057-pro Rat EndoG protein which can bind immobilized HSP1A1 protein.



**GTX00057-pro Image**

WB analysis of GTX00057-pro Rat EndoG protein.



**GTX00057-pro Image**

SDS-PAGE analysis of GTX00057-pro Rat EndoG protein.



For full product information, images and publications, please visit our [website](#).