

## Rat Coagulation Factor II protein, His tag

Cat. No. GTX00058-pro

Application	Functional Assay
Species	Rat

Package  
10 µg

## APPLICATION

## Application Note

Coagulation Factor II (F2) also commonly called pro-thrombin is a coagulation protein in the blood stream that has many effects in the coagulation cascade. It is a serine protease that converts fibrinogen to fibrin and activates factors V, VII, VIII, XIII, and, in complex with thrombomodulin, protein C. Besides, Protein C Inhibitor (PCI) has been identified as an interactor of F2, thus a binding ELISA assay was conducted to detect the interaction of recombinant rat F2 and recombinant rat PCI. Briefly, F2 were diluted serially in PBS, with 0.01% BSA (pH 7.4). Duplicate samples of 100 µl were then transferred to PCI-coated microtiter wells and incubated for 2h at 37°C. Wells were washed with PBST and incubated for 1h with anti-F2 pAb, then aspirated and washed 3 times. After incubation with HRP labelled secondary antibody, wells were aspirated and washed 3 times. With the addition of substrate solution, wells were incubated 15-25 minutes at 37°C. Finally, add 50 µl stop solution to the wells and read at 450nm immediately. The binding activity of F2 and PCI was in a dose dependent manner.

Observed MW 20 kDa.

## PROPERTIES

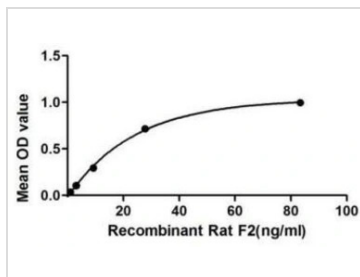
Form	Lyophilized powder
Buffer	Reconstitute with 20mM Tris and 150mM NaCl to 0.1-1.0mg/ml. Do not vortex. Lyophilized from 20mM Tris, 150mM NaCl, 1mM EDTA, 1mM DTT, 0.01% SKL, 5% Trehalose.
Preservative	ProClin 300
Storage	For short-term storage (1-2 weeks), store at 4°C. For long-term storage, store at -20°C or below. After reconstitution, keep as concentrated solution. Avoid freeze-thaw cycles.
Region/Sequence	N-terminal His-Tag; Ser201~Arg323
Expression System	E. coli
Purity	> 95%
Endotoxin	< 1 EU/µg
Conjugation	Unconjugated
Note	For laboratory use only. Not for any clinical, therapeutic, or diagnostic use in humans or animals. Not for animal or human consumption.



For full product information, images and publications, please visit our [website](#).

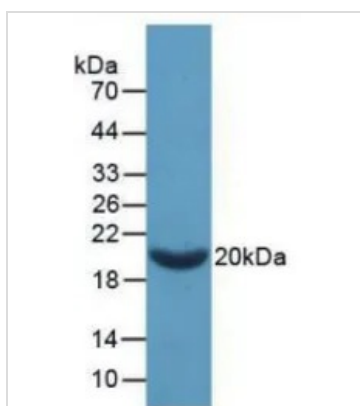
Date 2024 / 05 / 06 Page 1 of 2

## DATA IMAGES



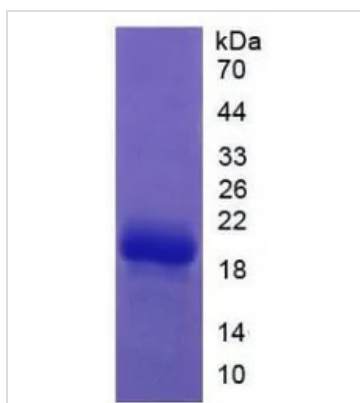
### GTX00058-pro Functional Assay Image

Functional ELISA analysis of GTX00058-pro Rat Coagulation Factor II protein which can bind immobilized PCI protein.



### GTX00058-pro Image

WB analysis of GTX00058-pro Rat Coagulation Factor II protein.



### GTX00058-pro Image

SDS-PAGE analysis of GTX00058-pro Rat Coagulation Factor II protein.



For full product information, images and publications, please visit our [website](https://www.genetex.com).