

## Rat Cathepsin A protein, His and GST tag

**Cat. No. GTX00059-pro****Applications** Functional Assay**Species** Rat**Package**

10 µg

## Applications

## Application Note

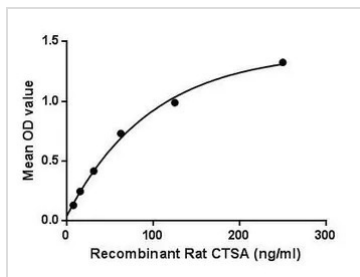
Cathepsin A (CTSA) is an enzyme that is classified both as a cathepsin and a carboxypeptidase. This gene encodes a glycoprotein that associates with lysosomal enzymes beta-galactosidase and neuraminidase to form a complex of high-molecular-weight multimers. The formation of this complex provides a protective role for stability and activity. It is protective for  $\beta$ -galactosidase and neuraminidase. Besides, Neuraminidase (NEU) has been identified as an interactor of CTSA, thus a binding ELISA assay was conducted to detect the interaction of recombinant rat CTSA and recombinant rat NEU. Briefly, CTSA were diluted serially in PBS, with 0.01% BSA (pH 7.4). Duplicate samples of 100 µl were then transferred to NEU-coated microtiter wells and incubated for 2h at 37°C. Wells were washed with PBST and incubated for 1h with anti-CTSA pAb, then aspirated and washed 3 times. After incubation with HRP labelled secondary antibody, wells were aspirated and washed 3 times. With the addition of substrate solution, wells were incubated 15-25 minutes at 37°C. Finally, add 50 µl stop solution to the wells and read at 450nm immediately. The binding activity of CTSA and NEU was in a dose dependent manner.

**Observed MW (kDa)** 57 kDa.

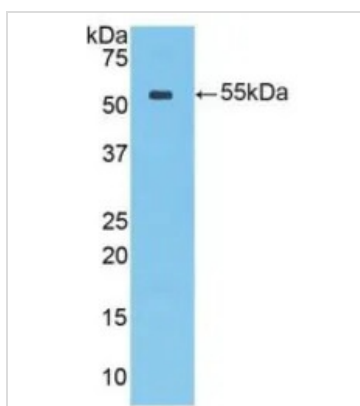
## Properties

**Form** Lyophilized powder**Buffer** Reconstitute with 20mM Tris and 150mM NaCl to 0.1-1.0mg/ml. Do not vortex. Lyophilized from 20mM Tris, 150mM NaCl, 1mM EDTA, 1mM DTT, 0.01% SKL, 5% Trehalose.**Preservative** ProClin 300**Storage** For short-term storage (1-2 weeks), store at 4°C. For long-term storage, store at -20°C or below. After reconstitution, keep as concentrated solution. Avoid freeze-thaw cycles.**Region/Sequence** N-terminal His and GST-Tag; Ala151~Val394**Expression System** E. coli**Purity** > 90%**Endotoxin** < 1 EU/µg**Conjugation** Unconjugated**Note** For laboratory use only. Not for any clinical, therapeutic, or diagnostic use in humans or animals. Not for animal or human consumption.

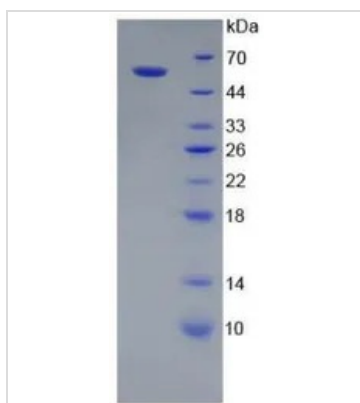
For full product information, images and publications, please visit our [website](#).

**DATA IMAGES**

**GTX00059-pro Functional Assay Image**

Functional ELISA analysis of GTX00059-pro Rat Cathepsin A protein which can bind immobilized NEU protein.


**GTX00059-pro Image**

WB analysis of GTX00059-pro Rat Cathepsin A protein.


**GTX00059-pro Image**

SDS-PAGE analysis of GTX00059-pro Rat Cathepsin A protein.



For full product information, images and publications, please visit our [website](https://www.genetex.com).