

Rat Caspase 1 protein, His tag

Cat. No. GTX00060-pro**Applications** Functional Assay**Species** Rat**Package**

10 µg

Applications

Application Note

Caspase 1 (CASP1) cleaves IL-1 beta between an Asp and an Ala, releasing the mature cytokine which is involved in a variety of inflammatory processes. It also has lots of other function, such as defenses against pathogens, cleaves and activates sterol regulatory element binding proteins (SREBPs), promotes apoptosis. Besides, Interleukin 1 Alpha (IL1a) has been identified as an interactor of CASP1, thus a binding ELISA assay was conducted to detect the interaction of recombinant rat CASP1 and recombinant rat IL1a. Briefly, CASP1 were diluted serially in PBS, with 0.01% BSA (pH 7.4). Duplicate samples of 100 µl were then transferred to IL1a-coated microtiter wells and incubated for 2h at 37°C. Wells were washed with PBST and incubated for 1h with anti-CASP1 pAb, then aspirated and washed 3 times. After incubation with HRP labelled secondary antibody, wells were aspirated and washed 3 times. With the addition of substrate solution, wells were incubated 15-25 minutes at 37°C. Finally, add 50 µl stop solution to the wells and read at 450nm immediately. The binding activity of of CASP1 and IL1a was in a dose dependent manner.

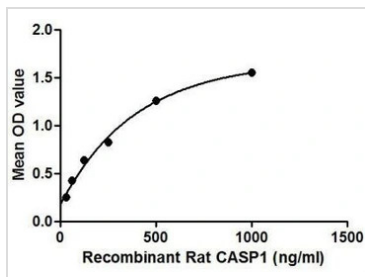
Observed MW (kDa) 21 kDa.

Properties

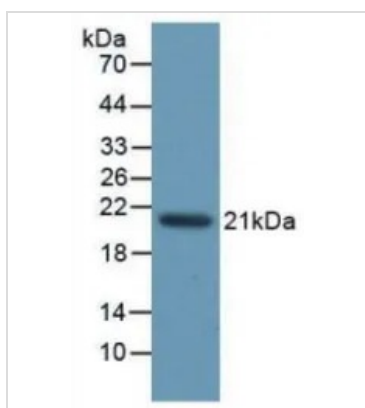
Form Lyophilized powder**Buffer** Reconstitute with 20mM Tris and 150mM NaCl to 0.1-1.0mg/ml. Do not vortex. Lyophilized from 20mM Tris, 150mM NaCl, 1mM EDTA, 1mM DTT, 0.01% SKL, 5% Trehalose.**Preservative** ProClin 300**Storage** For short-term storage (1-2 weeks), store at 4°C. For long-term storage, store at -20°C or below. After reconstitution, keep as concentrated solution. Avoid freeze-thaw cycles.**Region/Sequence** N-terminal His-Tag; Asn119~Asp296**Expression System** E. coli**Purity** > 95%**Endotoxin** < 1 EU/µg**Conjugation** Unconjugated**Note** For laboratory use only. Not for any clinical, therapeutic, or diagnostic use in humans or animals. Not for animal or human consumption.

For full product information, images and publications, please visit our [website](#).

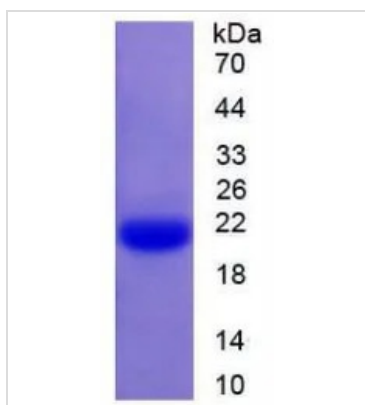
DATA IMAGES

**GTX00060-pro Functional Assay Image**

Functional ELISA analysis of GTX00060-pro Rat Caspase 1 protein which can bind immobilized IL1A protein.

**GTX00060-pro Image**

WB analysis of GTX00060-pro Rat Caspase 1 protein.

**GTX00060-pro Image**

SDS-PAGE analysis of GTX00060-pro Rat Caspase 1 protein.



For full product information, images and publications, please visit our [website](#).