

Rat SLIT2 protein, His tag

Cat. No. GTX00062-pro

Applications Functional Assay**Species** Rat**Package**

10 µg

Applications

Application Note

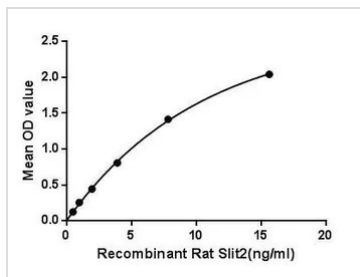
Slit is a family of secreted extracellular matrix proteins which play an important signalling role in the neural development of most bilaterians. Humans, mice and other vertebrates possess three Slit homologs: Slit1, Slit2 and Slit3. The Slit2 protein has recently been discovered to be associated with the development of new blood vessels from pre-existing vessels, or angiogenesis. Slit2 has been implicated in promoting angiogenesis in mice (both in vitro and in vivo), in the human placenta, and in tumorigenesis. Besides, Gremlin 1 (GREM1) has been identified as an interactor of Slit2, thus a binding ELISA assay was conducted to detect the interaction of recombinant rat Slit2 and recombinant rat GREM1. Briefly, Slit2 were diluted serially in PBS, with 0.01% BSA (pH 7.4). Duplicate samples of 100 µl were then transferred to GREM1-coated microtiter wells and incubated for 2h at 37°C. Wells were washed with PBST and incubated for 1h with anti-Slit2 pAb, then aspirated and washed 3 times. After incubation with HRP labelled secondary antibody, wells were aspirated and washed 3 times. With the addition of substrate solution, wells were incubated 15-25 minutes at 37°C. Finally, add 50 µl stop solution to the wells and read at 450nm immediately. The binding activity of Slit2 and GREM1 was in a dose dependent manner.

Observed MW (kDa) 20 kDa.

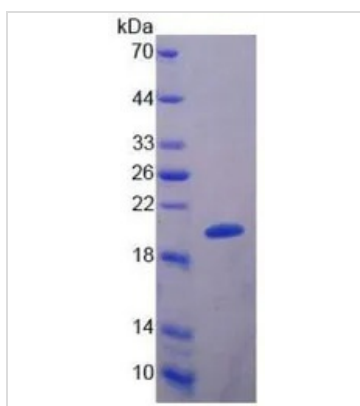
Properties

Form Lyophilized powder**Buffer** Reconstitute with 20mM Tris and 150mM NaCl to 0.1-1.0mg/ml. Do not vortex. Lyophilized from 20mM Tris, 150mM NaCl, 1mM EDTA, 1mM DTT, 0.01% SKL, 5% Trehalose.**Preservative** ProClin 300**Storage** For short-term storage (1-2 weeks), store at 4°C. For long-term storage, store at -20°C or below. After reconstitution, keep as concentrated solution. Avoid freeze-thaw cycles.**Region/Sequence** N-terminal His-Tag; Asn209~Gly374**Expression System** E. coli**Purity** > 95%**Endotoxin** < 1 EU/µg**Conjugation** Unconjugated**Note** For laboratory use only. Not for any clinical, therapeutic, or diagnostic use in humans or animals. Not for animal or human consumption.

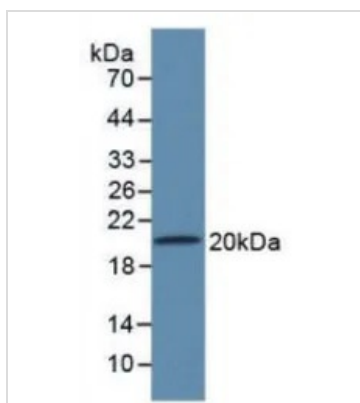
For full product information, images and publications, please visit our [website](#).

DATA IMAGES

GTX00062-pro Functional Assay Image

Functional ELISA analysis of GTX00062-pro Rat SLIT2 protein which can bind immobilized GREM1 protein.


GTX00062-pro Image

SDS-PAGE analysis of GTX00062-pro Rat SLIT2 protein.


GTX00062-pro Image

WB analysis of GTX00062-pro Rat SLIT2 protein.



For full product information, images and publications, please visit our [website](https://www.genetex.com).