

Human IL1 alpha protein, His tag (active)

Cat. No. GTX00067-pro

Applications Functional Assay**Species** Human**Package**

10 µg

Applications

Application Note

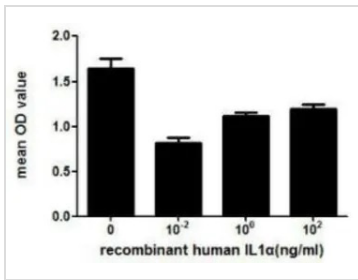
IL1 α (Interleukin-1 alpha) is a member of the interleukin 1 cytokine family. This cytokine is produced by monocytes and macrophages as a proprotein, which is proteolytically processed and released in response to cell injury, and thus induces cell apoptosis. It is reported that exposure of MCF-7 cells to certain concentration of IL1 α results in inhibition of cell growth. Thus, an cell proliferation assay of MCF-7 was conducted with the addition of IL1 α . MCF-7 cells were seeded overnight at a density of 5000 cells/well, and then treated with or without various concentrations of IL1 α for 72h, then cells were observed by inverted microscope and cell viability was measured by Cell Counting Kit-8 (CCK-8). Briefly, 10 µl of CCK-8 solution was added to each well of the plate, then measure the absorbance at 450nm using a microplate reader after incubating the plate for 1-4 hours in at 37°C. Inhibition of MCF-7 cell proliferation after incubation with IL1 α for 72h observed by inverted microscope.

Observed MW (kDa) 21 kDa.

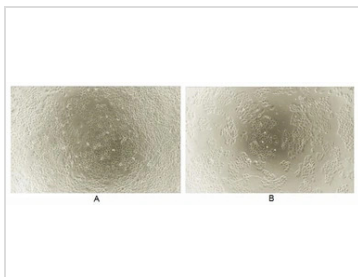
Properties

Form Lyophilized powder**Buffer** Reconstitute with 20mM Tris and 150mM NaCl to 0.1-1.0mg/ml. Do not vortex. Lyophilized from 20mM Tris, 150mM NaCl, 1mM EDTA, 1mM DTT, 0.01% SKL, 5% Trehalose.**Preservative** ProClin 300**Storage** For short-term storage (1-2 weeks), store at 4°C. For long-term storage, store at -20°C or below. After reconstitution, keep as concentrated solution. Avoid freeze-thaw cycles.**Region/Sequence** N-terminal His-Tag; Ser113~Ala271 (NP_000566.3)**Expression System** E. coli**Purity** > 97%**Endotoxin** < 1 EU/µg**Conjugation** Unconjugated**Note** For laboratory use only. Not for any clinical, therapeutic, or diagnostic use in humans or animals. Not for animal or human consumption.

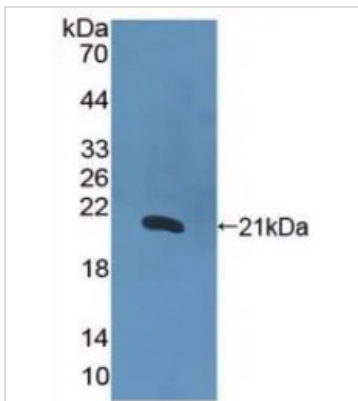
For full product information, images and publications, please visit our [website](#).

DATA IMAGES

GTX00067-pro Functional Assay Image

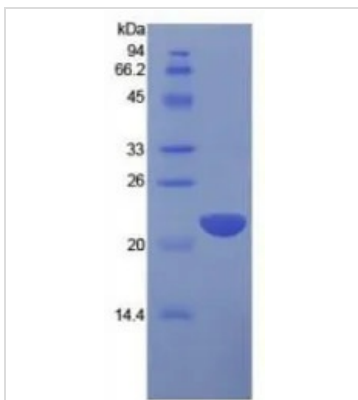
The inhibitory effect of GTX00067-pro Human IL1 alpha protein (active) on the cell proliferation of MCF-7 cells. After incubation of Human IL1 alpha protein (active) for 72hrs, cell viability was measured by Cell Counting Kit-8 (CCK-8).


GTX00067-pro Functional Assay Image

Cell suppression effect of GTX00067-pro Human IL1 alpha protein (active).
 (A) Unstimulated MCF-7 cells cultured in DMEM for 72hrs.
 (B) MCF-7 cells cultured in DMEM, stimulated with 1 ng/ml IL1α for 72hrs.


GTX00067-pro Image

WB analysis of GTX00067-pro Human IL1 alpha protein (active).


GTX00067-pro Image

SDS-PAGE analysis of GTX00067-pro Human IL1 alpha protein (active).



For full product information, images and publications, please visit our [website](http://www.genetex.com).