

## Human Prolactin protein, His tag (active)

Cat. No. GTX00069-pro

**Applications** Functional Assay**Species** Human**Package**

10 µg

## Applications

## Application Note

PRL (prolactin), also known as luteotropin, is a hormone secreted from the pituitary gland and is best known for its role in enabling mammals to produce milk. PRL plays an essential role in metabolism, regulation of the immune system. According to reports, PRL also stimulates proliferation of certain cells, including MCF-7. Thus, proliferation assay of PRL was conducted using MCF-7 cells. Briefly, MCF-7 cells were seeded into triplicate wells of 96-well plates at a density of 2000 cells/well and allowed to attach overnight, then the medium was replaced with serum-free standard DMEM prior to the addition of various concentrations of PRL. After incubated for 72h, cells were observed by inverted microscope and cell proliferation was measured by Cell Counting Kit-8 (CCK-8). Briefly, 10 µl of CCK-8 solution was added to each well of the plate, then the absorbance at 450nm was measured using a microplate reader after incubating the plate for 1-4 hours at 37°C. Cell proliferation of MCF-7 cells after stimulated with PRL. And PRL significantly promoted cell proliferation of MCF-7 cells. The ED<sub>50</sub> for this effect is typically 3. 709-8. 973 ng/ml

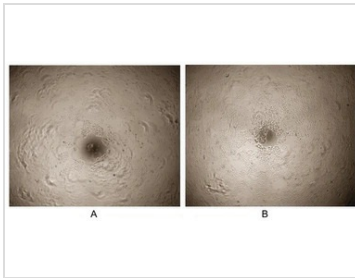
**Observed MW (kDa)** 24/28 kDa.

## Properties

**Form** Lyophilized powder**Buffer** Reconstitute with 20mM Tris and 150mM NaCl to 0.1-1.0mg/ml. Do not vortex. Lyophilized from 20mM Tris, 150mM NaCl, 1mM EDTA, 1mM DTT, 0.01% SKL, 5% Trehalose.**Preservative** ProClin 300**Storage** For short-term storage (1-2 weeks), store at 4°C. For long-term storage, store at -20°C or below. After reconstitution, keep as concentrated solution. Avoid freeze-thaw cycles.**Region/Sequence** N-terminal His-Tag; Leu29~Cys227 (NP\_000939.1)**Expression System** HEK293 cells**Purity** > 95%**Endotoxin** < 1 EU/µg**Conjugation** Unconjugated**Note** For laboratory use only. Not for any clinical, therapeutic, or diagnostic use in humans or animals. Not for animal or human consumption.

For full product information, images and publications, please visit our [website](#).

DATA IMAGES

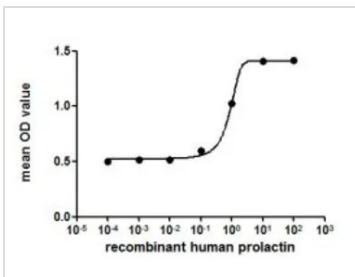


**GTX00069-pro Functional Assay Image**

Cell proliferation effect of GTX00069-pro Human Prolactin protein (active). Cell viability was measured by Cell Counting Kit-8 (CCK-8).

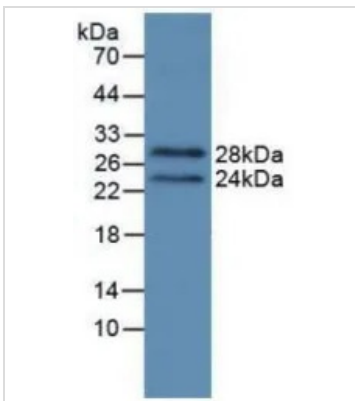
(A) Unstimulated MCF-7 cells cultured in DMEM for 72hrs.

(B) MCF-7 cells cultured in DMEM, stimulated with 1 ng/ml PRL for 72hrs.



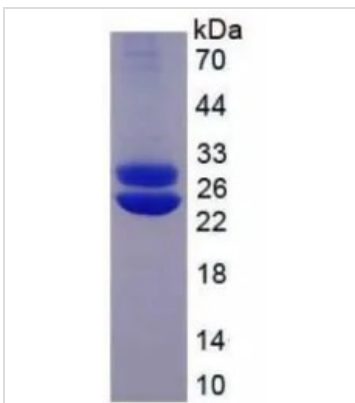
**GTX00069-pro Functional Assay Image**

The dose effect curve of GTX00069-pro Human Prolactin protein (active) on MCF-7 cells. After incubation of Human Prolactin protein (active) for 72 hrs, cell proliferation was measured by Cell Counting Kit-8 (CCK-8).



**GTX00069-pro Image**

WB analysis of GTX00069-pro Human Prolactin protein (active).



**GTX00069-pro Image**

SDS-PAGE analysis of GTX00069-pro Human Prolactin protein (active).



For full product information, images and publications, please visit our [website](http://www.genetex.com).