

## Human CCL21 protein, His tag (active)

Cat. No. GTX00072-pro

Applications Functional Assay

Species Human

Package

10 µg

## Applications

## Application Note

Secondary Lymphoid-tissue Chemokine (SLC) is a recently identified CC chemokine that is constitutively expressed in various lymphoid tissues and is a potent and specific chemoattractant for lymphocytes. Thus, chemotaxis assay used 24-well microchemotaxis system was undertaken to detect the chemotactic effect of SLC on the human T-lymphocyte leukemia cell line Jurkat. Briefly, Jurkat cells were seeded into the upper chambers (100 µl cell suspension,  $1 \times 10^6$  cells/ml in RPMI-1640 with FBS free) and SLC (1 ng/ml, 15 ng/ml and 150 ng/ml diluted separately in serum free RPMI-1640) was added in lower chamber with a polycarbonate filter (8µm pore size) used to separate the two compartments. After incubation at 37°C with 5% CO<sub>2</sub> for 1h, the filter was removed, then cells in low chamber were observed by inverted microscope at low magnification ( $\times 100$ ) and the number of migrated cells were counted at high magnification ( $\times 400$ ) randomly (five fields for each filter). The migrated Jurkat cells in low chamber at low magnification ( $\times 100$ ) randomly, and the migrated cells were counted at high magnification ( $\times 400$ ). SLC is able to induce migration of Jurkat cells, and the optimum chemotaxis of SLC occurs at 15-150 ng/ml.

Observed MW (kDa) 18 kDa.

## Properties

Form Lyophilized powder

Buffer Reconstitute with 20mM Tris and 150mM NaCl to 0.1-1.0mg/ml. Do not vortex. Lyophilized from 20mM Tris, 150mM NaCl, 1mM EDTA, 1mM DTT, 0.01% SKL, 5% Trehalose.

Preservative ProClin 300

Storage For short-term storage (1-2 weeks), store at 4°C. For long-term storage, store at -20°C or below. After reconstitution, keep as concentrated solution. Avoid freeze-thaw cycles.

Region/Sequence N-terminal His-Tag; Ser24~Pro134 (NP\_002980.1)

Expression System E. coli

Purity &gt; 97%

Endotoxin &lt; 1 EU/µg

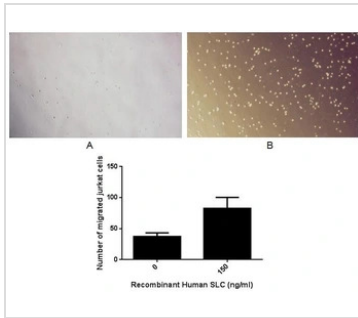
Conjugation Unconjugated

Note For laboratory use only. Not for any clinical, therapeutic, or diagnostic use in humans or animals. Not for animal or human consumption.



For full product information, images and publications, please visit our [website](#).

## DATA IMAGES

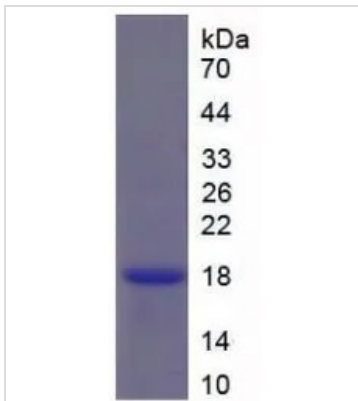


### GTX00072-pro Functional Assay Image

The chemotactic effect of GTX00072-pro Human CCL21 protein (active).

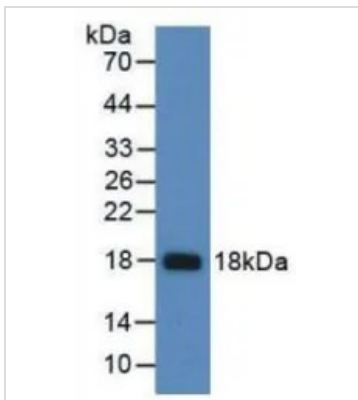
(A) Jurkat cells were seeded into the upper chambers and serum free RPMI-1640 without SLC was added in lower chamber, then cells in lower chamber were observed at low magnification ( $\times 100$ ) after incubation for 1hr.

(B) Jurkat cells were seeded into the upper chambers and serum free RPMI-1640 with 150 ng/ml SLC was added in lower chamber, then cells in lower chamber were observed at low magnification ( $\times 100$ ) after incubation for 1hr.



### GTX00072-pro Image

SDS-PAGE analysis of GTX00072-pro Human CCL21 protein (active).



### GTX00072-pro Image

WB analysis of GTX00072-pro Human CCL21 protein (active).



For full product information, images and publications, please visit our [website](https://www.genetex.com).