

## Human BMP4 protein, His tag

**Cat. No. GTX00079-pro****Applications** Functional Assay**Species** Human**Package**

10 µg

## Applications

**Application Note**

BMP4 (Bone morphogenetic protein 4) is a member of the bone morphogenetic protein family, which is involved in bone and cartilage development, specifically tooth and limb development and fracture repair. It has been proven that HJV (Hemojuvelin) acts as a coreceptor of BMPs, including BMP4; therefore, a binding ELISA assay was constructed to detect the association of recombinant human BMP4 with recombinant human HJV. Briefly, BMP4 were diluted serially in PBS, with 0.01% BSA (pH 7.4). Duplicate samples of 100 µl were then transferred to HJV-coated microtiter wells and incubated for 2h at 37°C. Wells were washed with PBST and incubated for 1h with anti-BMP4 pAb, then aspirated and washed 3 times. After incubation with HRP labelled secondary antibody, wells were aspirated and washed 3 times. With the addition of substrate solution, wells were incubated 15-25 minutes at 37°C. Finally, add 50 µl stop solution to the wells and read at 450nm immediately. The binding activity of BMP4 with HJV was in a dose dependent manner.

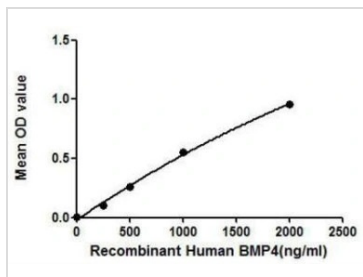
**Observed MW (kDa)** 48 kDa.

## Properties

**Form** Lyophilized powder**Buffer** Reconstitute with 20mM Tris and 150mM NaCl to 0.1-1.0mg/ml. Do not vortex. Lyophilized from 20mM Tris, 150mM NaCl, 1mM EDTA, 1mM DTT, 0.01% SKL, 5% Trehalose.**Preservative** ProClin 300**Storage** For short-term storage (1-2 weeks), store at 4°C. For long-term storage, store at -20°C or below. After reconstitution, keep as concentrated solution. Avoid freeze-thaw cycles.**Region/Sequence** N-terminal His-Tag; Ser22~Arg408 (NP\_001193.2)**Expression System** E. coli**Purity** > 97%**Endotoxin** < 1 EU/µg**Conjugation** Unconjugated**Note** For laboratory use only. Not for any clinical, therapeutic, or diagnostic use in humans or animals. Not for animal or human consumption.

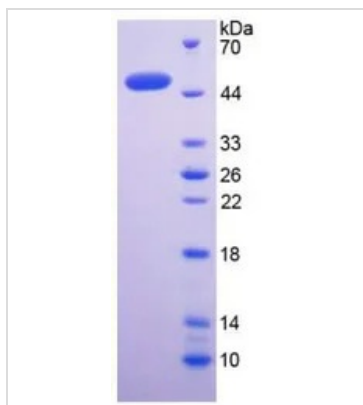
For full product information, images and publications, please visit our [website](#).

DATA IMAGES



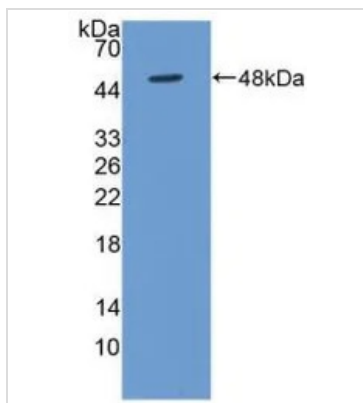
**GTX00079-pro Functional Assay Image**

Functional ELISA analysis of GTX00079-pro Human BMP4 protein which can bind immobilized HJV protein.



**GTX00079-pro Image**

SDS-PAGE analysis of GTX00079-pro Human BMP4 protein.



**GTX00079-pro Image**

WB analysis of GTX00079-pro Human BMP4 protein.



For full product information, images and publications, please visit our [website](#).