

Human Fas protein, His and MBP tag

Cat. No. GTX00080-pro**Applications** Functional Assay**Species** Human**Package**

10 µg

Applications

Application Note

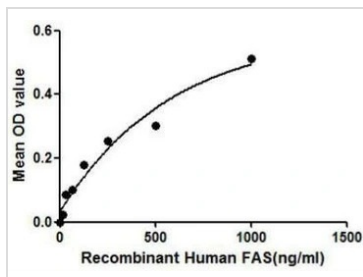
FAS (Tumor necrosis factor receptor superfamily member 6) belongs to the tumor necrosis factor receptor superfamily. FAS contains a death domain, which has been shown to play a central role in the physiological regulation of programmed cell death. A binding ELISA assay was conducted to detect the association of FAS with TNFα. Briefly, FAS were diluted serially in PBS, with 0.01% BSA (pH 7.4). Duplicate samples of 100 µl FAS were then transferred to TNFα-coated microtiter wells and incubated for 2h at 37°C. Wells were washed with PBST and incubated for 1h with anti-FAS pAb, then aspirated and washed 3 times. After incubation with HRP labelled secondary antibody, wells were aspirated and washed 3 times. With the addition of substrate solution, wells were incubated 15-25 minutes at 37°C. Finally, add 50 µl stop solution to the wells and read at 450nm immediately. The binding activity of FAS and TNFα was in a dose dependent manner.

Observed MW (kDa) 66 kDa.

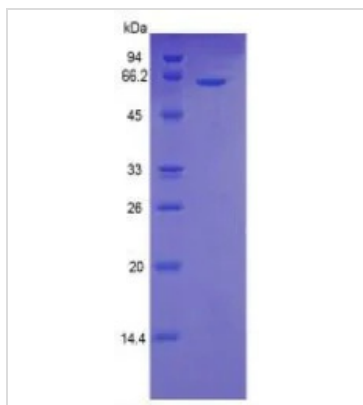
Properties

Form Lyophilized powder**Buffer** Reconstitute with 20mM Tris and 150mM NaCl to 0.1-1.0mg/ml. Do not vortex. Lyophilized from 20mM Tris, 150mM NaCl, 1mM EDTA, 1mM DTT, 0.01% SKL, 5% Trehalose.**Preservative** ProClin 300**Storage** For short-term storage (1-2 weeks), store at 4°C. For long-term storage, store at -20°C or below. After reconstitution, keep as concentrated solution. Avoid freeze-thaw cycles.**Region/Sequence** N-terminal His and MBP-Tag; Ser22~Ser172 (NP_000034.1)**Expression System** E. coli**Purity** > 95%**Endotoxin** < 1 EU/µg**Conjugation** Unconjugated**Note** For laboratory use only. Not for any clinical, therapeutic, or diagnostic use in humans or animals. Not for animal or human consumption.

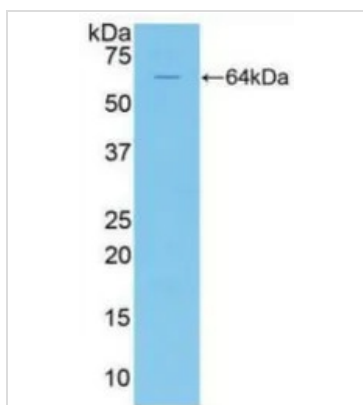
For full product information, images and publications, please visit our [website](#).

DATA IMAGES

GTX00080-pro Functional Assay Image

Functional ELISA analysis of GTX00080-pro Human Fas protein which can bind immobilized TNF alpha protein.


GTX00080-pro Image

SDS-PAGE analysis of GTX00080-pro Human Fas protein.


GTX00080-pro Image

WB analysis of GTX00080-pro Human Fas protein.



For full product information, images and publications, please visit our [website](#).