

Human GM-CSF protein, His tag (active)

Cat. No. GTX00082-pro

Applications Functional Assay**Species** Human[References \(1 \)](#)[Package](#)

10 µg

Applications

Application Note

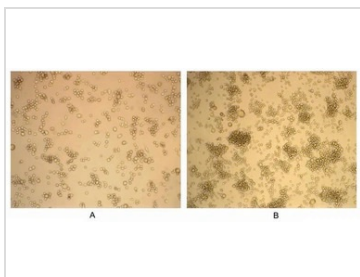
TF-1, the human erythroleukemia cell line, provides a good system for detecting the activity of GM-CSF for it is a cell line of immature erythroid origin that completely depends on interleukin 3 (IL-3) or granulocyte-macrophage colony-stimulating factor (GM-CSF) for long term growth. As reported, GM-CSF was also able to induce differentiation of human monoclastic leukemia cell line U937. TF-1 cells and U937 cells were incubated in the presence of various concentrations of rhGM-CSF, then cells were observed by inverted microscope. Cell proliferation of TF1 cells after incubation with GM-CSF (10 ng/ml) was for 3 days, and for U937 cells incubated with GM-CSF (10 ng/ml) was for 5 days.

Observed MW (kDa) 19-26 kDa.

Properties

Form Lyophilized powder**Buffer** Reconstitute with 20mM Tris and 150mM NaCl to 0.1-1.0mg/ml. Do not vortex. Lyophilized from 20mM Tris, 150mM NaCl, 1mM EDTA, 1mM DTT, 0.01% SKL, 5% Trehalose.**Preservative** ProClin 300**Storage** For short-term storage (1-2 weeks), store at 4°C. For long-term storage, store at -20°C or below. After reconstitution, keep as concentrated solution. Avoid freeze-thaw cycles.**Region/Sequence** N-terminal His-Tag; Ala18~Glu144 (NP_000749.2)**Expression System** HEK293 cells**Purity** > 95%**Endotoxin** < 1 EU/µg**Conjugation** Unconjugated**Note** For laboratory use only. Not for any clinical, therapeutic, or diagnostic use in humans or animals. Not for animal or human consumption.

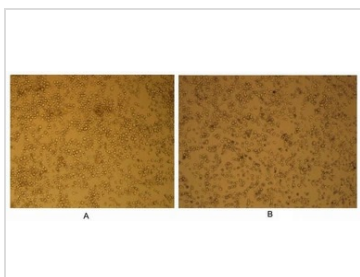
For full product information, images and publications, please visit our [website](#).

DATA IMAGES

GTX00082-pro Functional Assay Image

Cell proliferation effect of GTX00082-pro Human GM-CSF protein (active).

(A) Unstimulated TF-1 cells cultured in RPMI-1640.

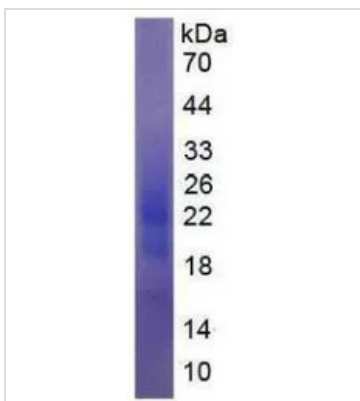
(B) TF-1 cells cultured in RPMI-1640, stimulated with GM-CSF (2 ng/ml).


GTX00082-pro Functional Assay Image

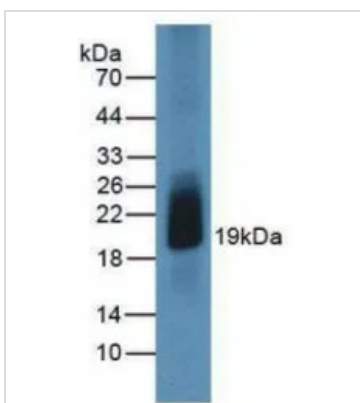
Cell differentiation effect of GTX00082-pro Human GM-CSF protein (active).

(A) Unstimulated U937 cells cultured in RPMI-1640.

(B) U937 cells cultured in RPMI-1640, stimulated with GM-CSF (10 ng/ml).


GTX00082-pro Image

SDS-PAGE analysis of GTX00082-pro Human GM-CSF protein (active).


GTX00082-pro Image

WB analysis of GTX00082-pro Human GM-CSF protein (active).



For full product information, images and publications, please visit our [website](https://www.genetex.com).