

Human Interferon gamma protein, His tag (active)

Cat. No. GTX00083-pro

Applications Functional Assay**Species** Human**Package**

10 µg

Applications

Application Note

IFN- γ is a dimerized soluble cytokine that is the only member of the type II class of interferons. The importance of IFN γ in the immune system stems in part from its ability to inhibit viral replication directly, and most importantly from its immunostimulatory and immunomodulatory effects. As reported, IFN γ is an important activator of human monocytic THP-1 cells. Therefore, THP-1 cells were incubated in RPMI-1640 with various concentration of IFN- γ , then cells were observed by inverted microscope everyday. After stimulated with IFN- γ (2 ng/ml) for 5 days, morphological changes occurred in THP-1 cells which displayed the shape of fusiform or polygon and were more likely to adhere.

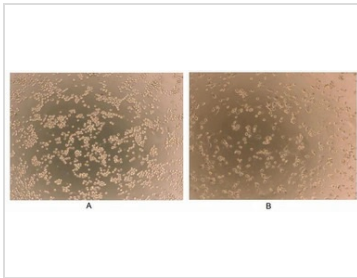
Observed MW (kDa) 16 kDa.

Properties

Form Lyophilized powder**Buffer** Reconstitute with 20mM Tris and 150mM NaCl to 0.1-1.0mg/ml. Do not vortex. Lyophilized from 20mM Tris, 150mM NaCl, 1mM EDTA, 1mM DTT, 0.01% SKL, 5% Trehalose.**Preservative** ProClin 300**Storage** For short-term storage (1-2 weeks), store at 4°C. For long-term storage, store at -20°C or below. After reconstitution, keep as concentrated solution. Avoid freeze-thaw cycles.**Region/Sequence** N-terminal His-Tag; Gln24~Gln166 (NP_000610.2)**Expression System** E. coli**Purity** > 95%**Endotoxin** < 1 EU/µg**Conjugation** Unconjugated**Note** For laboratory use only. Not for any clinical, therapeutic, or diagnostic use in humans or animals. Not for animal or human consumption.

For full product information, images and publications, please visit our [website](#).

DATA IMAGES

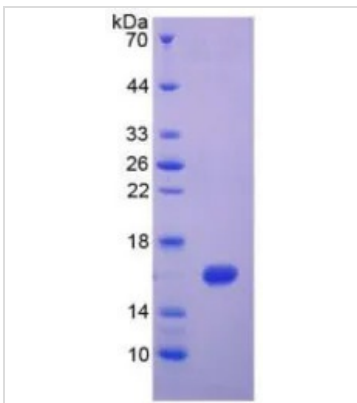


GTX00083-pro Functional Assay Image

Activation effect of GTX00083-pro Human Interferon gamma protein (active).

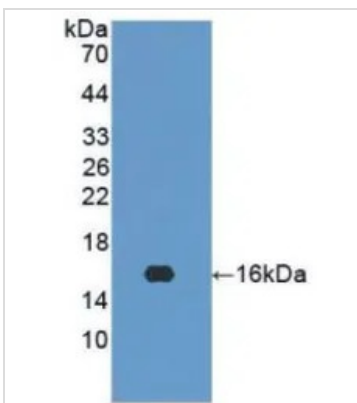
(A) Unstimulated THP-1 cells cultured in RPMI-1640.

(B) THP-1 cells cultured in RPMI-1640, stimulated with 2 ng/ml IFN gamma for 5 days.



GTX00083-pro Image

SDS-PAGE analysis of GTX00083-pro Human Interferon gamma protein (active).



GTX00083-pro Image

WB analysis of GTX00083-pro Human Interferon gamma protein (active).



For full product information, images and publications, please visit our [website](https://www.genetex.com).