

## Human Interferon gamma protein, His tag (active)

Cat. No. GTX00084-pro

Application	Functional Assay
Species	Human

Package  
10 µg

## APPLICATION

## Application Note

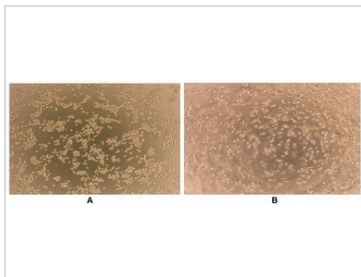
IFN- $\gamma$  is a dimerized soluble cytokine that is the only member of the type II class of interferons. The importance of IFN $\gamma$  in the immune system stems in part from its ability to inhibit viral replication directly, and most importantly from its immunostimulatory and immunomodulatory effects. As reported, IFN $\gamma$  is an important activator of human monocytic THP-1 cells. Therefore, THP-1 cells were incubated in RPMI-1640 with various concentration of IFN- $\gamma$ , then cells were observed by inverted microscope everyday. After stimulated with IFN- $\gamma$ (5 ng/ml) for 5 days, morphological changes occurred in THP-1 cells which displayed the shape of fusiform or polygon and were more likely to adhere.

## PROPERTIES

Form	Lyophilized powder
Buffer	Reconstitute with 20mM Tris and 150mM NaCl to 0.1-1.0mg/ml. Do not vortex. Lyophilized from 20mM Tris, 150mM NaCl, 1mM EDTA, 1mM DTT, 0.01% SKL, 5% Trehalose.
Preservative	ProClin 300
Storage	For short-term storage (1-2 weeks), store at 4°C. For long-term storage, store at -20°C or below. After reconstitution, keep as concentrated solution. Avoid freeze-thaw cycles.
Region/Sequence	N-terminal His-Tag; Gln24~Gln166 (NP_000610.2)
Expression System	HEK293 cells
Purity	> 95%
Endotoxin	< 1 EU/µg
Conjugation	Unconjugated
Note	For laboratory use only. Not for any clinical, therapeutic, or diagnostic use in humans or animals. Not for animal or human consumption.



For full product information, images and publications, please visit our [website](#).

**DATA IMAGES**

**GTX00084-pro Functional Assay Image**

Activation effect of GTX00084-pro Human Interferon gamma protein (active).

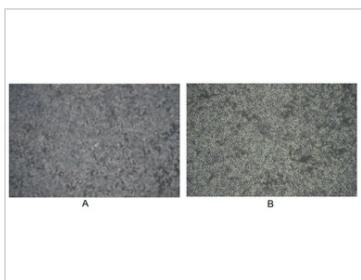
(A) Unstimulated THP-1 cells cultured in RPMI-1640.

(B) THP-1 cells cultured in RPMI-1640, stimulated with 2 ng/ml IFN gamma for 5 days.

Sample (cell lysates of Raw 246.7 cells)	Concentration of iNOS (ng/mL)
Unstimulated	2.71
Stimulated with IFNg (2ng/mL)	8.62

**GTX00084-pro Functional Assay Image**

ELISA detection of iNOS expression from RAW 246.7 cells stimulated by GTX00084-pro Human Interferon gamma protein (active) at 2 ng/ml for 24hrs.


**GTX00084-pro Functional Assay Image**

Activation effect of GTX00084-pro Human Interferon gamma protein (active).

(A) Unstimulated Raw 246.7 cells cultured in DMEM (negative control).

(B) Raw 246.7 cells cultured in DMEM, stimulated with IFNg.



For full product information, images and publications, please visit our [website](#).