

## Human IL15 protein, His tag (active)

Cat. No. GTX00088-pro

**Applications** Functional Assay**Species** Human**Package**

10 µg

## Applications

## Application Note

Interleukin 15 (IL15) is a widely expressed cytokine that is structurally and functionally related to IL2, which plays an important role in many immunological diseases. IL15 also regulates T and natural killer (NK) cell activation and proliferation. To test the effect of IL15 on cells proliferation of human T lymphocyte cells, Jurkat cells were seeded into triplicate wells of 96-well plates at a density of  $1 \times 10^4$  cells/well in RPMI-1640 with the addition of various concentrations of IL15. After incubated for 72h, cells were observed by inverted microscope and cell proliferation was measured by Cell Counting Kit-8 (CCK-8). Briefly, 10 µl of CCK-8 solution was added to each well of the plate, then the absorbance at 450nm was measured using a microplate reader after incubating the plate for 1-4 hours at 37°C. Cell proliferation of Jurkat cells after incubation with IL15 for 72h observed by inverted microscope.

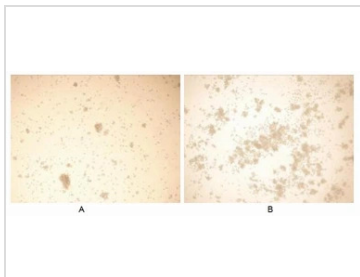
**Observed MW (kDa)** 14/16/18 kDa.

## Properties

**Form** Lyophilized powder**Buffer** Reconstitute with 20mM Tris and 150mM NaCl to 0.1-1.0mg/ml. Do not vortex. Lyophilized from 20mM Tris, 150mM NaCl, 1mM EDTA, 1mM DTT, 0.01% SKL, 5% Trehalose.**Preservative** ProClin 300**Storage** For short-term storage (1-2 weeks), store at 4°C. For long-term storage, store at -20°C or below. After reconstitution, keep as concentrated solution. Avoid freeze-thaw cycles.**Region/Sequence** N-terminal His-Tag; Trp50~Ser162 (NP\_000576.1)**Expression System** HEK293 cells**Purity** > 97%**Endotoxin** < 1 EU/µg**Conjugation** Unconjugated**Note** For laboratory use only. Not for any clinical, therapeutic, or diagnostic use in humans or animals. Not for animal or human consumption.

For full product information, images and publications, please visit our [website](#).

DATA IMAGES

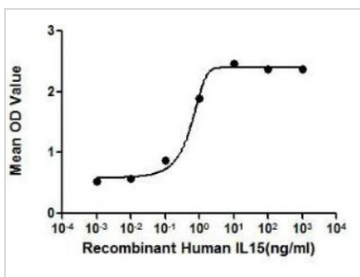


**GTX00088-pro Functional Assay Image**

Cell proliferation effect of GTX00088-pro Human IL15 protein (active).

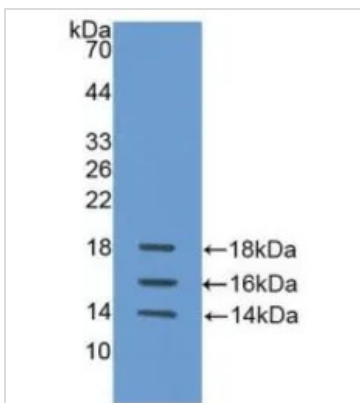
(A) Unstimulated Jurkat cells cultured in RPMI-1640 for 72hrs.

(B) Jurkat cells cultured in RPMI-1640, stimulated with 1 ng/ml IL15 for 72hrs.



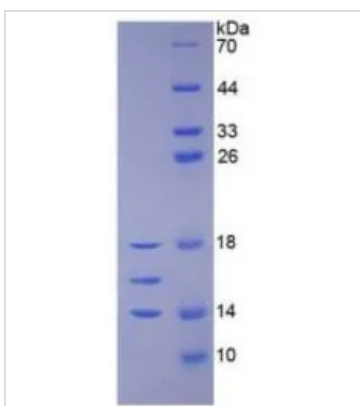
**GTX00088-pro Functional Assay Image**

The dose effect curve of GTX00088-pro Human IL15 protein (active) on Jurkat cells. After incubation of Human IL15 protein (active) for 72 hrs, cell proliferation was measured by Cell Counting Kit-8 (CCK-8).



**GTX00088-pro Image**

WB analysis of GTX00088-pro Human IL15 protein (active).



**GTX00088-pro Image**

SDS-PAGE analysis of GTX00088-pro Human IL15 protein (active).



For full product information, images and publications, please visit our [website](http://www.genetex.com).