

Human IL16 protein, His tag (active)

Cat. No. GTX00089-pro**Applications** Functional Assay**Species** Human**Package**

10 µg

Applications

Application Note

Pro-IL16 (Interleukin16) is a 631 amino acid precursor molecule, which is then cleaved into different isoforms. Researches have shown that the recombinant human IL16, containing C-terminal 130 amino acids, has same bioactivity as the natural secreted human IL16. Besides, IL16 has been considered to stimulate the proliferation of Jurkat cells at low dose (10⁻⁹ M). Thus, a proliferation assay of recombinant human IL16 was conducted using Jurkat cells. Briefly, Jurkat cells were seeded into triplicate wells of 96-well plates at a density of 1x10⁴ cells/well in RPMI-1640 with the addition of various concentrations of IL16. After incubated for 72h, cells were observed by inverted microscope and cell proliferation was measured by Cell Counting Kit-8 (CCK-8). Briefly, 10 µl of CCK-8 solution was added to each well of the plate, then the absorbance at 450nm was measured using a microplate reader after incubating the plate for 1-4 hours at 37°C. Cell proliferation of Jurkat cells after incubation with IL16 for 72h observed by inverted microscope.

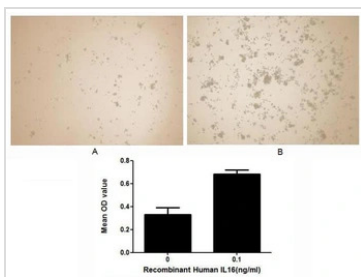
Observed MW (kDa) 17 kDa.

Properties

Form Lyophilized powder**Buffer** Reconstitute with 20mM Tris and 150mM NaCl to 0.1-1.0mg/ml. Do not vortex. Lyophilized from 20mM Tris, 150mM NaCl, 1mM EDTA, 1mM DTT, 0.01% SKL, 5% Trehalose.**Preservative** ProClin 300**Storage** For short-term storage (1-2 weeks), store at 4°C. For long-term storage, store at -20°C or below. After reconstitution, keep as concentrated solution. Avoid freeze-thaw cycles.**Region/Sequence** N-terminal His-Tag; Met1203~Ser1332 (NP_001165599.1)**Expression System** E. coli**Purity** > 97%**Endotoxin** < 1 EU/µg**Conjugation** Unconjugated**Note** For laboratory use only. Not for any clinical, therapeutic, or diagnostic use in humans or animals. Not for animal or human consumption.

For full product information, images and publications, please visit our [website](#).

DATA IMAGES

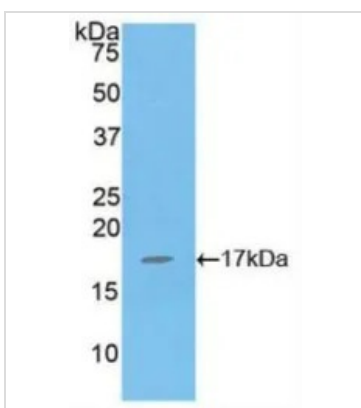


GTX00089-pro Functional Assay Image

Cell proliferation effect of GTX00089-pro Human IL16 protein (active). Cell viability was measured by Cell Counting Kit-8 (CCK-8).

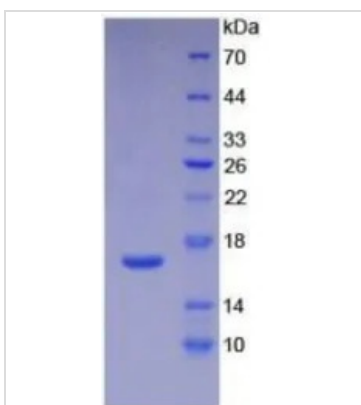
(A) Unstimulated Jurkat cells cultured in RPMI-1640.

(B) Jurkat cells cultured in RPMI-1640, stimulated with 0.1 ng/ml IL16.



GTX00089-pro Image

WB analysis of GTX00089-pro Human IL16 protein (active).



GTX00089-pro Image

SDS-PAGE analysis of GTX00089-pro Human IL16 protein (active).



For full product information, images and publications, please visit our [website](#).