

Human IL17A protein, His tag

Cat. No. GTX00090-pro**Applications** Functional Assay**Species** Human**Package**

10 µg

Applications

Application Note

IL17 (interleukin 17) is a member of IL17 cytokine family, which is a proinflammatory cytokine produced by activated T cells. This cytokine regulates the activities of NF-kappaB and mitogen-activated protein kinases. It is reported that IL17 is a ligand for IL17RA, indicating its interaction with IL17RA. Thus, a binding ELISA assay was constructed to detect the association of recombinant human IL17 with recombinant human IL17RA. Briefly, IL17 were diluted serially in PBS with 0.1% BSA (pH 7.4). Duplicate samples of 100 µl were then transferred to IL17RA-coated microtiter wells and incubated for 2h at 37°C. Wells were washed with PBST and incubated for 1h with anti-IL17 pAb, then aspirated and washed 3 times. After incubation with HRP labelled secondary antibody, wells were aspirated and washed 3 times. With the addition of substrate solution, wells were incubated 15-25 minutes at 37°C. Finally, add 50 µl stop solution to the wells and read at 450nm immediately. The binding activity of IL17 with IL17RA was in a dose dependent manner.

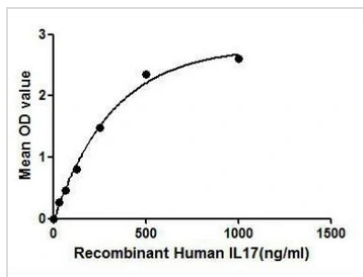
Observed MW (kDa) 20 kDa.

Properties

Form Lyophilized powder**Buffer** Reconstitute with 20mM Tris and 150mM NaCl to 0.1-1.0mg/ml. Do not vortex. Lyophilized from 20mM Tris, 150mM NaCl, 1mM EDTA, 1mM DTT, 0.01% SKL, 5% Trehalose.**Preservative** ProClin 300**Storage** For short-term storage (1-2 weeks), store at 4°C. For long-term storage, store at -20°C or below. After reconstitution, keep as concentrated solution. Avoid freeze-thaw cycles.**Region/Sequence** N-terminal His-Tag; Ile20~Ala155 (NP_002181.1)**Expression System** E. coli**Purity** > 97%**Endotoxin** < 1 EU/µg**Conjugation** Unconjugated**Note** For laboratory use only. Not for any clinical, therapeutic, or diagnostic use in humans or animals. Not for animal or human consumption.

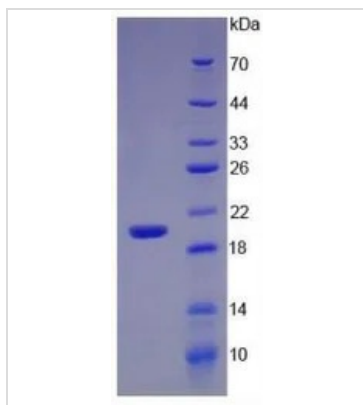
For full product information, images and publications, please visit our [website](#).

DATA IMAGES



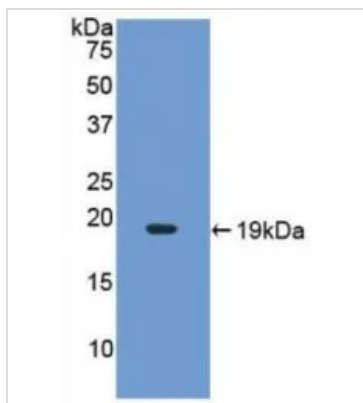
GTX00090-pro Functional Assay Image

Functional ELISA analysis of GTX00090-pro Human IL17A protein which can bind immobilized IL17RA protein.



GTX00090-pro Image

SDS-PAGE analysis of GTX00090-pro Human IL17A protein.



GTX00090-pro Image

WB analysis of GTX00090-pro Human IL17A protein.



For full product information, images and publications, please visit our [website](#).