

Human IL1 Receptor 1 protein, His tag

Cat. No. GTX00091-pro

Application	Functional Assay
Species	Human

Package
10 µg

APPLICATION

Application Note

IL1R1 (Interleukin 1 Receptor Type I), also known as CD121a, is an important mediator involved in many cytokine induced immune and inflammatory responses. It belongs to the interleukin-1 receptor family, and is a receptor for interleukin 1 alpha (IL1a), interleukin 1 beta (IL1B), and interleukin 1 receptor antagonist (IL1RA). Thus, a binding ELISA assay was conducted to detect the association of IL1R1 with IL1a. Briefly, IL1R1 were diluted serially in PBS with 0.01% BSA (pH 7.4). Duplicate samples of 100 µl were then transferred to IL1a-coated microtiter wells and incubated for 2h at 37°C. Wells were washed with PBST and incubated for 1h with anti-IL1R1 pAb, then aspirated and washed 3 times. After incubation with HRP labelled secondary antibody, wells were aspirated and washed 3 times. With the addition of substrate solution, wells were incubated 15-25 minutes at 37°C. Finally, add 50 µl stop solution to the wells and read at 450nm immediately. The binding activity of IL1R1 with IL1a was in a dose dependent manner.

Observed MW 14 kDa.

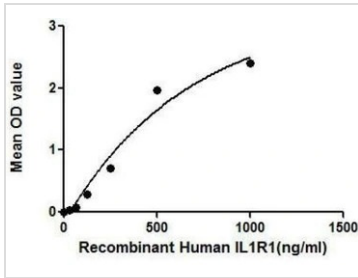
PROPERTIES

Form	Lyophilized powder
Buffer	Reconstitute with 20mM Tris and 150mM NaCl to 0.1-1.0mg/ml. Do not vortex. Lyophilized from 20mM Tris, 150mM NaCl, 1mM EDTA, 1mM DTT, 0.01% SKL, 5% Trehalose.
Preservative	ProClin 300
Storage	For short-term storage (1-2 weeks), store at 4°C. For long-term storage, store at -20°C or below. After reconstitution, keep as concentrated solution. Avoid freeze-thaw cycles.
Region/Sequence	N-terminal His-Tag; Asp21~Ile109 (NP_000868.1)
Expression System	E. coli
Purity	> 95%
Endotoxin	< 1 EU/µg
Conjugation	Unconjugated
Note	For laboratory use only. Not for any clinical, therapeutic, or diagnostic use in humans or animals. Not for animal or human consumption.

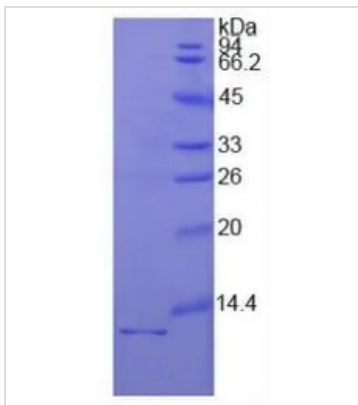


For full product information, images and publications, please visit our [website](#).

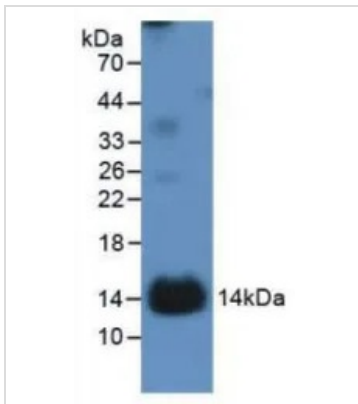
Date 2024 / 05 / 23 Page 1 of 2

DATA IMAGES

GTx00091-pro Functional Assay Image

Functional ELISA analysis of GTx00091-pro Human IL1 Receptor 1 protein which can bind immobilized IL1 alpha protein.


GTx00091-pro Image

SDS-PAGE analysis of GTx00091-pro Human IL1 Receptor 1 protein.


GTx00091-pro Image

WB analysis of GTx00091-pro Human IL1 Receptor 1 protein.



For full product information, images and publications, please visit our [website](https://www.genetex.com).