

Human IL2 protein, His tag (active)

Cat. No. GTX00092-pro

Application	Functional Assay
Species	Human

Package
10 µg

APPLICATION

Application Note

IL2 (Interleukin-2) is a cytokine produced by T-cells in response to antigenic or mitogenic stimulation. IL2 is a type of signaling molecule in the immune system, that is required for both T-cell and B-cell proliferation and other activities crucial to regulation of the immune response. Recombinant human IL2 shares 56% AA sequence identity with mouse IL2, suggesting the exist of cross-species activity. Therefore, in order to detect the bioactivity of rhIL2, a cell proliferation assay has been conducted using CTLL-2 mouse cytotoxic T cells. Briefly, CTLL-2 cells were seeded into triplicate wells of 96-well plates at a density of 5000 cells/well with or without the addition of various concentrations of IL2. After incubated for 48h, cells were observed by inverted microscope. Proliferation of CTLL-2 cells after incubation with IL2 for 48h observed by inverted microscope.

Observed MW 18 kDa.

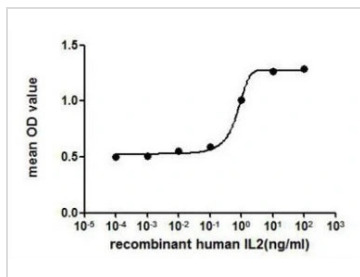
PROPERTIES

Form	Lyophilized powder
Buffer	Reconstitute with 10mM PBS (pH7.4) to 0.1-1.0mg/ml. Do not vortex. Lyophilized from PBS (pH7.6), 5% Trehalose.
Preservative	No preservative
Storage	For short-term storage (1-2 weeks), store at 4°C. For long-term storage, store at -20°C or below. After reconstitution, keep as concentrated solution. Avoid freeze-thaw cycles.
Region/Sequence	N-terminal His-Tag; Ala21~Thr153 (NP_000577.2)
Expression System	HEK293 cells
Purity	> 95%
Endotoxin	< 1 EU/µg
Conjugation	Unconjugated
Note	For laboratory use only. Not for any clinical, therapeutic, or diagnostic use in humans or animals. Not for animal or human consumption.



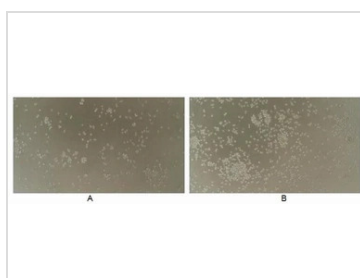
For full product information, images and publications, please visit our [website](#).

DATA IMAGES



GTX00092-pro Functional Assay Image

The dose effect curve of GTX00092-pro Human IL2 protein (active) on CTLL-2 cells. After incubation of Human IL2 protein (active) for 48 hrs, cell proliferation was measured by Cell Counting Kit-8 (CCK-8).

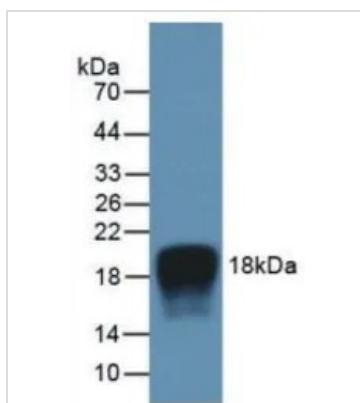


GTX00092-pro Functional Assay Image

Cell proliferation effect of GTX00092-pro Human IL2 protein (active).

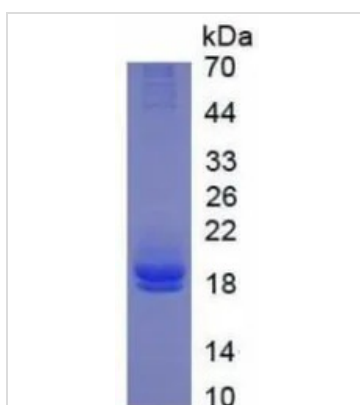
(A) Unstimulated CTLL-2 cells cultured in RPMI-1640 for 48hrs.

(B) CTLL-2 cells cultured in RPMI-1640, stimulated with 10 ng/ml IL2 for 48hrs.



GTX00092-pro Image

WB analysis of GTX00092-pro Human IL2 protein (active).



GTX00092-pro Image

SDS-PAGE analysis of GTX00092-pro Human IL2 protein (active).



For full product information, images and publications, please visit our [website](https://www.genetex.com).