

Human IL6 protein, His and GST tag (active)

Cat. No. GTX00094-pro

Application	Functional Assay
Species	Human

Package
10 µg

APPLICATION

Application Note

Interleukin-6 (IL-6), a pro-inflammatory cytokine and an anti-inflammatory myokine, plays important roles in the acute phase reaction, inflammation, hematopoiesis, bone metabolism, and cancer progression. It has been reported that IL-6 significantly increased the MMP-10 protein level in the human lung cancer A549 cells through the JAK/STAT signaling pathway. Briefly, A549 cells were seeded into 6-well cell culture clusters and allowed to grow to 50-70% confluence, then different concentrations of IL-6 was added. After incubated for 24h, the protein levels of MMP-10 in the cell supernatant were determined by Western blot. MMP-10 protein level significantly increased in A549 cells due to the stimulation of IL-6.

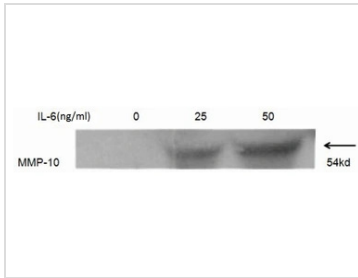
Observed MW 47 kDa.

PROPERTIES

Form	Lyophilized powder
Buffer	Reconstitute with 20mM Tris and 150mM NaCl to 0.1-1.0mg/ml. Do not vortex. Lyophilized from 20mM Tris, 150mM NaCl, 1mM EDTA, 1mM DTT, 0.01% SKL, 5% Trehalose.
Preservative	ProClin 300
Storage	For short-term storage (1-2 weeks), store at 4°C. For long-term storage, store at -20°C or below. After reconstitution, keep as concentrated solution. Avoid freeze-thaw cycles.
Region/Sequence	N-terminal His and GST-Tag; Pro29~Met212 (NP_000591.1)
Expression System	E. coli
Purity	> 95%
Endotoxin	< 1 EU/µg
Conjugation	Unconjugated
Note	For laboratory use only. Not for any clinical, therapeutic, or diagnostic use in humans or animals. Not for animal or human consumption.

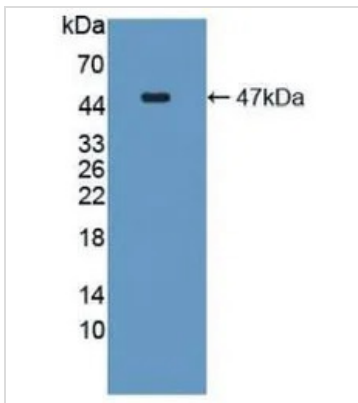


For full product information, images and publications, please visit our [website](#).

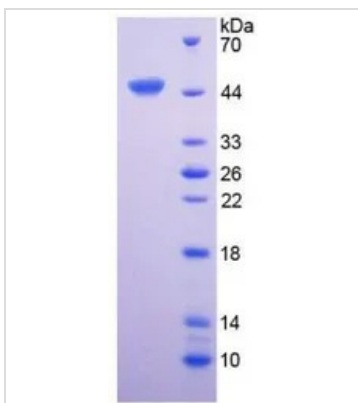
DATA IMAGES

GTX00094-pro Functional Assay Image

Activation of MMP10 protein expression on A549 cells induced by GTX00094-pro Human IL6 protein (active) for 24hrs.

Recombinant protein concentrations: 25, and 50 ng/ml.


GTX00094-pro Image

WB analysis of GTX00094-pro Human IL6 protein (active).


GTX00094-pro Image

SDS-PAGE analysis of GTX00094-pro Human IL6 protein (active).



For full product information, images and publications, please visit our [website](https://www.genetex.com).