

Human IL6 protein, His tag (active)

Cat. No. GTX00095-pro

Applications Functional Assay**Species** Human**Package**

10 µg

Applications

Application Note

Interleukin 6 (IL-6) is an interleukin that acts as both a pro-inflammatory cytokine and an anti-inflammatory myokine. Current data suggest that direct application of IL-6 on breast cancer cells inhibits proliferation in ER-positive (estrogen- receptor- positive) cells through the Jak/Stat3 pathway. To test the inhibitory effect of IL-6 on proliferation of ER-positive MCF-7 cell line, cells were seeded into triplicate wells of 96-well plates at a density of 5000 cells/well and allowed to attach overnight, then the medium was replaced with serum-free standard DMEM prior to the addition of various concentrations of IL-6. After incubated for 96h, cells were observed by inverted microscope. The inhibitory effect of IL-6 on cell proliferation of MCF-7 cells observed by inverted microscope.

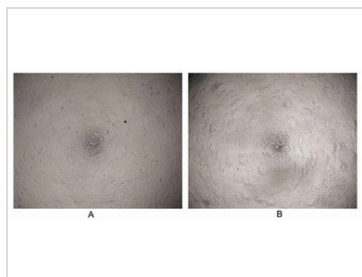
Observed MW (kDa) 22/24 kDa.

Properties

Form Lyophilized powder**Buffer** Reconstitute with 20mM Tris and 150mM NaCl to 0.1-1.0mg/ml. Do not vortex. Lyophilized from 20mM Tris, 150mM NaCl, 1mM EDTA, 1mM DTT, 0.01% SKL, 5% Trehalose.**Preservative** ProClin 300**Storage** For short-term storage (1-2 weeks), store at 4°C. For long-term storage, store at -20°C or below. After reconstitution, keep as concentrated solution. Avoid freeze-thaw cycles.**Region/Sequence** N-terminal His-Tag; Val30~Met212 (NP_000591.1)**Expression System** HEK293 cells**Purity** > 97%**Endotoxin** < 1 EU/µg**Conjugation** Unconjugated**Note** For laboratory use only. Not for any clinical, therapeutic, or diagnostic use in humans or animals. Not for animal or human consumption.

For full product information, images and publications, please visit our [website](#).

DATA IMAGES

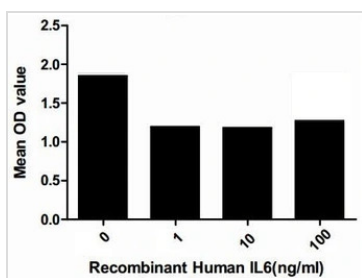


GTX00095-pro Functional Assay Image

The inhibition effect of GTX00095-pro Human IL6 protein (active) on cell proliferation.

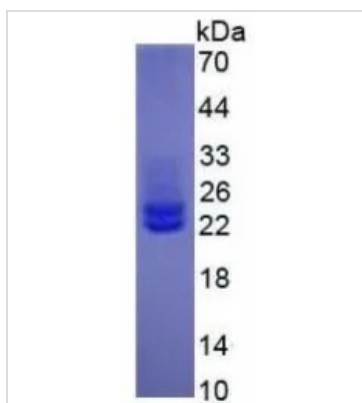
(A) Unstimulated MCF-7 cells cultured in serum-free DMEM for 96hrs.

(B) MCF-7 cells cultured in serum-free DMEM, stimulated with 100 ng/ml IL-6 for 96hrs.



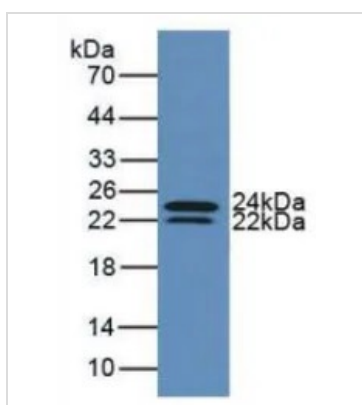
GTX00095-pro Functional Assay Image

Cell suppression effect of GTX00095-pro Human IL6 protein (active) on MCF-7 cells. After incubation of Human IL6 protein (active) for 96hrs, cell viability was measured by Cell Counting Kit-8 (CCK-8).



GTX00095-pro Image

SDS-PAGE analysis of GTX00095-pro Human IL6 protein (active).



GTX00095-pro Image

WB analysis of GTX00095-pro Human IL6 protein (active).



For full product information, images and publications, please visit our [website](https://www.genetex.com).