

Human VEGFC protein, His tag (active)

Cat. No. GTX00104-pro

Application	Functional Assay
Species	Human

Package
10 µg

APPLICATION

Application Note

Vascular endothelial growth factor C (VEGFC) is a protein that is a member of the platelet-derived growth factor/vascular endothelial growth factor (PDGF/VEGF) family. It plays key roles in the physiology and pathology of many aspects of the cardiovascular system, including vasculogenesis, hematopoiesis, angiogenesis and vascular permeability. To test the effect of VEGFC on cell proliferation of ECV304 endothelium cell line, cells were seeded into triplicate wells of 96-well plates at a density of 2000 cells/well and allowed to attach overnight, then the medium was replaced with serum-free standard DMEM prior to the addition of various concentrations of VEGFC. After incubated for 72h, cells were observed by inverted microscope and cell proliferation was measured by Cell Counting Kit-8 (CCK-8). Briefly, 10µL of CCK-8 solution was added to each well of the plate, then measure the absorbance at 450nm using a microplate reader after incubating the plate for 1-4 hours at 37°C. And VEGFC significantly promoted cell proliferation of ECV304 cells. The ED₅₀ for this effect is typically 0.304-1.339µg/ml.

Observed MW 45 kDa.

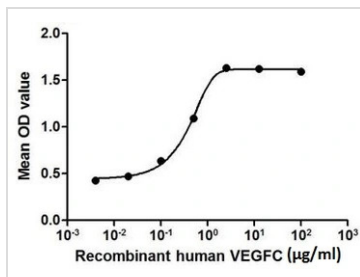
PROPERTIES

Form	Lyophilized powder
Buffer	Reconstitute with 20mM Tris and 150mM NaCl to 0.1-1.0mg/ml. Do not vortex. Lyophilized from 20mM Tris, 150mM NaCl, 1mM EDTA, 1mM DTT, 0.01% SKL, 5% Trehalose.
Preservative	ProClin 300
Storage	For short-term storage (1-2 weeks), store at 4°C. For long-term storage, store at -20°C or below. After reconstitution, keep as concentrated solution. Avoid freeze-thaw cycles.
Region/Sequence	N-terminal His-Tag; Glu47~Trp413 (NP_005420.1)
Expression System	E. coli
Purity	> 90%
Endotoxin	< 1 EU/µg
Conjugation	Unconjugated
Note	For laboratory use only. Not for any clinical, therapeutic, or diagnostic use in humans or animals. Not for animal or human consumption.



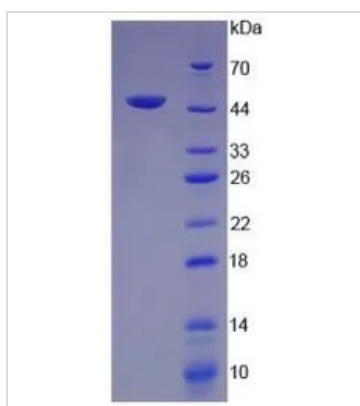
For full product information, images and publications, please visit our [website](#).

DATA IMAGES



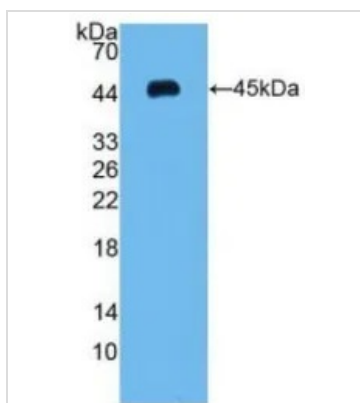
GTX00104-pro Functional Assay Image

The dose effect curve of GTX00104-pro Human VEGFC protein (active) on ECV-304 cells. After incubation of Human VEGFC protein (active) for 72 hrs, cell proliferation was measured by Cell Counting Kit-8 (CCK-8).



GTX00104-pro Image

SDS-PAGE analysis of GTX00104-pro Human VEGFC protein (active).



GTX00104-pro Image

WB analysis of GTX00104-pro Human VEGFC protein (active).



For full product information, images and publications, please visit our [website](https://www.genetex.com).