

Human Adiponectin Receptor 1 protein, His and GST tag

Cat. No. GTX00105-pro**Applications** Functional Assay**Species** Human**Package**

10 µg

Applications

Application Note

ADIPOR1 (Adiponectin receptor protein 1) is a receptor for ADP (30kDa adipocyte complement-related protein), an essential hormone secreted by adipocytes that regulates glucose and lipid metabolism. ADIPOQ-binding activates a signaling cascade that leads to increased AMPK activity, and ultimately to increased fatty acid oxidation, increased glucose uptake and decreased gluconeogenesis. Besides, human ADP and rat ADP exist similarities in amino acid sequence with the identity of 83.2%. Thus a binding ELISA assay was conducted to detect the interaction of recombinant human ADIPOR1 and recombinant rat ADP. Briefly, ADIPOR1 were diluted serially in PBS, with 0.01% BSA (pH 7.4). Duplicate samples of 100 µl were then transferred to ADP-coated microtiter wells and incubated for 2h at 37°C. Wells were washed with PBST and incubated for 1h with anti-ADIPOR1 pAb, then aspirated and washed 3 times. After incubation with HRP labelled secondary antibody, wells were aspirated and washed 3 times. With the addition of substrate solution, wells were incubated 15-25 minutes at 37°C. Finally, add 50 µl stop solution to the wells and read at 450nm immediately. The binding activity of ADIPOR1 and ADP was in a dose dependent manner.

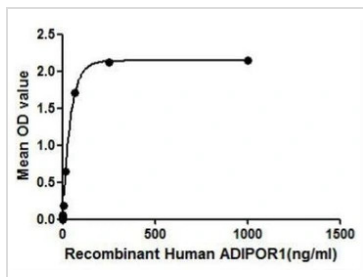
Observed MW (kDa) 63 kDa.

Properties

Form Lyophilized powder**Buffer** Reconstitute with 20mM Tris and 150mM NaCl to 0.1-1.0mg/ml. Do not vortex. Lyophilized from 20mM Tris, 150mM NaCl, 1mM EDTA, 1mM DTT, 0.01% SKL, 5% Trehalose.**Preservative** ProClin 300**Storage** For short-term storage (1-2 weeks), store at 4°C. For long-term storage, store at -20°C or below. After reconstitution, keep as concentrated solution. Avoid freeze-thaw cycles.**Region/Sequence** N-terminal His and GST-Tag; Met1~Gly136 (NP_001277482.1)**Expression System** E. coli**Purity** > 97%**Endotoxin** < 1 EU/µg**Conjugation** Unconjugated**Note** For laboratory use only. Not for any clinical, therapeutic, or diagnostic use in humans or animals. Not for animal or human consumption.

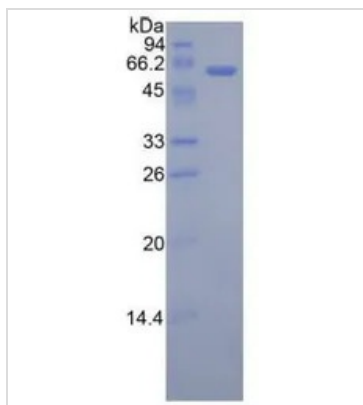
For full product information, images and publications, please visit our [website](#).

DATA IMAGES



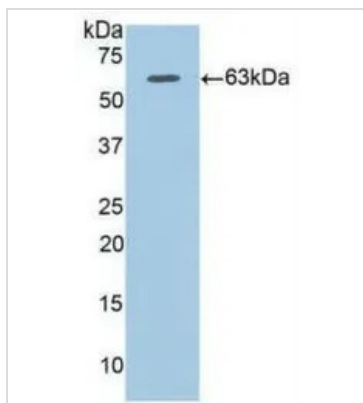
GTX00105-pro Functional Assay Image

Functional ELISA analysis of GTX00105-pro Human Adiponectin Receptor 1 protein which can bind immobilized ADP protein.



GTX00105-pro Image

SDS-PAGE analysis of GTX00105-pro Human Adiponectin Receptor 1 protein.



GTX00105-pro Image

WB analysis of GTX00105-pro Human Adiponectin Receptor 1 protein.



For full product information, images and publications, please visit our [website](#).