

## Human GAS6 protein, His tag (active)

Cat. No. GTX00106-pro

Application	Functional Assay
Species	Human

Package  
10 µg

## APPLICATION

## Application Note

Growth arrest-specific 6, also known as GAS6, is a gamma-carboxyglutamic acid (Gla) domain-containing protein thought to be involved in the stimulation of cell proliferation. It has been reported that both PC-3 and DU 145 human prostate cancer cell lines are stimulated to proliferate by Gas6, however, this proliferative response strictly correlates with the expression of the Axl receptor, being higher in DU 145 cells. To test the proliferative effect of Gas6, DU 145 cells were seeded into triplicate wells of 96-well plates at a density of 2000 cells/well and allowed to attach overnight, then the medium was replaced with serum-free standard DMEM prior to the addition of various concentrations of GAS6. After incubated for 72h, cells were observed by inverted microscope and cell proliferation was measured by Cell Counting Kit-8 (CCK-8). Briefly, 10 µl of CCK-8 solution was added to each well of the plate, then measure the absorbance at 450nm using a microplate reader after incubating the plate for 1-4 hours at 37°C. Cell proliferation of DU145 cells after incubation with GAS6 for 72h observed by inverted microscope.

Observed MW 24 kDa.

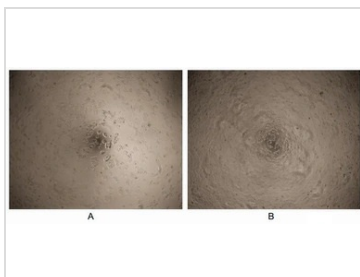
## PROPERTIES

Form	Lyophilized powder
Buffer	Reconstitute with 20mM Tris and 150mM NaCl to 0.1-1.0mg/ml. Do not vortex. Lyophilized from 20mM Tris, 150mM NaCl, 1mM EDTA, 1mM DTT, 0.01% SKL, 5% Trehalose.
Preservative	ProClin 300
Storage	For short-term storage (1-2 weeks), store at 4°C. For long-term storage, store at -20°C or below. After reconstitution, keep as concentrated solution. Avoid freeze-thaw cycles.
Region/Sequence	N-terminal His-Tag; Leu136~Phe311 (NP_000811.1)
Expression System	E. coli
Purity	> 90%
Endotoxin	< 1 EU/µg
Conjugation	Unconjugated
Note	For laboratory use only. Not for any clinical, therapeutic, or diagnostic use in humans or animals. Not for animal or human consumption.



For full product information, images and publications, please visit our [website](#).

DATA IMAGES

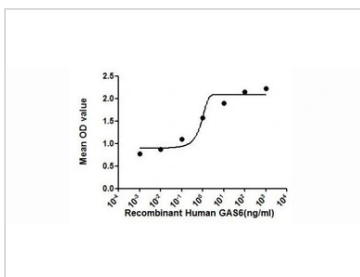


**GTX00106-pro Functional Assay Image**

Cell proliferation effect of GTX00106-pro Human GAS6 protein (active).

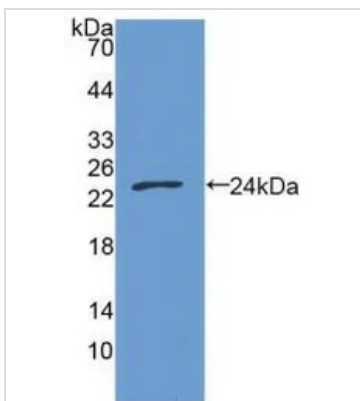
(A) Unstimulated DU145 cells cultured in serum-free DMEM for 72hrs.

(B) DU145 cells cultured in serum-free DMEM, stimulated with 100 ng/ml Gas6 for 72hrs.



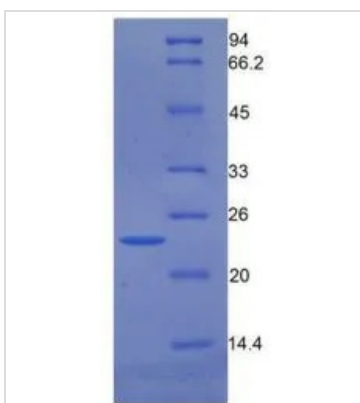
**GTX00106-pro Functional Assay Image**

The dose effect curve of GTX00106-pro Human GAS6 protein (active) on DU145 cells. After incubation of Human GAS6 protein (active) for 72 hrs, cell proliferation was measured by Cell Counting Kit-8 (CCK-8).



**GTX00106-pro Image**

WB analysis of GTX00106-pro Human GAS6 protein (active).



**GTX00106-pro Image**

SDS-PAGE analysis of GTX00106-pro Human GAS6 protein (active).



For full product information, images and publications, please visit our [website](https://www.genetex.com).