

Human MCP4 protein, His tag (active)

Cat. No. GTX00107-pro

Application Functional Assay

Species Human

Package

10 µg

APPLICATION

Application Note

CCL13 (C-C motif chemokine 13) is a chemotactic factor that attracts monocytes, lymphocytes, basophils and eosinophils, which belongs to the CC chemokine subfamily. It has been reported that CCL13 can induce chemotactic migration of THP-1 cells. Therefore, chemotaxis assay used 24-well microchemotaxis system was undertaken to detect the chemotactic effect of CCL13 on the human monocytic cell line THP-1. Briefly, THP-1 cells were seeded into the upper chambers (100 µl cell suspension, 1×10^6 cells/ml in RPMI-1640 with 0.5% FBS) and CCL13 (50 ng/ml and 100 ng/ml diluted separately in serum free RPMI-1640) was added in lower chamber with a polycarbonate filter (8µm pore size) used to separate the two compartments. After incubation at 37°C with 5% CO₂ for 3h, the filter was removed, then cells in low chamber were observed by inverted microscope at low magnification (×100) and the number of migrated cells were counted at high magnification (×400) randomly. CCL13 is able to induce migration of THP-1 cells.

Observed MW 13 kDa.

PROPERTIES

Form Lyophilized powder

Buffer Reconstitute with 20mM Tris and 150mM NaCl to 0.1-1.0mg/ml. Do not vortex. Lyophilized from 20mM Tris, 150mM NaCl, 1mM EDTA, 1mM DTT, 0.01% SKL, 5% Trehalose.

Preservative ProClin 300

Storage For short-term storage (1-2 weeks), store at 4°C. For long-term storage, store at -20°C or below. After reconstitution, keep as concentrated solution. Avoid freeze-thaw cycles.

Region/Sequence N-terminal His-Tag; Phe17~Thr98 (NP_005399.1)

Expression System E. coli

Purity > 95%

Endotoxin < 1 EU/µg

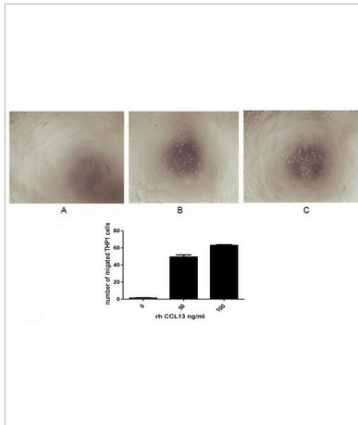
Conjugation Unconjugated

Note For laboratory use only. Not for any clinical, therapeutic, or diagnostic use in humans or animals. Not for animal or human consumption.



For full product information, images and publications, please visit our [website](#).

DATA IMAGES



GTX00107-pro Functional Assay Image

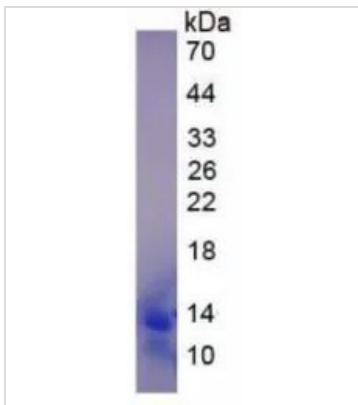
The chemotactic effect of GTX00107-pro Human MCP4 protein (active).

Upper: (A) THP-1 cells were seeded into the upper chambers and serum free RPMI-1640 without CCL13 was added in lower chamber, then cells in lower chamber were observed at low magnification ($\times 100$) after incubation for 3hrs.

(B) THP-1 cells were seeded into the upper chambers and 50 ng/ml CCL13 was added in lower chamber, then cells in lower chamber were observed at low magnification ($\times 100$) after incubation for 3hrs.

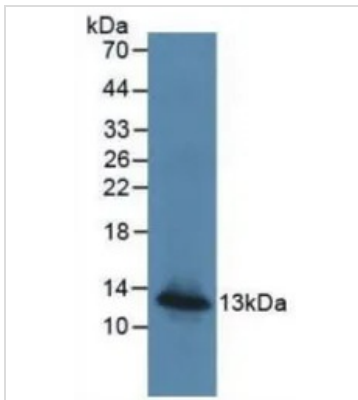
(C) THP-1 cells were seeded into the upper chambers and 100 ng/ml CCL13 was added in lower chamber, then cells in lower chamber were observed at low magnification ($\times 100$) after incubation for 3hrs.

Lower: The number of migrated cells were counted at high magnification ($\times 400$) randomly (five fields for each filter).



GTX00107-pro Image

SDS-PAGE analysis of GTX00107-pro Human MCP4 protein (active).



GTX00107-pro Image

WB analysis of GTX00107-pro Human MCP4 protein (active).



For full product information, images and publications, please visit our [website](https://www.genetex.com).