

## Human AMH protein, His tag

**Cat. No. GTX00109-pro****Applications** Functional Assay**Species** Human**Package**

10 µg

## Applications

**Application Note**

Anti-Müllerian hormone (AMH), also named Müllerian inhibiting substance (MIS) belongs to a tissue-specific TGF-beta superfamily growth factor. It can be expressed by male sertoli cells and postnatal testis, and ovarian granulosa cells of females postpartum. AMH expression is critical to sex differentiation at a specific time during fetal development, it appears to be tightly regulated by SF1, GATA factors, DAX1 and FSH. AMH signals through a characteristic receptor consisting of a type I and a type II receptor serine/threonine kinase. Especially the type II receptor is unique and specific receptor for AMH. Besides, Mothers Against Decapentaplegic Homolog 9 (Smad9) has been identified as an interactor of AMH, thus a binding ELISA assay was conducted to detect the interaction of recombinant human AMH and recombinant human (Smad9). Briefly, AMH were diluted serially in PBS, with 0.01% BSA (pH 7.4). Duplicate samples of 100 µl were then transferred to Smad9-coated microtiter wells and incubated for 2h at 37°C. Wells were washed with PBST and incubated for 1h with anti-AMH pAb, then aspirated and washed 3 times. After incubation with HRP labelled secondary antibody, wells were aspirated and washed 3 times. With the addition of substrate solution, wells were incubated 15-25 minutes at 37°C. Finally, add 50 µl stop solution to the wells and read at 450nm immediately. The binding activity of of AMH and Smad9 was in a dose dependent manner.

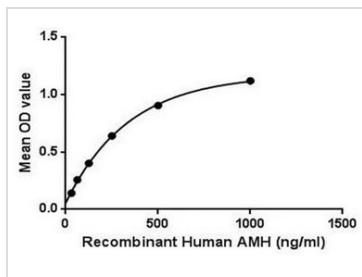
**Observed MW (kDa)** 14 kDa.

## Properties

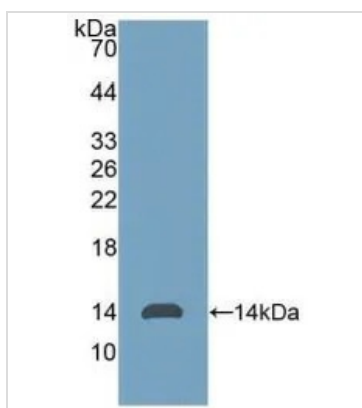
**Form** Lyophilized powder**Buffer** Reconstitute with 20mM Tris and 150mM NaCl to 0.1-1.0mg/ml. Do not vortex. Lyophilized from 20mM Tris, 150mM NaCl, 1mM EDTA, 1mM DTT, 0.01% SKL, 5% Trehalose.**Preservative** ProClin 300**Storage** For short-term storage (1-2 weeks), store at 4°C. For long-term storage, store at -20°C or below. After reconstitution, keep as concentrated solution. Avoid freeze-thaw cycles.**Region/Sequence** N-terminal His-Tag; confidential (NP\_000470.2)**Expression System** E. coli**Purity** > 95%**Endotoxin** < 1 EU/µg**Conjugation** Unconjugated**Note** For laboratory use only. Not for any clinical, therapeutic, or diagnostic use in humans or animals. Not for animal or human consumption.

For full product information, images and publications, please visit our [website](#).

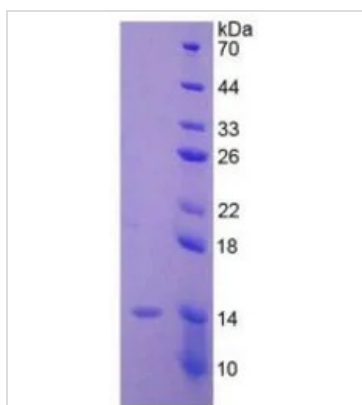
## DATA IMAGES

**GTX00109-pro Functional Assay Image**

Functional ELISA analysis of GTX00109-pro Human AMH protein which can bind immobilized Smad9 protein.

**GTX00109-pro Image**

WB analysis of GTX00109-pro Human AMH protein.

**GTX00109-pro Image**

SDS-PAGE analysis of GTX00109-pro Human AMH protein.



For full product information, images and publications, please visit our [website](#).