

Human VEGF165 protein, His tag

Cat. No. GTX00110-pro

Applications Functional Assay**Species** Human**Package**

10 µg

Applications

Application Note

Vascular endothelial growth factor 165 is one kind of isoforms of Vascular endothelial growth factor A (VEGFA). This protein is a glycosylated mitogen that specifically acts on endothelial cells and has various effects, including mediating increased vascular permeability, inducing angiogenesis, vasculogenesis and endothelial cell growth, promoting cell migration, and inhibiting apoptosis. Besides, Vascular Endothelial Growth Factor Receptor 1 (VEGFR1) has been identified as an interactor of VEGF165, thus a binding ELISA assay was conducted to detect the interaction of recombinant human VEGF165 and recombinant human VEGFR1. Briefly, VEGF165 were diluted serially in PBS, with 0.01% BSA (pH 7.4). Duplicate samples of 100 µl were then transferred to VEGFR1-coated microtiter wells and incubated for 2h at 37°C. Wells were washed with PBST and incubated for 1h with anti-VEGF165 pAb, then aspirated and washed 3 times. After incubation with HRP labelled secondary antibody, wells were aspirated and washed 3 times. With the addition of substrate solution, wells were incubated 15-25 minutes at 37°C. Finally, add 50 µl stop solution to the wells and read at 450nm immediately. The binding activity of VEGF165 and VEGFR1 was in a dose dependent manner.

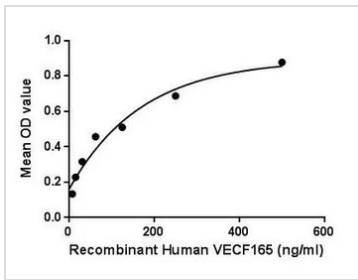
Observed MW (kDa) 19 kDa.

Properties

Form Lyophilized powder**Buffer** Reconstitute with 20mM Tris and 150mM NaCl to 0.1-1.0mg/ml. Do not vortex. Lyophilized from 20mM Tris, 150mM NaCl, 1mM EDTA, 1mM DTT, 0.01% SKL, 5% Trehalose.**Preservative** ProClin 300**Storage** For short-term storage (1-2 weeks), store at 4°C. For long-term storage, store at -20°C or below. After reconstitution, keep as concentrated solution. Avoid freeze-thaw cycles.**Region/Sequence** N-terminal His-Tag; Pro28~Arg191 (NP_001020537.2)**Expression System** E. coli**Purity** > 90%**Endotoxin** < 1 EU/µg**Conjugation** Unconjugated**Note** For laboratory use only. Not for any clinical, therapeutic, or diagnostic use in humans or animals. Not for animal or human consumption.

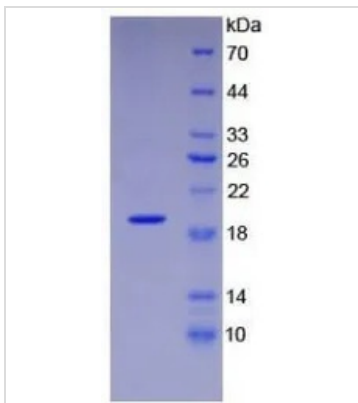
For full product information, images and publications, please visit our [website](#).

DATA IMAGES



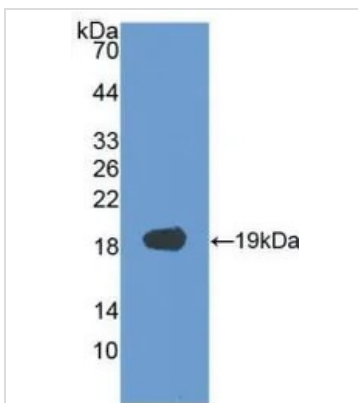
GTX00110-pro Functional Assay Image

Functional ELISA analysis of GTX00110-pro Human VEGF165 protein which can bind immobilized VEGFR1 protein.



GTX00110-pro Image

SDS-PAGE analysis of GTX00110-pro Human VEGF165 protein.



GTX00110-pro Image

WB analysis of GTX00110-pro Human VEGF165 protein.



For full product information, images and publications, please visit our [website](https://www.genetex.com).