

Human Granzyme M protein, His tag (active)

Cat. No. GTX00112-pro

Applications	Functional Assay
Species	Human

Package

10 µg

Applications

Application Note

GZMM (Granzyme M) is one of the neutral serine proteases, which is specifically expressed by NK cells and mediates a novel major and perforin-dependent cell death pathway. Granzyme M has been proven to targets α -Tubulin and disorganizes the microtubule network, besides, Ezrin has also been identified as a substrate of GZMM. Therefore, a catalytic assay was conducted to detect the protease activity of recombinant human GZMM using Hela cells lysates. Briefly, protein lysates were extracted from 2×10^7 Hela cells using Lysis Buffer, then incubated with normal or inactivated GZMM in 37°C for 4h. Samples were immunoblotted using Abs β -actin as control, and Ezrin to detect the enzyme activity. And the recombinant human GZMM cleaved Ezrin.

Observed MW (kDa)	26 kDa.
--------------------------	---------

Properties

Form	Lyophilized powder
Buffer	Reconstitute with 20mM Tris and 150mM NaCl to 0.1-1.0mg/ml. Do not vortex. Lyophilized from 20mM Tris, 150mM NaCl, 1mM EDTA, 1mM DTT, 0.01% SKL, 5% Trehalose.
Preservative	ProClin 300
Storage	For short-term storage (1-2 weeks), store at 4°C. For long-term storage, store at -20°C or below. After reconstitution, keep as concentrated solution. Avoid freeze-thaw cycles.
Region/Sequence	N-terminal His-Tag; Ile26~Ala257 (NP_001245280.1)
Expression System	E. coli
Purity	> 90%
Endotoxin	< 1 EU/µg
Conjugation	Unconjugated
Note	For laboratory use only. Not for any clinical, therapeutic, or diagnostic use in humans or animals. Not for animal or human consumption.



For full product information, images and publications, please visit our [website](#).

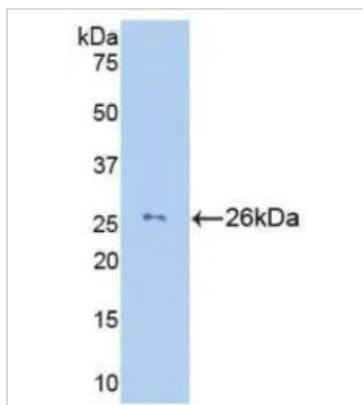
DATA IMAGES



GTX00112-pro Functional Assay Image

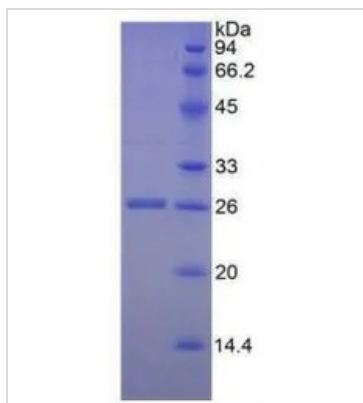
Catalytic assay on HeLa cells treated by normal or inactivated GTX00112-pro Human Granzyme M protein (active) in 37°C for 4hrs. And Human Granzyme M protein (active) cleaved Ezrin.

Recombinant protein concentrations: 4 μM



GTX00112-pro Image

WB analysis of GTX00112-pro Human Granzyme M protein (active).



GTX00112-pro Image

SDS-PAGE analysis of GTX00112-pro Human Granzyme M protein (active).



For full product information, images and publications, please visit our [website](#).