

Human PKR protein, His tag

Cat. No. GTX00113-pro

Applications Functional Assay**Species** Human**Package**

10 µg

Applications

Application Note

Protein Kinase R (PKR) is activated by double-stranded RNA (dsRNA), the synthesis of which is caused virally. PKR can also be activated by the protein PACT or by heparin. It plays a key role in the innate immune response to viral infection and is also involved in the regulation of signal transduction, apoptosis, cell proliferation and differentiation. Besides, Cyclin Dependent Kinase 1 (CDK1) has been identified as an interactor of PKR, thus a binding ELISA assay was conducted to detect the interaction of recombinant human PKR and recombinant human CDK1. Briefly, PKR were diluted serially in PBS, with 0.01% BSA (pH 7.4). Duplicate samples of 100 µl were then transferred to CDK1-coated microtiter wells and incubated for 2h at 37°C. Wells were washed with PBST and incubated for 1h with anti-PKR pAb, then aspirated and washed 3 times. After incubation with HRP labelled secondary antibody, wells were aspirated and washed 3 times. With the addition of substrate solution, wells were incubated 15-25 minutes at 37°C. Finally, add 50 µl stop solution to the wells and read at 450nm immediately. The binding activity of of PKR and CDK1 was in a dose dependent manner.

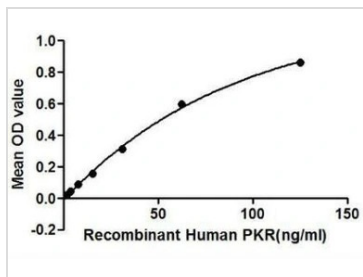
Observed MW (kDa) 32 kDa.

Properties

Form Lyophilized powder**Buffer** Reconstitute with 20mM Tris and 150mM NaCl to 0.1-1.0mg/ml. Do not vortex. Lyophilized from 20mM Tris, 150mM NaCl, 1mM EDTA, 1mM DTT, 0.01% SKL, 5% Trehalose.**Preservative** ProClin 300**Storage** For short-term storage (1-2 weeks), store at 4°C. For long-term storage, store at -20°C or below. After reconstitution, keep as concentrated solution. Avoid freeze-thaw cycles.**Region/Sequence** N-terminal His-Tag; Ser224~Ile502 (NP_001129123.1)**Expression System** E. coli**Purity** > 80%**Endotoxin** < 1 EU/µg**Conjugation** Unconjugated**Note** For laboratory use only. Not for any clinical, therapeutic, or diagnostic use in humans or animals. Not for animal or human consumption.

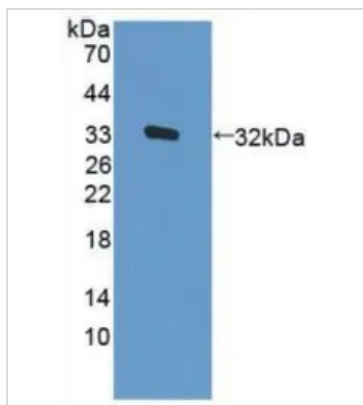
For full product information, images and publications, please visit our [website](#).

DATA IMAGES



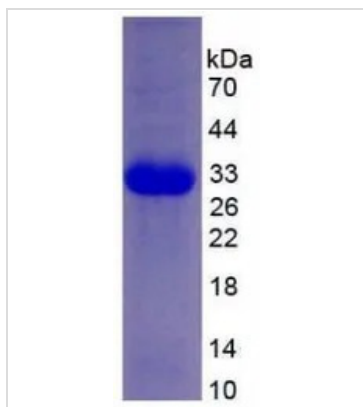
GTX00113-pro Functional Assay Image

Functional ELISA analysis of GTX00113-pro Human PKR protein which can bind immobilized CDK1 protein.



GTX00113-pro Image

WB analysis of GTX00113-pro Human PKR protein.



GTX00113-pro Image

SDS-PAGE analysis of GTX00113-pro Human PKR protein.



For full product information, images and publications, please visit our [website](#).