

Human EGF protein, His tag (active)

Cat. No. GTX00114-pro

Applications Functional Assay**Species** Human**Package**

10 µg

Applications

Application Note

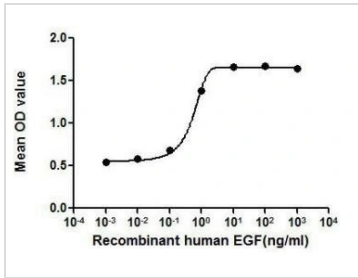
Epidermal growth factor (EGF) is a growth factor that stimulates cell growth, proliferation, and differentiation by binding to its receptor EGFR. To test the effect of EGF on cell proliferation of 3T3 fibroblasts, 3T3 cells were seeded into triplicate wells of 96-well plates at a density of 2000 cells/well and allowed to attach overnight, then the medium was replaced with serum-free standard DMEM prior to the addition of various concentrations of EGF. After incubated for 72h, cells were observed by inverted microscope and cell proliferation was measured by Cell Counting Kit-8 (CCK-8). Briefly, 10 µl of CCK-8 solution was added to each well of the plate, then measure the absorbance at 450nm using a microplate reader after incubating the plate for 1-4 hours at 37°C. Cell proliferation of 3T3 cells after incubation with EGF for 72h observed by inverted microscope.

Observed MW (kDa) 10 kDa.

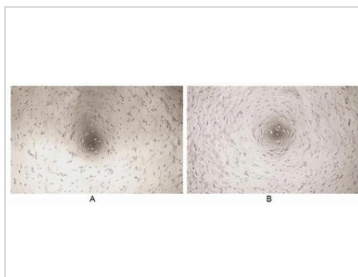
Properties

Form Lyophilized powder**Buffer** Reconstitute with 20mM Tris and 150mM NaCl to 0.1-1.0mg/ml. Do not vortex. Lyophilized from 20mM Tris, 150mM NaCl, 1mM EDTA, 1mM DTT, 0.01% SKL, 5% Trehalose.**Preservative** ProClin 300**Storage** For short-term storage (1-2 weeks), store at 4°C. For long-term storage, store at -20°C or below. After reconstitution, keep as concentrated solution. Avoid freeze-thaw cycles.**Region/Sequence** N-terminal His-Tag; Asn971~Arg1023 (NP_001171601.1)**Expression System** E. coli**Purity** > 90%**Endotoxin** < 1 EU/µg**Conjugation** Unconjugated**Note** For laboratory use only. Not for any clinical, therapeutic, or diagnostic use in humans or animals. Not for animal or human consumption.

For full product information, images and publications, please visit our [website](#).

DATA IMAGES

GTX00114-pro Functional Assay Image

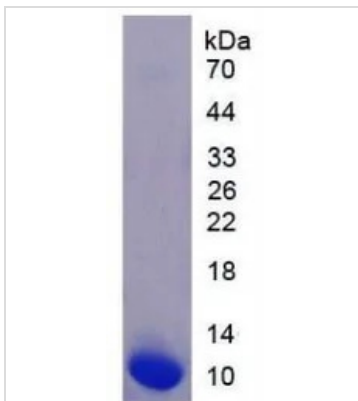
The dose effect curve of GTX00114-pro Human EGF protein (active) on 3T3 cells. After incubation of Human EGF protein (active) for 72 hrs, cell proliferation was measured by Cell Counting Kit-8 (CCK-8).


GTX00114-pro Functional Assay Image

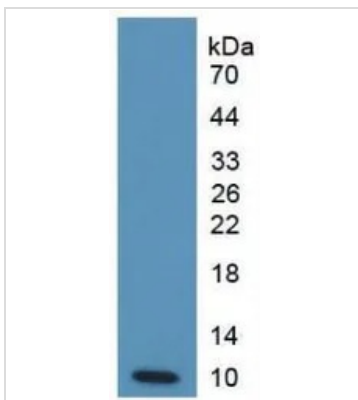
Cell proliferation effect of GTX00114-pro Human EGF protein (active).

(A) Unstimulated 3T3 cells cultured in serum-free DMEM for 72hrs.

(B) 3T3 cells cultured in DMEM, stimulated with 1 ng/ml EGF for 72hrs.


GTX00114-pro Image

SDS-PAGE analysis of GTX00114-pro Human EGF protein (active).


GTX00114-pro Image

WB analysis of GTX00114-pro Human EGF protein (active).



For full product information, images and publications, please visit our [website](https://www.genetex.com).