

Human IL1 beta protein, His tag (active)

Cat. No. GTX00115-pro

Applications Functional Assay**Species** Human**Package**

10 µg

Applications

Application Note

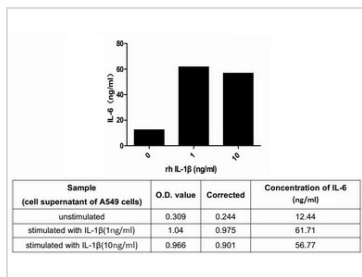
Interleukin-1 beta belongs to the interleukin 1 cytokine family, which plays a critical role in inflammation, immunity, antiviral responses, and a variety of diseases. It has been reported that IL-1 β -induced IL-6 production is mediated by both PI3K and IRAK4 in A549 cells. To test the bioactivity of IL-1 β , A549 cells were seeded into 24-well plate at a density of 1×10^5 cells/ml, and allowed to attach overnight before treated with or without certain concentrations (1 ng/ml, 10 ng/ml) of IL-1 β for 4h. IL-6 levels in the cell supernatant were determined by ELISA that IL-6 increased significantly after stimulated with IL-1 β .

Observed MW (kDa) 22 kDa.

Properties

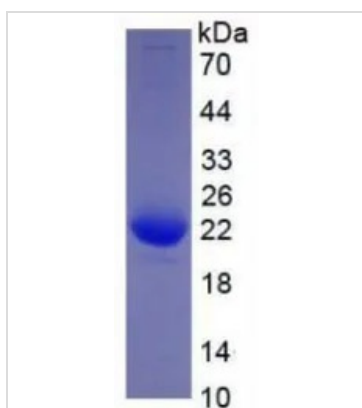
Form Lyophilized powder**Buffer** Reconstitute with 20mM Tris and 150mM NaCl to 0.1-1.0mg/ml. Do not vortex. Lyophilized from 20mM Tris, 150mM NaCl, 1mM EDTA, 1mM DTT, 0.01% SKL, 5% Trehalose.**Preservative** ProClin 300**Storage** For short-term storage (1-2 weeks), store at 4°C. For long-term storage, store at -20°C or below. After reconstitution, keep as concentrated solution. Avoid freeze-thaw cycles.**Region/Sequence** N-terminal His-Tag; Ala117~Ser269 (NP_000567.1)**Expression System** HEK293 cells**Purity** > 95%**Endotoxin** < 1 EU/µg**Conjugation** Unconjugated**Note** For laboratory use only. Not for any clinical, therapeutic, or diagnostic use in humans or animals. Not for animal or human consumption.

For full product information, images and publications, please visit our [website](#).

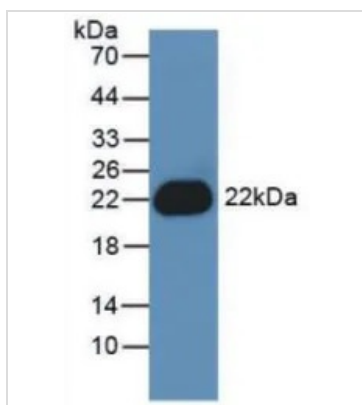
DATA IMAGES

GTX00115-pro Functional Assay Image

ELISA detection of secreted IL-6 protein activation from A549 cells induced by GTX00115-pro Human IL1 beta protein (active) for 4hrs.

Recombinant protein concentrations: 1, and 10 ng/ml.


GTX00115-pro Image

SDS-PAGE analysis of GTX00115-pro Human IL1 beta protein (active).


GTX00115-pro Image

WB analysis of GTX00115-pro Human IL1 beta protein (active).



For full product information, images and publications, please visit our [website](https://www.genetex.com).