

Human IL1 beta protein, His tag (active)

Cat. No. GTX00116-pro**Applications** Functional Assay**Species** Human**Package**

10 µg

Applications

Application Note

IL-1 β (Interleukin-1 beta) is a proinflammatory and immunoregulatory cytokine involved in a variety of cellular activities. It is produced by activated macrophages as a proprotein, and then proteolytically processed to an active form. It has been reported that IL-1 β -induced IL-6 production is mediated by both PI3K and IRAK4 in A549 cells. To detect the bioactivity of IL-1 β , A549 cells were seeded into 24-well plate at a density of 1×10^5 cells/ml, and allowed to attach overnight before treated with or without certain concentrations (1 ng/ml, 10 ng/ml) of IL1- β for 4h and IL-6 levels in the cell supernatant were determined by ELISA. IL-6 levels in the cell supernatant of A549 cells increased significantly after stimulated with IL1- β .

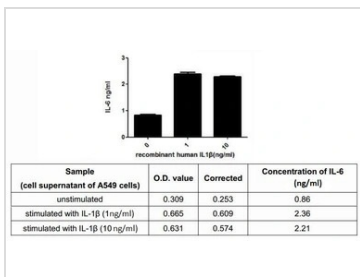
Observed MW (kDa) 21 kDa.

Properties

Form Lyophilized powder**Buffer** Reconstitute with 20mM Tris and 150mM NaCl to 0.1-1.0mg/ml. Do not vortex. Lyophilized from 20mM Tris, 150mM NaCl, 1mM EDTA, 1mM DTT, 0.01% SKL, 5% Trehalose.**Preservative** ProClin 300**Storage** For short-term storage (1-2 weeks), store at 4°C. For long-term storage, store at -20°C or below. After reconstitution, keep as concentrated solution. Avoid freeze-thaw cycles.**Region/Sequence** N-terminal His-Tag; Ala117~Ser269 (NP_000567.1)**Expression System** E. coli**Purity** > 95%**Endotoxin** < 1 EU/µg**Conjugation** Unconjugated**Note** For laboratory use only. Not for any clinical, therapeutic, or diagnostic use in humans or animals. Not for animal or human consumption.

For full product information, images and publications, please visit our [website](#).

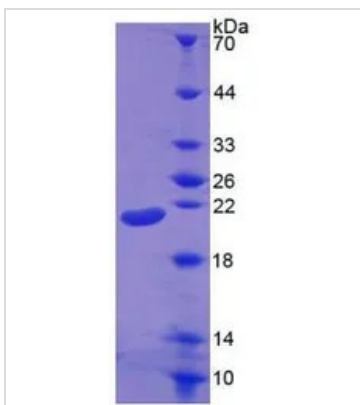
DATA IMAGES



GTX00116-pro Functional Assay Image

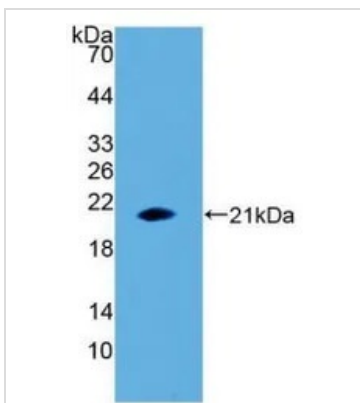
ELISA detection of secreted IL-6 protein activation from A549 cells induced by GTX00116-pro Human IL1 beta protein (active) for 4hrs.

Recombinant protein concentrations: 1, and 10 ng/ml.



GTX00116-pro Image

SDS-PAGE analysis of GTX00116-pro Human IL1 beta protein (active).



GTX00116-pro Image

WB analysis of GTX00116-pro Human IL1 beta protein (active).



For full product information, images and publications, please visit our [website](#).