

Human MASP2 protein, His tag

Cat. No. GTX00122-pro

Application	Functional Assay
Species	Human

Package
10 µg

APPLICATION

Application Note

MASP2 (Mannan-binding lectin serine protease 2) is a serum protease that plays an important role in the activation of the complement system via mannose-binding lectin. The preproprotein of MASP2 is proteolytically processed to generate A and B chains that heterodimerize to form the mature protease, which is able to associate with MBL2. Thus, a functional binding ELISA assay was constructed to detect the association of rhMASP2 with MBL2. Briefly, rhMASP-2 were diluted serially in 10mM Tris-HCl, 1M NaCl, 5mM CaCl₂, and 0.05% Triton X-100 (pH 7.4). Duplicate samples of 100 µl were then transferred to MBL2-coated microtiter wells and incubated for 2h at 37°C. Wells were washed with PBST and incubated for 1h with anti-MASP-2 pAb, then aspirated and washed 3 times. After incubation with HRP labeled secondary antibody, wells were aspirated and washed 3 times. With the addition of substrate solution, wells were incubated for 15-25 minutes at 37°C. Finally, add 50 µl stop solution to the wells and read at 450nm immediately. The binding activity of MASP2 with MBL2 was in a dose dependent manner.

Observed MW 27 kDa.

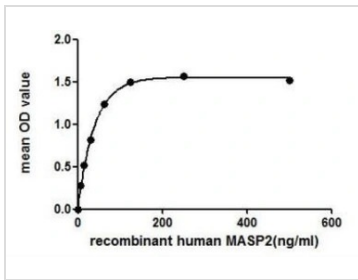
PROPERTIES

Form	Lyophilized powder
Buffer	Reconstitute with 20mM Tris and 150mM NaCl to 0.1-1.0mg/ml. Do not vortex. Lyophilized from 20mM Tris, 150mM NaCl, 1mM EDTA, 1mM DTT, 0.01% SKL, 5% Trehalose.
Preservative	ProClin 300
Storage	For short-term storage (1-2 weeks), store at 4°C. For long-term storage, store at -20°C or below. After reconstitution, keep as concentrated solution. Avoid freeze-thaw cycles.
Region/Sequence	N-terminal His-Tag; Ile445~Ile683 (NP_006601.2)
Expression System	E. coli
Purity	> 97%
Endotoxin	< 1 EU/µg
Conjugation	Unconjugated
Note	For laboratory use only. Not for any clinical, therapeutic, or diagnostic use in humans or animals. Not for animal or human consumption.



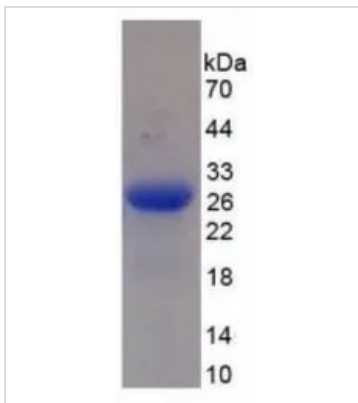
For full product information, images and publications, please visit our [website](#).

DATA IMAGES



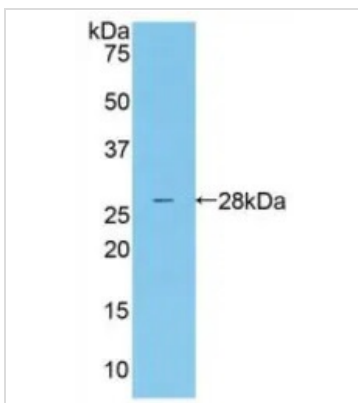
GTX00122-pro Functional Assay Image

Functional ELISA analysis of GTX00122-pro Human MASP2 protein which can bind immobilized MBL2 protein.



GTX00122-pro Image

SDS-PAGE analysis of GTX00122-pro Human MASP2 protein.



GTX00122-pro Image

WB analysis of GTX00122-pro Human MASP2 protein.



For full product information, images and publications, please visit our [website](https://www.genetex.com).