

## Human Osteopontin protein, His tag (active)

**Cat. No. GTX00123-pro****Applications** Functional Assay**Species** Human**Package**

10 µg

## Applications

**Application Note**

Osteopontin (OPN), a multifunctional phosphorylated glycoprotein, plays an important role in neutrophil recruitment and was found to induce the expression of proinflammatory chemokines including MCP-1 and MIP-1 $\beta$  which would promote migration and recruitment of inflammatory cells. It has been reported that OPN induces MCP-1 expression through the NF-kappa B pathways in MCF-7 breast cancer cell line. Briefly, MCF-7 cells were seeded overnight at a density of  $1 \times 10^5$  cells/ml, and treated with or without OPN(100 ng/ml and 200 ng/ml) for 24h and MCP-1 levels in the cell supernatant were determined by ELISA. MCP-1 levels in the cell supernatant of MCF-7 cells increased significantly after stimulated with OPN.

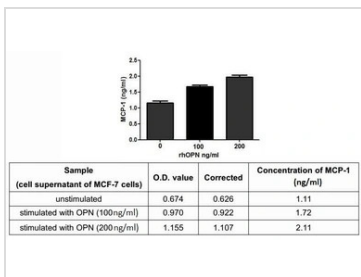
**Observed MW (kDa)** 60 kDa.

## Properties

**Form** Lyophilized powder**Buffer** Reconstitute with 20mM Tris and 150mM NaCl to 0.1-1.0mg/ml. Do not vortex. Lyophilized from 20mM Tris, 150mM NaCl, 1mM EDTA, 1mM DTT, 0.01% SKL, 5% Trehalose.**Preservative** ProClin 300**Storage** For short-term storage (1-2 weeks), store at 4°C. For long-term storage, store at -20°C or below. After reconstitution, keep as concentrated solution. Avoid freeze-thaw cycles.**Region/Sequence** N-terminal His-Tag; Ile17~Asn287 (NP\_000573.1)**Expression System** HEK293 cells**Purity** > 95%**Endotoxin** < 1 EU/µg**Conjugation** Unconjugated**Note** For laboratory use only. Not for any clinical, therapeutic, or diagnostic use in humans or animals. Not for animal or human consumption.

For full product information, images and publications, please visit our [website](#).

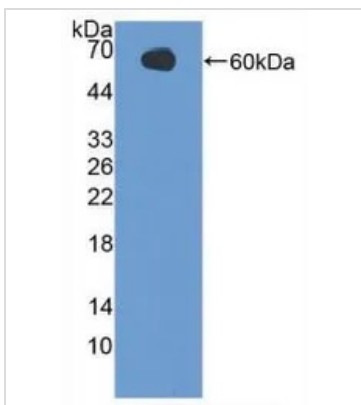
DATA IMAGES



**GTX00123-pro Functional Assay Image**

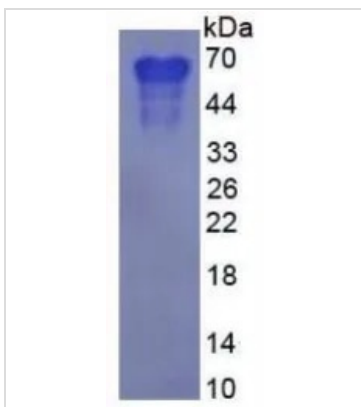
ELISA detection of secreted MCP-1 protein activation from MCF-7 cells induced by GTX00123-pro Human Osteopontin protein (active) for 24hrs.

Recombinant protein concentrations: 100, and 200 ng/ml.



**GTX00123-pro Image**

WB analysis of GTX00123-pro Human Osteopontin protein (active).



**GTX00123-pro Image**

SDS-PAGE analysis of GTX00123-pro Human Osteopontin protein (active).



For full product information, images and publications, please visit our [website](#).