

## Human GSTP1 protein, His tag

Cat. No. GTX00125-pro

**Applications** Functional Assay**Species** Human**Package**

10 µg

## Applications

## Application Note

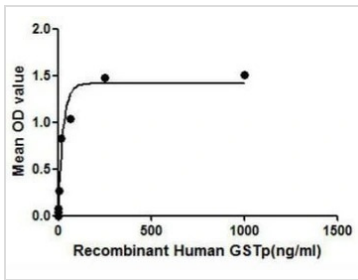
GSTp (Glutathione S-transferase P) is an enzyme that plays an important role in detoxification by catalyzing the conjugation of many hydrophobic and electrophilic compounds with reduced glutathione. GSTP1 is identified as a CDK5 (Cyclin dependent kinase-5) regulatory protein, and is thought to regulate negatively CDK5 activity via p25/p35 translocation. Thus a binding ELISA assay was conducted to detect the interaction of recombinant human GSTp and recombinant human CDK5. Briefly, GSTp were diluted serially in PBS, with 0.01% BSA (pH 7.4). Duplicate samples of 100 µl were then transferred to CDK5-coated microtiter wells and incubated for 2h at 37°C. Wells were washed with PBST and incubated for 1h with anti-GSTp pAb, then aspirated and washed 3 times. After incubation with HRP labelled secondary antibody, wells were aspirated and washed 3 times. With the addition of substrate solution, wells were incubated 15-25 minutes at 37°C. Finally, add 50 µl stop solution to the wells and read at 450nm immediately. The binding activity of GSTp and CDK5 was in a dose dependent manner.

**Observed MW (kDa)** 25 kDa.

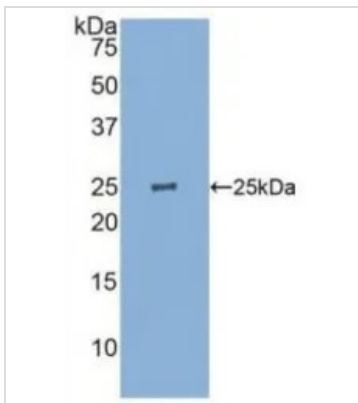
## Properties

**Form** Lyophilized powder**Buffer** Reconstitute with 20mM Tris and 150mM NaCl to 0.1-1.0mg/ml. Do not vortex. Lyophilized from 20mM Tris, 150mM NaCl, 1mM EDTA, 1mM DTT, 0.01% SKL, 5% Trehalose.**Preservative** ProClin 300**Storage** For short-term storage (1-2 weeks), store at 4°C. For long-term storage, store at -20°C or below. After reconstitution, keep as concentrated solution. Avoid freeze-thaw cycles.**Region/Sequence** Full length protein, N-terminal His-Tag; Met1~Gln210 (NP\_000843.1)**Expression System** E. coli**Purity** > 95%**Endotoxin** < 1 EU/µg**Conjugation** Unconjugated**Note** For laboratory use only. Not for any clinical, therapeutic, or diagnostic use in humans or animals. Not for animal or human consumption.

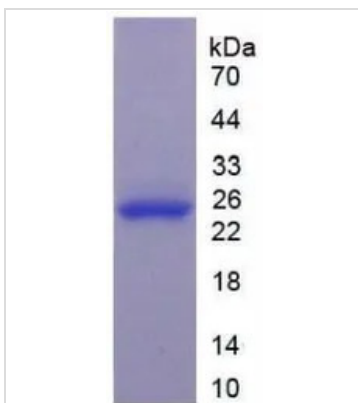
For full product information, images and publications, please visit our [website](#).

**DATA IMAGES**

**GTX00125-pro Functional Assay Image**

Functional ELISA analysis of GTX00125-pro Human GSTP1 protein which can bind immobilized CDK5 protein.


**GTX00125-pro Image**

WB analysis of GTX00125-pro Human GSTP1 protein.


**GTX00125-pro Image**

SDS-PAGE analysis of GTX00125-pro Human GSTP1 protein.



For full product information, images and publications, please visit our [website](https://www.genetex.com).