

Human MBL2 protein, His and GST tag

Cat. No. GTX00127-pro**Applications** Functional Assay**Species** Human**Package**

10 µg

Applications

Application Note

MBL2 (Mannose-binding protein C) is a calcium-dependent lectin involved in innate immune defense, which binds mannose, fucose and N-acetylglucosamine on different microorganisms, therefore results in activation of the lectin pathway of the complement system. It has been proven that MASP-2 (Mannan-binding lectin serine protease 2) forms complexes with the pattern recognition molecules MBL2, triggers the activation of the complement system. Thus, a functional binding ELISA assay was constructed to detect the association of rhMBL2 with MASP2. Briefly, rhMBL2 were diluted serially in 10mM Tris-HCl, 1M NaCl, 5mM CaCl₂, and 0.05% Triton X-100 (pH 7.4). Duplicate samples of 100 µl were then transferred to MASP2-coated microtiter wells and incubated for 2h at 37°C. Wells were washed with PBST and incubated for 1h with anti-MBL2 mAb, then aspirated and washed 3 times. After incubation with HRP labeled secondary antibody, wells were aspirated and washed 3 times. With the addition of substrate solution, wells were incubated for 15-25 minutes at 37°C. Finally, add 50 µl stop solution to the wells and read at 450nm immediately. The binding activity of MBL2 with MASP2 was in a dose dependent manner.

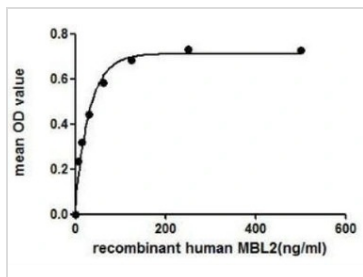
Observed MW (kDa) 43 kDa.

Properties

Form Lyophilized powder**Buffer** Reconstitute with 20mM Tris and 150mM NaCl to 0.1-1.0mg/ml. Do not vortex. Lyophilized from 20mM Tris, 150mM NaCl, 1mM EDTA, 1mM DTT, 0.01% SKL, 5% Trehalose.**Preservative** ProClin 300**Storage** For short-term storage (1-2 weeks), store at 4°C. For long-term storage, store at -20°C or below. After reconstitution, keep as concentrated solution. Avoid freeze-thaw cycles.**Region/Sequence** N-terminal His and GST-Tag; Leu130~Ile248 (NP_000233.1)**Expression System** E. coli**Purity** > 97%**Endotoxin** < 1 EU/µg**Conjugation** Unconjugated**Note** For laboratory use only. Not for any clinical, therapeutic, or diagnostic use in humans or animals. Not for animal or human consumption.

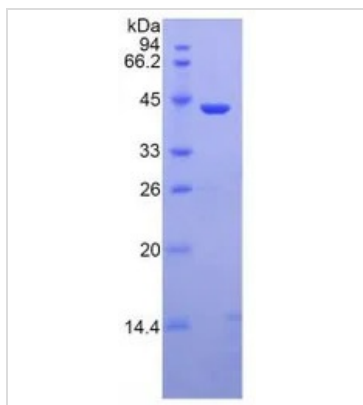
For full product information, images and publications, please visit our [website](#).

DATA IMAGES



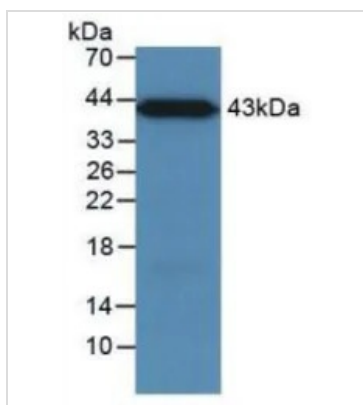
GTX00127-pro Functional Assay Image

Functional ELISA analysis of GTX00127-pro Human MBL2 protein which can bind immobilized MASP2 protein.



GTX00127-pro Image

SDS-PAGE analysis of GTX00127-pro Human MBL2 protein.



GTX00127-pro Image

WB analysis of GTX00127-pro Human MBL2 protein.



For full product information, images and publications, please visit our [website](#).