

## Human NEU1 protein, His tag

**Cat. No. GTX00130-pro****Applications** Functional Assay**Species** Human**Package**

10 µg

## Applications

**Application Note**

NEU (Sialidase-1) is an enzyme that catalyzes the removal of sialic acid (N-acetylneuraminic acid) moieties from glycoproteins and glycolipids. In the lysosome, this enzyme is part of a heterotrimeric complex together with beta-galactosidase and cathepsin A (CTSA). Thus a binding ELISA assay was conducted to detect the interaction of recombinant human NEU and recombinant human CTSA. Briefly, NEU were diluted serially in PBS, with 0.01% BSA (pH 7.4). Duplicate samples of 100 µl were then transferred to CTSA-coated microtiter wells and incubated for 2h at 37°C. Wells were washed with PBST and incubated for 1h with anti-NEU pAb, then aspirated and washed 3 times. After incubation with HRP labelled secondary antibody, wells were aspirated and washed 3 times. With the addition of substrate solution, wells were incubated 15-25 minutes at 37°C. Finally, add 50 µl stop solution to the wells and read at 450nm immediately. The binding activity of NEU and CTSA was in a dose dependent manner.

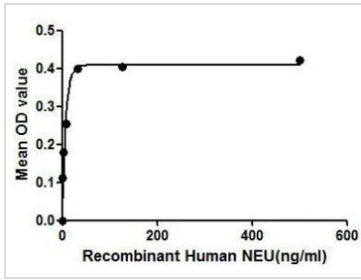
**Observed MW (kDa)** 46 kDa.

## Properties

**Form** Lyophilized powder**Buffer** Reconstitute with 20mM Tris and 150mM NaCl to 0.1-1.0mg/ml. Do not vortex. Lyophilized from 20mM Tris, 150mM NaCl, 1mM EDTA, 1mM DTT, 0.01% SKL, 5% Trehalose.**Preservative** ProClin 300**Storage** For short-term storage (1-2 weeks), store at 4°C. For long-term storage, store at -20°C or below. After reconstitution, keep as concentrated solution. Avoid freeze-thaw cycles.**Region/Sequence** N-terminal His-Tag; Ala47~Leu415 (NP\_000425.1)**Expression System** HEK293 cells**Purity** > 97%**Endotoxin** < 1 EU/µg**Conjugation** Unconjugated**Note** For laboratory use only. Not for any clinical, therapeutic, or diagnostic use in humans or animals. Not for animal or human consumption.

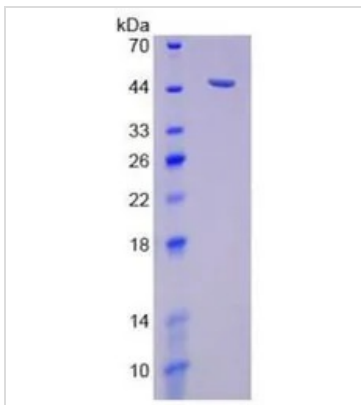
For full product information, images and publications, please visit our [website](#).

DATA IMAGES



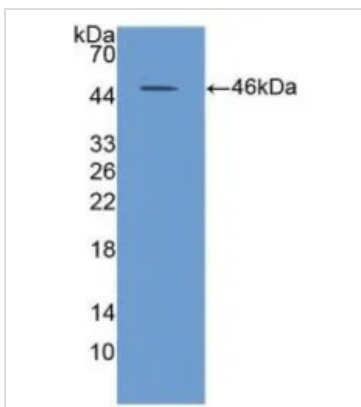
**GTX00130-pro Functional Assay Image**

Functional ELISA analysis of GTX00130-pro Human NEU1 protein which can bind immobilized CTSA protein.



**GTX00130-pro Image**

SDS-PAGE analysis of GTX00130-pro Human NEU1 protein.



**GTX00130-pro Image**

WB analysis of GTX00130-pro Human NEU1 protein.



For full product information, images and publications, please visit our [website](#).