

## Human IL10 Receptor beta protein, His tag

**Cat. No. GTX00131-pro****Applications** Functional Assay**Species** Human**References** ( 1 )**Package**

10 µg

## Applications

**Application Note**

IL10Rb (Interleukin-10 receptor subunit beta) belongs to the cytokine receptor family. It is an accessory chain essential for the active interleukin 10 receptor complex, which is a cell surface receptor required for the activation of several cytokines, including IL10. Thus, a binding ELISA assay was conducted to detect the interaction of IL10Rb and IL10. Briefly, recombinant human IL10RB were diluted serially in PBS, with 0.01% BSA (pH 7.4). Duplicate samples of 100 µl were then transferred to IL10-coated microtiter wells and incubated for 2h at 37°C. Wells were washed with PBST and incubated for 1h with anti-IL10Rb pAb, then aspirated and washed 3 times. After incubation with HRP labelled secondary antibody, wells were aspirated and washed 3 times. With the addition of substrate solution, wells were incubated 15-25 minutes at 37°C. Finally, add 50 µl stop solution to the wells and read at 450nm immediately. The binding activity of IL10Rb and IL10 was in a dose dependent manner.

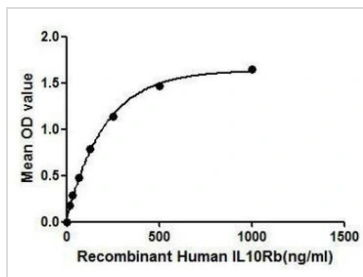
**Observed MW (kDa)** 18 kDa.

## Properties

**Form** Lyophilized powder**Buffer** Reconstitute with 10mM PBS (pH7.4) to 0.1-1.0mg/ml. Do not vortex. Lyophilized from PBS (pH7.4), 0.01% SKL, 1mM DTT, 5% Trehalose.**Preservative** ProClin 300**Storage** For short-term storage (1-2 weeks), store at 4°C. For long-term storage, store at -20°C or below. After reconstitution, keep as concentrated solution. Avoid freeze-thaw cycles.**Region/Sequence** N-terminal His-Tag; Leu87~Ala243 (NP\_000619.3)**Expression System** E. coli**Purity** > 97%**Endotoxin** < 1 EU/µg**Conjugation** Unconjugated**Note** For laboratory use only. Not for any clinical, therapeutic, or diagnostic use in humans or animals. Not for animal or human consumption.

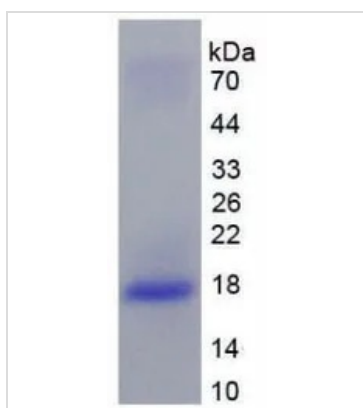
For full product information, images and publications, please visit our [website](#).

DATA IMAGES



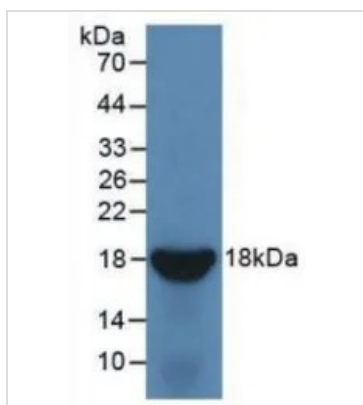
**GTX00131-pro Functional Assay Image**

Functional ELISA analysis of GTX00131-pro Human IL10 Receptor beta protein which can bind immobilized IL10 protein.



**GTX00131-pro Image**

SDS-PAGE analysis of GTX00131-pro Human IL10 Receptor beta protein.



**GTX00131-pro Image**

WB analysis of GTX00131-pro Human IL10 Receptor beta protein.



For full product information, images and publications, please visit our [website](#).