

## Human IL24 protein, His tag (active)

Cat. No. GTX00138-pro

Application	Functional Assay
Species	Human

Package  
10 µg

## APPLICATION

## Application Note

IL24 (interleukin 24) is a cytokine that belongs to IL10 family. This protein can induce apoptosis selectively in various cancer cells, including ECV304. Thus, inhibition of cell proliferation assay of IL24 was conducted using ECV-304 cells. Briefly, ECV-304 cells were seeded into triplicate wells of 96-well plates at a density of 2000 cells/well and allowed to attach overnight, then the medium was replaced with serum-free standard RPMI-1640 prior to the addition of various concentrations of IL24. After incubated for 48h, cells were observed by inverted microscope and cell proliferation was measured by Cell Counting Kit-8 (CCK-8). Briefly, 10 µl of CCK-8 solution was added to each well of the plate, then the absorbance at 450nm was measured using a microplate reader after incubating the plate for 1-4 hours at 37°C. Inhibition of ECV-304 cells proliferation after incubation with IL24 for 48h observed by inverted microscope. Cell viability was assessed by CCK-8 (Cell Counting Kit-8) assay after incubation with various concentrations of IL24 for 48h. The mean OD value of ECV-304 assessed by CCK-8 that IL24 significantly decreased cell viability of ECV-304 cells.

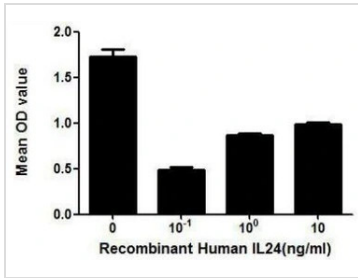
Observed MW 18 kDa.

## PROPERTIES

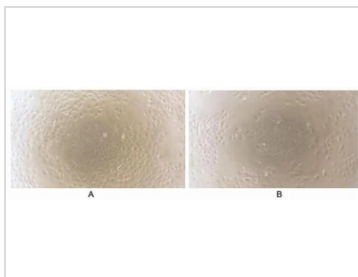
Form	Lyophilized powder
Buffer	Reconstitute with 20mM Tris and 150mM NaCl to 0.1-1.0mg/ml. Do not vortex. Lyophilized from 20mM Tris, 150mM NaCl, 1mM EDTA, 1mM DTT, 0.01% SKL, 5% Trehalose.
Preservative	ProClin 300
Storage	For short-term storage (1-2 weeks), store at 4°C. For long-term storage, store at -20°C or below. After reconstitution, keep as concentrated solution. Avoid freeze-thaw cycles.
Region/Sequence	N-terminal His-Tag; Gly51~Leu206 (NP_001172085.1)
Expression System	E. coli
Purity	> 90%
Endotoxin	< 1 EU/µg
Conjugation	Unconjugated
Note	For laboratory use only. Not for any clinical, therapeutic, or diagnostic use in humans or animals. Not for animal or human consumption.



For full product information, images and publications, please visit our [website](#).

**DATA IMAGES**

**GTX00138-pro Functional Assay Image**

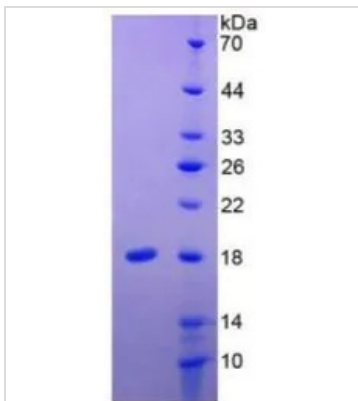
The inhibitory effect of GTX00138-pro Human IL24 protein (active) on the cell proliferation of ECV-304 cells. After incubation of Human IL24 protein (active) for 48 hrs, cell viability was measured by Cell Counting Kit-8 (CCK-8).


**GTX00138-pro Functional Assay Image**

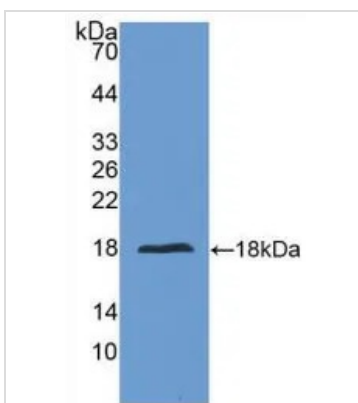
Cell proliferation effect of GTX00138-pro Human IL24 protein (active). Cell viability was measured by Cell Counting Kit-8 (CCK-8).

(A) Unstimulated ECV-304 cells cultured in serum-free RPMI-1640 for 48hrs.

(B) ECV-304 cells cultured in RPMI-1640, stimulated with 0.1 ng/ml IL24 for 48hrs.


**GTX00138-pro Image**

SDS-PAGE analysis of GTX00138-pro Human IL24 protein (active).


**GTX00138-pro Image**

WB analysis of GTX00138-pro Human IL24 protein (active).



For full product information, images and publications, please visit our [website](https://www.genetex.com).