

Human HRG protein, His tag

Cat. No. GTX00140-pro

Applications Functional Assay**Species** Human**Package**

10 µg

Applications

Application Note

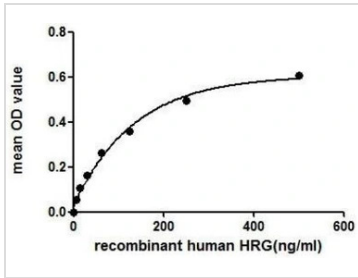
HRG (Histidine-rich glycoprotein) is a plasma glycoprotein which is distinguished by its high content of histidine and proline. HRG binds a number of ligands such as heme, heparin, heparan sulfate, thrombospondin, plasminogen, and divalent metal ions. Thus, a functional binding ELISA assay was constructed to detect the association of rhHRG with heparin. Briefly, Microtiter wells were coated with OVA-conjugated-heparin. rhHRG were diluted serially in 0.01M PBS (pH 7.4). Duplicate samples of 100 µl were then transferred to the coated microtiter wells and incubated for 2h at 37°C. Wells were washed with PBST and incubated for 1h with anti-HRG PAb, then aspirated and washed 3 times. After incubation with HRP labeled secondary antibody, wells were aspirated and washed 3 times. With the addition of substrate Solution, wells were incubated 15-25 minutes at 37°C. Finally, add 50 µl stop solution to the wells and read at 450nm immediately. The binding activity of rhHRG with heparin was in a dose dependent manner.

Observed MW (kDa) 75 kDa.

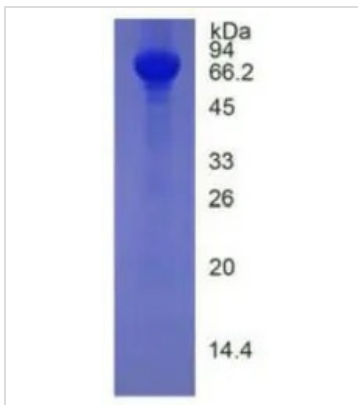
Properties

Form Lyophilized powder**Buffer** Reconstitute with 20mM Tris and 150mM NaCl to 0.1-1.0mg/ml. Do not vortex. Lyophilized from 20mM Tris, 150mM NaCl, 1mM EDTA, 1mM DTT, 0.01% SKL, 5% Trehalose.**Preservative** ProClin 300**Storage** For short-term storage (1-2 weeks), store at 4°C. For long-term storage, store at -20°C or below. After reconstitution, keep as concentrated solution. Avoid freeze-thaw cycles.**Region/Sequence** N-terminal His-Tag; Val19~Lys525 (NP_000403.1)**Expression System** HEK293 cells**Purity** > 97%**Endotoxin** < 1 EU/µg**Conjugation** Unconjugated**Note** For laboratory use only. Not for any clinical, therapeutic, or diagnostic use in humans or animals. Not for animal or human consumption.

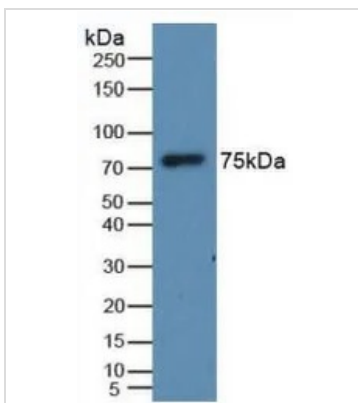
For full product information, images and publications, please visit our [website](#).

DATA IMAGES

GTX00140-pro Functional Assay Image

Functional ELISA analysis of GTX00140-pro Human HRG protein which can bind immobilized Heparin protein.


GTX00140-pro Image

SDS-PAGE analysis of GTX00140-pro Human HRG protein.


GTX00140-pro Image

WB analysis of GTX00140-pro Human HRG protein.



For full product information, images and publications, please visit our [website](https://www.genetex.com).