

# Human IL17 Receptor D protein, His tag

**Cat. No. GTX00142-pro**

**Application** Functional Assay

**Species** Human

**Package**

10 µg

## APPLICATION

### Application Note

IL17RD (interleukin-17 receptor D) is a membrane protein belonging to the IL17R protein family, acting as a component of the interleukin-17 receptor signaling complex. Knowing that the interaction between this protein and IL-17R does not require the interleukin, we have conducted a binding a binding ELISA assay to detect the interaction of recombinant human IL17RD with both recombinant human IL17RA and IL17. Briefly, IL17RD were diluted serially in PBS, with 0.01% BSA (pH 7.4). Duplicate samples of 100 µl were then transferred to IL17RA-coated or IL17-coated microtiter wells and incubated for 2h at 37°C. Wells were washed with PBST and incubated for 1h with anti-IL17RA pAb and anti-IL17 pAb separately, then aspirated and washed 3 times. After incubation with HRP labelled secondary antibody, wells were aspirated and washed 3 times. With the addition of substrate solution , wells were incubated 15-25 minutes at 37°C. Finally, add 50 µl stop solution to the wells and read at 450nm immediately. The binding activity of IL17RD with IL17RA and IL17 was shown in images respectively and this effect was in a dose dependent manner.

**Observed MW** 20 kDa.

## PROPERTIES

**Form** Lyophilized powder

**Buffer** Reconstitute with 20mM Tris and 150mM NaCl to 0.1-1.0mg/ml. Do not vortex. Lyophilized from 20mM Tris, 150mM NaCl, 1mM EDTA, 1mM DTT, 0.01% SKL, 5% Trehalose.

**Preservative** ProClin 300

**Storage** For short-term storage (1-2 weeks), store at 4°C. For long-term storage, store at -20°C or below. After reconstitution, keep as concentrated solution. Avoid freeze-thaw cycles.

**Region/Sequence** N-terminal His-Tag; Thr157~Arg299 (NP\_001305793.1)

**Expression System** E. coli

**Purity** > 90%

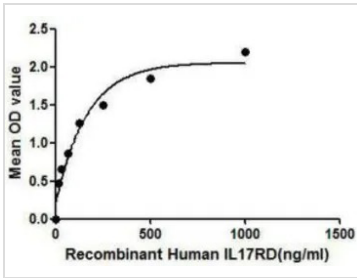
**Endotoxin** < 1 EU/µg

**Conjugation** Unconjugated

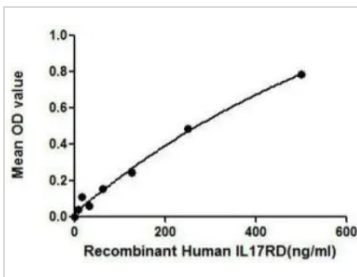
**Note** For laboratory use only. Not for any clinical, therapeutic, or diagnostic use in humans or animals. Not for animal or human consumption.



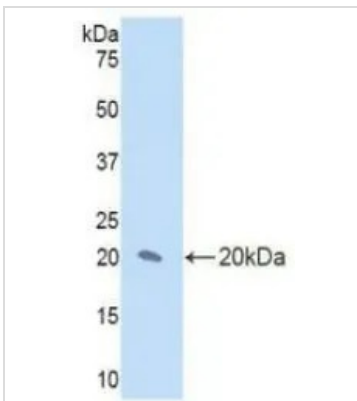
For full product information, images and publications, please visit our [website](https://www.genetex.com).

**DATA IMAGES**

**GTX00142-pro Functional Assay Image**

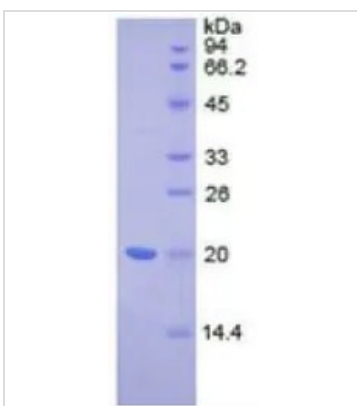
Functional ELISA analysis of GTX00142-pro Human IL17 Receptor D protein which can bind immobilized IL17RA protein.


**GTX00142-pro Functional Assay Image**

Functional ELISA analysis of GTX00142-pro Human IL17 Receptor D protein which can bind immobilized IL17 protein.


**GTX00142-pro Image**

WB analysis of GTX00142-pro Human IL17 Receptor D protein.


**GTX00142-pro Image**

SDS-PAGE analysis of GTX00142-pro Human IL17 Receptor D protein.



For full product information, images and publications, please visit our [website](https://www.genetex.com).