

Human FNDC5 protein, His tag (active)

Cat. No. GTX00150-pro

Application	Functional Assay
Species	Human

Package
10 µg

APPLICATION

Application Note

Fibronectin type III domain-containing protein 5, the precursor of irisin, is a protein that is encoded by the FNDC5 gene. It was reported that FNDC5 significantly decreased cell number, migration and viability through apoptosis in malignant MDA-MB-231 cells. Thus MDA-MB-231 cells were seeded overnight at a density of 5000 cells/well, and treated with or without various concentrations of FNDC5 for 48h, then MDA-MB-231 cells were observed by inverted microscope and cell viability was measured by Cell Counting Kit-8 (CCK-8). Briefly, 10 µl of CCK-8 solution was added to each well of the plate, then measure the absorbance at 450nm using a microplate reader after incubating the plate for 1-4 hours at 37°C. Cell apoptosis of MDA-MB-231 cells after incubation with FNDC5 for 48h observed by inverted microscope.

Observed MW 27 kDa.

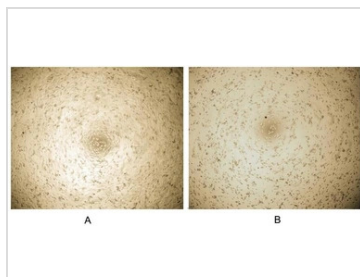
PROPERTIES

Form	Lyophilized powder
Buffer	Reconstitute with 10mM PBS (pH7.4) to 0.1-1.0mg/ml. Do not vortex. Lyophilized from PBS (pH7.6), 5% Trehalose.
Preservative	No preservative
Storage	For short-term storage (1-2 weeks), store at 4°C. For long-term storage, store at -20°C or below. After reconstitution, keep as concentrated solution. Avoid freeze-thaw cycles.
Region/Sequence	N-terminal His-Tag; Asp32~Glu143 (NP_001165411.2)
Expression System	HEK293 cells
Purity	> 97%
Endotoxin	< 1 EU/µg
Conjugation	Unconjugated
Note	For laboratory use only. Not for any clinical, therapeutic, or diagnostic use in humans or animals. Not for animal or human consumption.



For full product information, images and publications, please visit our [website](#).

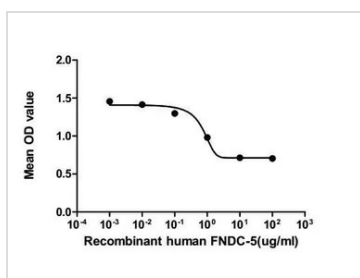
Date 2024 / 04 / 23 Page 1 of 2

DATA IMAGES

GTX00150-pro Functional Assay Image

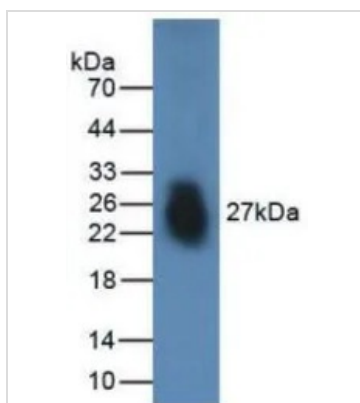
Cell apoptosis effect of GTX00150-pro Human FNDC5 protein (active).

(A) Unstimulated MDA-MB-231 cells cultured in DMEM for 48hrs.

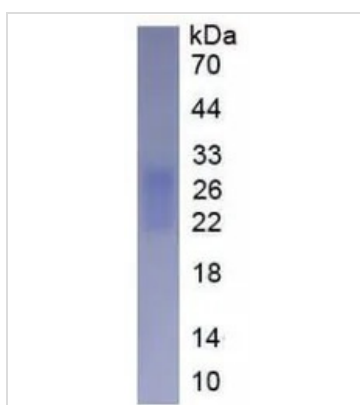
(B) MDA-MB-231 cells cultured in DMEM, stimulated with 4 nM FNDC5 for 48hrs.


GTX00150-pro Functional Assay Image

The dose effect curve of GTX00150-pro Human FNDC5 protein (active) on MDA-MB-231 cells. After incubation of Human FNDC5 protein (active) for 48 hrs. Cell viability was measured by Cell Counting Kit-8 (CCK-8).


GTX00150-pro Image

WB analysis of GTX00150-pro Human FNDC5 protein (active).


GTX00150-pro Image

SDS-PAGE analysis of GTX00150-pro Human FNDC5 protein (active).



For full product information, images and publications, please visit our [website](http://www.genetex.com).