

Human JAK2 protein, His tag

Cat. No. GTX00152-pro

Application	Functional Assay
Species	Human

Package
10 µg

APPLICATION

Application Note

JAK2 (Tyrosine-protein kinase JAK2) is a tyrosine kinase involved in various processes such as cell growth, development, differentiation or histone modifications. JAK2 is considered to associate with some type I receptors, including EPOR (Erythropoietin receptor), therefore participates in cellular signal transduction. Thus a binding ELISA assay was conducted to detect the interaction of recombinant human JAK2 and recombinant human EPOR. Briefly, JAK2 were diluted serially in PBS, with 0.01% BSA (pH 7.4). Duplicate samples of 100 µl JAK2 were then transferred to EPOR-coated microtiter wells and incubated for 2h at 37°C. Wells were washed with PBST and incubated for 1h with anti-JAK2 pAb, then aspirated and washed 3 times. After incubation with HRP labelled secondary antibody, wells were aspirated and washed 3 times. With the addition of substrate solution, wells were incubated 15-25 minutes at 37°C. Finally, add 50 µl stop solution to the wells and read at 450nm immediately. The binding activity of JAK2 and EPOR was in a dose dependent manner.

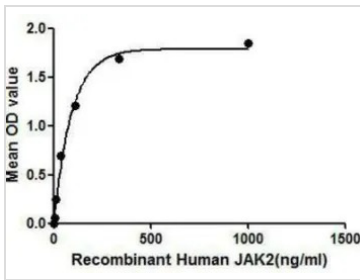
Observed MW 35 kDa.

PROPERTIES

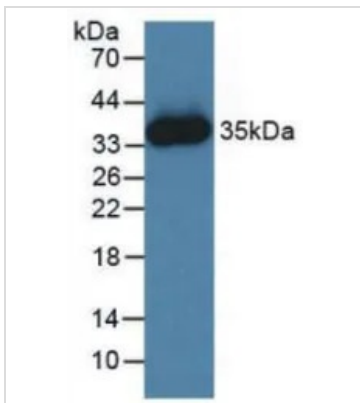
Form	Lyophilized powder
Buffer	Reconstitute with 20mM Tris and 150mM NaCl to 0.1-1.0mg/ml. Do not vortex. Lyophilized from 20mM Tris, 150mM NaCl, 1mM EDTA, 1mM DTT, 0.01% SKL, 5% Trehalose.
Preservative	ProClin 300
Storage	For short-term storage (1-2 weeks), store at 4°C. For long-term storage, store at -20°C or below. After reconstitution, keep as concentrated solution. Avoid freeze-thaw cycles.
Region/Sequence	N-terminal His-Tag; Asn508~Ala800 (NP_001309123.1)
Expression System	E. coli
Purity	> 90%
Endotoxin	< 1 EU/µg
Conjugation	Unconjugated
Note	For laboratory use only. Not for any clinical, therapeutic, or diagnostic use in humans or animals. Not for animal or human consumption.



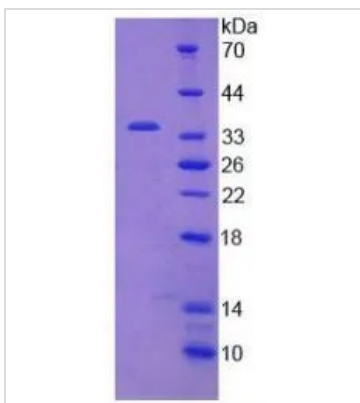
For full product information, images and publications, please visit our [website](#).

DATA IMAGES

GTX00152-pro Functional Assay Image

Functional ELISA analysis of GTX00152-pro Human JAK2 protein which can bind immobilized EPOR protein.


GTX00152-pro Image

WB analysis of GTX00152-pro Human JAK2 protein.


GTX00152-pro Image

SDS-PAGE analysis of GTX00152-pro Human JAK2 protein.



For full product information, images and publications, please visit our [website](https://www.genetex.com).