

Human APRT protein, His tag

Cat. No. GTX00157-pro

Application	Functional Assay
Species	Human

Package
10 µg

APPLICATION

Application Note

Adenine Phosphoribosyltransferase (APRT) is an enzyme involved in the purine nucleotide salvage pathway. It functions as a catalyst in the reaction between adenine and phosphoribosyl pyrophosphate (PRPP) to form AMP. Besides, Vascular Cell Adhesion Molecule 1 (VCAM1) has been identified as an interactor of APRT, thus a binding ELISA assay was conducted to detect the interaction of recombinant human APRT and recombinant human VCAM1. Briefly, APRT were diluted serially in PBS, with 0.01% BSA (pH 7.4). Duplicate samples of 100 µl were then transferred to VCAM1-coated microtiter wells and incubated for 2h at 37°C. Wells were washed with PBST and incubated for 1h with anti-APRT pAb, then aspirated and washed 3 times. After incubation with HRP labelled secondary antibody, wells were aspirated and washed 3 times. With the addition of substrate solution, wells were incubated 15-25 minutes at 37°C. Finally, add 50 µl stop solution to the wells and read at 450nm immediately. The binding activity of of APRT and VCAM1 was in a dose dependent manner.

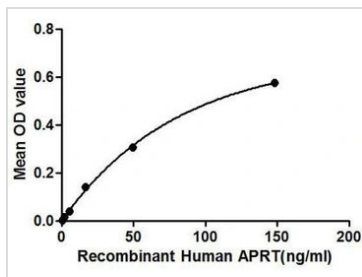
Observed MW 23 kDa.

PROPERTIES

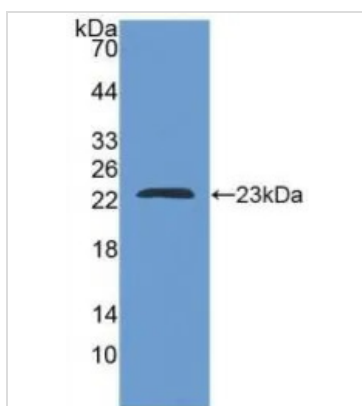
Form	Lyophilized powder
Buffer	Reconstitute with 20mM Tris and 150mM NaCl to 0.1-1.0mg/ml. Do not vortex. Lyophilized from 20mM Tris, 150mM NaCl, 1mM EDTA, 1mM DTT, 0.01% SKL, 5% Trehalose.
Preservative	ProClin 300
Storage	For short-term storage (1-2 weeks), store at 4°C. For long-term storage, store at -20°C or below. After reconstitution, keep as concentrated solution. Avoid freeze-thaw cycles.
Region/Sequence	Full length protein, N-terminal His-Tag; Met1~Glu180 (NP_000476.1)
Expression System	E. coli
Purity	> 97%
Endotoxin	< 1 EU/µg
Conjugation	Unconjugated
Note	For laboratory use only. Not for any clinical, therapeutic, or diagnostic use in humans or animals. Not for animal or human consumption.



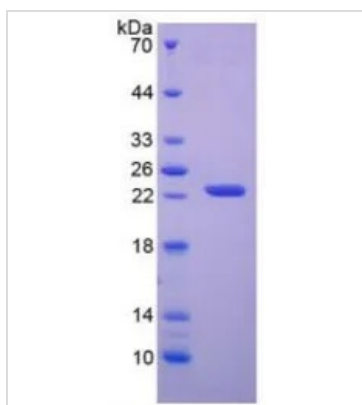
For full product information, images and publications, please visit our [website](#).

DATA IMAGES

GTX00157-pro Functional Assay Image

Functional ELISA analysis of GTX00157-pro Human APRT protein which can bind immobilized VCAM1 protein.


GTX00157-pro Image

WB analysis of GTX00157-pro Human APRT protein.


GTX00157-pro Image

SDS-PAGE analysis of GTX00157-pro Human APRT protein.



For full product information, images and publications, please visit our [website](https://www.genetex.com).