

Human CYP1A2 protein, His and GST tag

Cat. No. GTX00158-pro

Application Functional Assay**Species** Human**Package**

10 µg

APPLICATION

Application Note

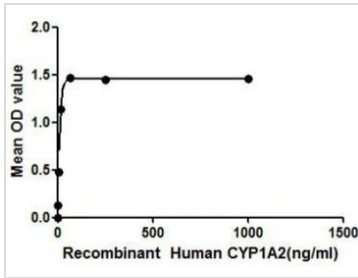
CYP1A2 (Cytochrome P450 1A2) belongs to the group of proteins which contains heme as a cofactor. CYP1A2 oxidizes a variety of structurally unrelated compounds, including steroids, fatty acids, and xenobiotics. Besides, ASAH1 (Acid ceramidase) has been identified as an interactor of CYP1A2 through affinity capture-MS. Thus a binding ELISA assay was conducted to detect the interaction of recombinant human CYP1A2 and recombinant human ASAH1. Briefly, CYP1A2 were diluted serially in PBS, with 0.01% BSA (pH 7.4). Duplicate samples of 100 µl were then transferred to ASAH1-coated microtiter wells and incubated for 2h at 37°C. Wells were washed with PBST and incubated for 1h with anti-CYP1A2 mAb, then aspirated and washed 3 times. After incubation with HRP labelled secondary antibody, wells were aspirated and washed 3 times. With the addition of substrate solution, wells were incubated 15-25 minutes at 37°C. Finally, add 50 µl stop solution to the wells and read at 450nm immediately. The binding activity of CYP1A2 and ASAH1 was in a dose dependent manner.

Observed MW 55 kDa.

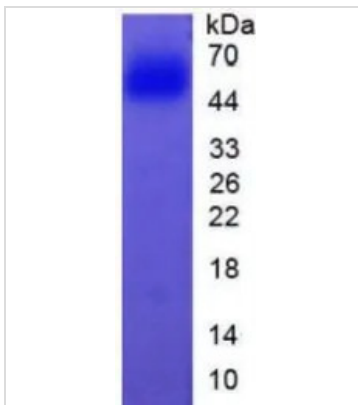
PROPERTIES

Form Lyophilized powder**Buffer** Reconstitute with 20mM Tris and 150mM NaCl to 0.1-1.0mg/ml. Do not vortex. Lyophilized from 20mM Tris, 150mM NaCl, 1mM EDTA, 1mM DTT, 0.01% SKL, 5% Trehalose.**Preservative** ProClin 300**Storage** For short-term storage (1-2 weeks), store at 4°C. For long-term storage, store at -20°C or below. After reconstitution, keep as concentrated solution. Avoid freeze-thaw cycles.**Region/Sequence** N-terminal His and GST-Tag; Ala2~Ser231 (NP_000752.2)**Expression System** E. coli**Purity** > 95%**Endotoxin** < 1 EU/µg**Conjugation** Unconjugated**Note** For laboratory use only. Not for any clinical, therapeutic, or diagnostic use in humans or animals. Not for animal or human consumption.

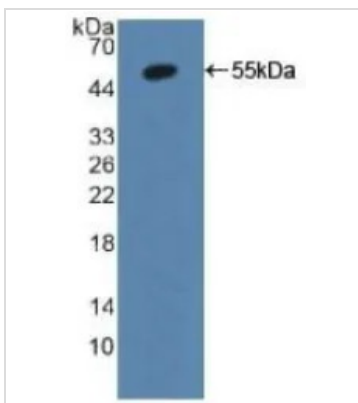
For full product information, images and publications, please visit our [website](#).

DATA IMAGES

GTx00158-pro Functional Assay Image

Functional ELISA analysis of GTx00158-pro Human CYP1A2 protein which can bind immobilized ASAHI protein.


GTx00158-pro Image

SDS-PAGE analysis of GTx00158-pro Human CYP1A2 protein.


GTx00158-pro Image

WB analysis of GTx00158-pro Human CYP1A2 protein.



For full product information, images and publications, please visit our [website](https://www.genetex.com).