

## Human Arylsulfatase F protein, His tag

Cat. No. GTX00162-pro

**Applications** Functional Assay**Species** Human**Package**

10 µg

## Applications

## Application Note

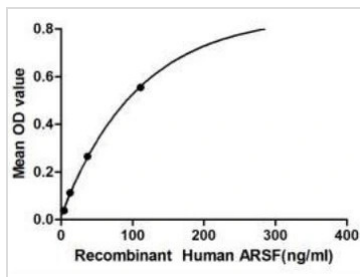
ARSF (Arylsulfatase F) is a member of the sulfatase gene family, and more specifically, the arylsulfatase subfamily. Sulfatases are essential for the correct composition of bone and cartilage matrix. The activity of this protein, unlike that of arylsulfatase E, is not inhibited by warfarin. Besides, EP300 (E1A binding protein p300) has been identified as an interactor of ARSF, thus a binding ELISA assay was conducted to detect the interaction of recombinant human ARSF and recombinant human EP300. Briefly, ARSF were diluted serially in PBS, with 0.01% BSA (pH 7.4). Duplicate samples of 100 µl were then transferred to EP300-coated microtiter wells and incubated for 2h at 37°C. Wells were washed with PBST and incubated for 1h with anti-ARSF pAb, then aspirated and washed 3 times. After incubation with HRP labelled secondary antibody, wells were aspirated and washed 3 times. With the addition of substrate solution, wells were incubated 15-25 minutes at 37°C. Finally, add 50 µl stop solution to the wells and read at 450nm immediately. The binding activity of ARSF and EP300 was in a dose dependent manner.

**Observed MW (kDa)** 35 kDa.

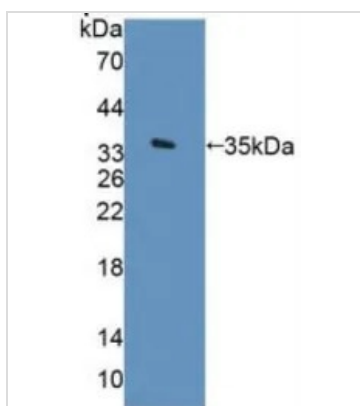
## Properties

**Form** Lyophilized powder**Buffer** Reconstitute with 20mM Tris and 150mM NaCl to 0.1-1.0mg/ml. Do not vortex. Lyophilized from 20mM Tris, 150mM NaCl, 1mM EDTA, 1mM DTT, 0.01% SKL, 5% Trehalose.**Preservative** ProClin 300**Storage** For short-term storage (1-2 weeks), store at 4°C. For long-term storage, store at -20°C or below. After reconstitution, keep as concentrated solution. Avoid freeze-thaw cycles.**Region/Sequence** N-terminal His-Tag; His23~Asp300 (NP\_001188467.1)**Expression System** HEK293 cells**Purity** > 97%**Endotoxin** < 1 EU/µg**Conjugation** Unconjugated**Note** For laboratory use only. Not for any clinical, therapeutic, or diagnostic use in humans or animals. Not for animal or human consumption.

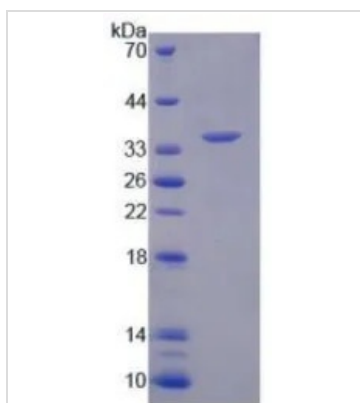
For full product information, images and publications, please visit our [website](#).

**DATA IMAGES**

**GTx00162-pro Functional Assay Image**

Functional ELISA analysis of GTx00162-pro Human Arylsulfatase F protein which can bind immobilized EP300 protein.


**GTx00162-pro Image**

WB analysis of GTx00162-pro Human Arylsulfatase F protein.


**GTx00162-pro Image**

SDS-PAGE analysis of GTx00162-pro Human Arylsulfatase F protein.



For full product information, images and publications, please visit our [website](https://www.genetex.com).