

Human Fibronectin protein, His tag

Cat. No. GTX00166-pro

Applications Functional Assay**Species** Human**Package**

10 µg

Applications

Application Note

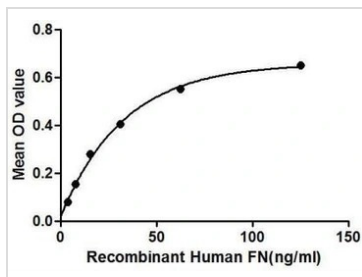
Fibronectin (FN) is a high-molecular weight (~440kDa) glycoprotein of the extracellular matrix that binds to membrane-spanning receptor proteins called integrins. Fibronectins bind cell surfaces and various compounds including collagen, fibrin, heparin, DNA, and actin. Fibronectin has numerous functions. For example, it involved in cell adhesion, cell motility, opsonization, wound healing, maintenance of cell shape, and so on. Besides, Connective Tissue Growth Factor (CTGF) has been identified as an interactor of FN, thus a binding ELISA assay was conducted to detect the interaction of recombinant human FN and recombinant human CTGF. Briefly, FN were diluted serially in PBS, with 0.01% BSA (pH 7.4). Duplicate samples of 100 µl were then transferred to CTGF-coated microtiter wells and incubated for 2h at 37°C. Wells were washed with PBST and incubated for 1h with anti-FN pAb, then aspirated and washed 3 times. After incubation with HRP labelled secondary antibody, wells were aspirated and washed 3 times. With the addition of substrate solution, wells were incubated 15-25 minutes at 37°C. Finally, add 50 µl stop solution to the wells and read at 450nm immediately. The binding activity of of FN and CTGF was in a dose dependent manner.

Observed MW (kDa) 26 kDa.

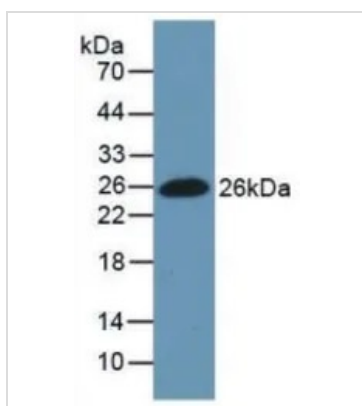
Properties

Form Lyophilized powder**Buffer** Reconstitute with 20mM Tris and 150mM NaCl to 0.1-1.0mg/ml. Do not vortex. Lyophilized from 20mM Tris, 150mM NaCl, 1mM EDTA, 1mM DTT, 0.01% SKL, 5% Trehalose.**Preservative** ProClin 300**Storage** For short-term storage (1-2 weeks), store at 4°C. For long-term storage, store at -20°C or below. After reconstitution, keep as concentrated solution. Avoid freeze-thaw cycles.**Region/Sequence** N-terminal His-Tag; Ser1998~Ser2106 (NP_001293058.1)**Expression System** E. coli**Purity** > 90%**Endotoxin** < 1 EU/µg**Conjugation** Unconjugated**Note** For laboratory use only. Not for any clinical, therapeutic, or diagnostic use in humans or animals. Not for animal or human consumption.

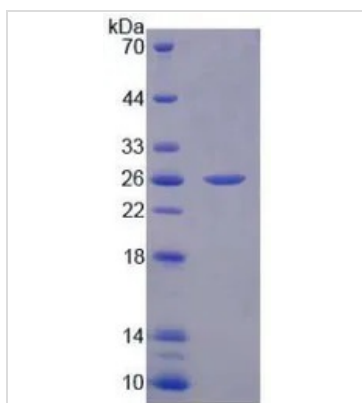
For full product information, images and publications, please visit our [website](#).

DATA IMAGES

GTx00166-pro Functional Assay Image

Functional ELISA analysis of GTx00166-pro Human Fibronectin protein which can bind immobilized CTGF protein.


GTx00166-pro Image

WB analysis of GTx00166-pro Human Fibronectin protein.


GTx00166-pro Image

SDS-PAGE analysis of GTx00166-pro Human Fibronectin protein.



For full product information, images and publications, please visit our [website](https://www.genetex.com).